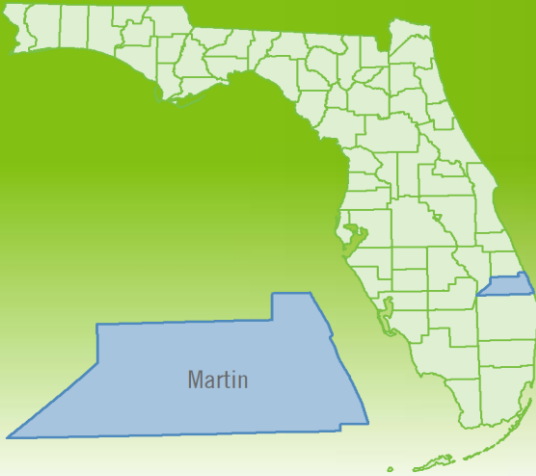


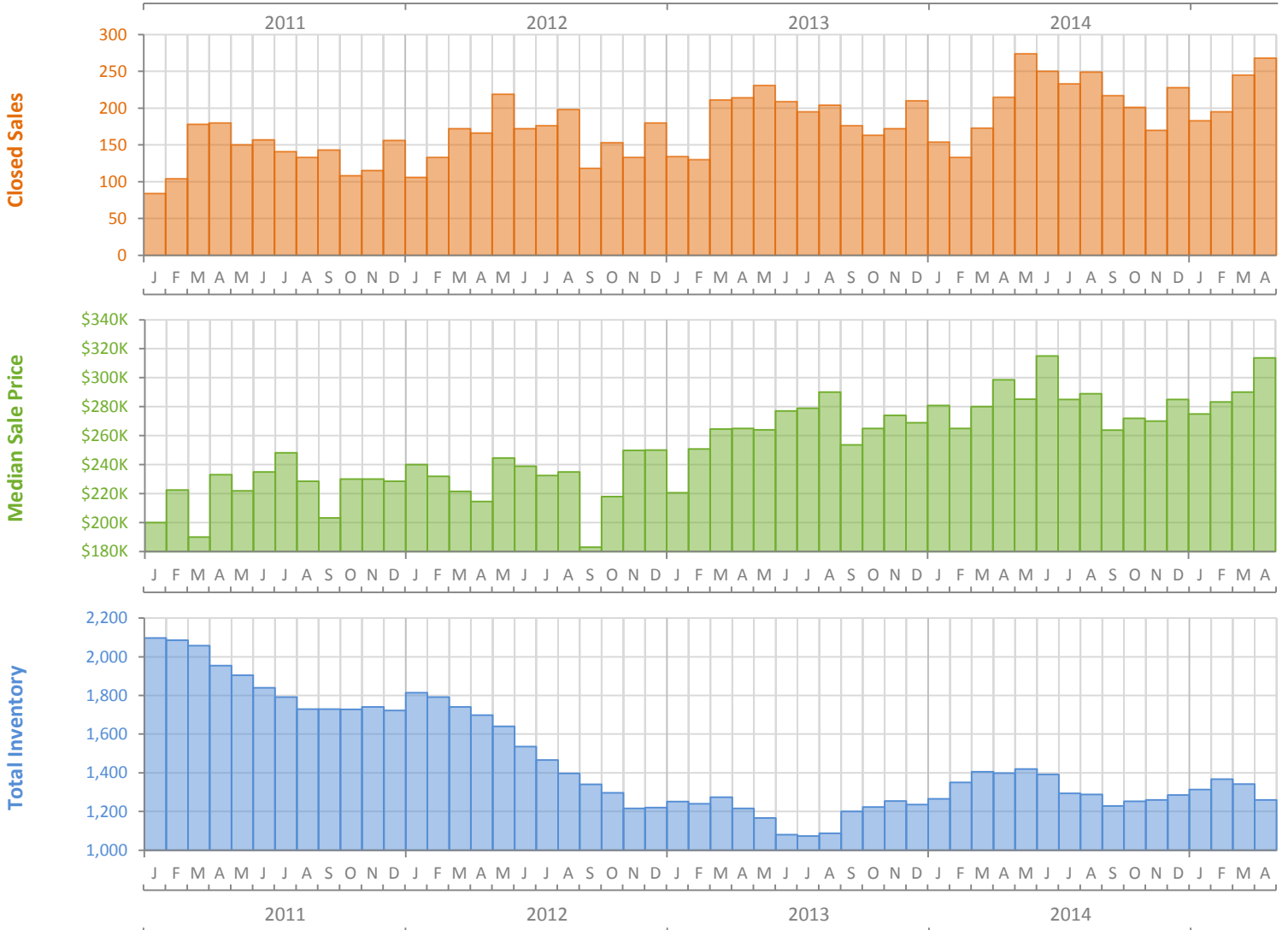
# Monthly Market Summary - April 2015

## Single Family Homes

### Martin County



	April 2015	April 2014	Percent Change Year-over-Year
Closed Sales	268	215	24.7%
Cash Sales	108	98	10.2%
New Pending Sales	331	269	23.0%
New Listings	346	329	5.2%
Median Sale Price	\$313,750	\$298,495	5.1%
Average Sale Price	\$392,447	\$341,471	14.9%
Median Days on Market	49	64	-23.4%
Avg. Percent of Original List Price Received	92.5%	92.9%	-0.4%
Pending Inventory	550	479	14.8%
Inventory (Active Listings)	1,260	1,398	-9.9%
Months Supply of Inventory	5.6	7.5	-25.8%

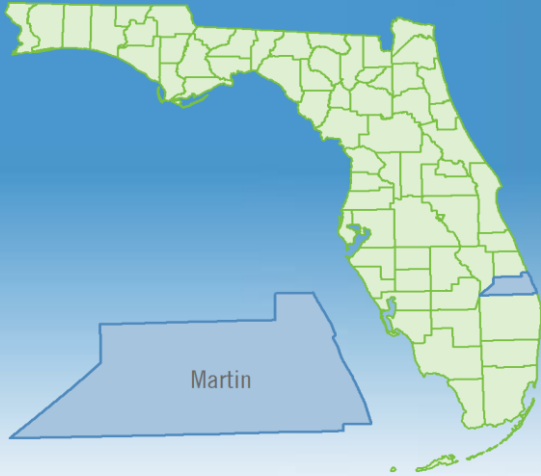


Produced by Florida REALTORS® with data provided by Florida's multiple listing services. Statistics for each month compiled from MLS feeds on the 15th day of the following month. Data released on Thursday, May 21, 2015. Next data release is Monday, June 22, 2015.

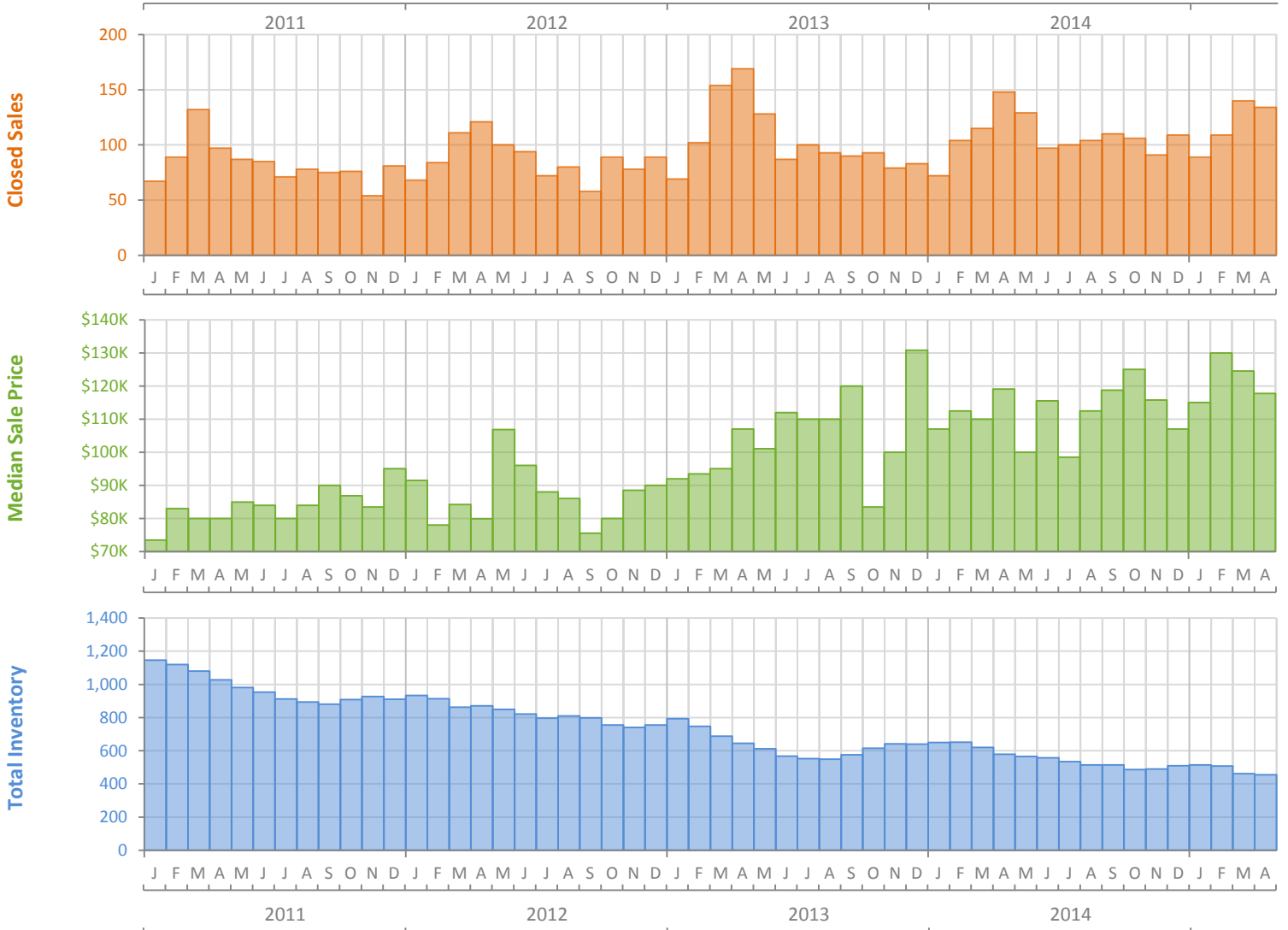
# Monthly Market Summary - April 2015

## Townhouses and Condos

### Martin County



	April 2015	April 2014	Percent Change Year-over-Year
Closed Sales	134	148	-9.5%
Cash Sales	91	98	-7.1%
New Pending Sales	126	156	-19.2%
New Listings	150	161	-6.8%
Median Sale Price	\$117,750	\$119,100	-1.1%
Average Sale Price	\$143,619	\$151,175	-5.0%
Median Days on Market	44	57	-22.8%
Avg. Percent of Original List Price Received	91.9%	90.9%	1.1%
Pending Inventory	220	209	5.3%
Inventory (Active Listings)	455	579	-21.4%
Months Supply of Inventory	4.1	5.8	-28.9%



Produced by Florida REALTORS® with data provided by Florida's multiple listing services. Statistics for each month compiled from MLS feeds on the 15th day of the following month. Data released on Thursday, May 21, 2015. Next data release is Monday, June 22, 2015.