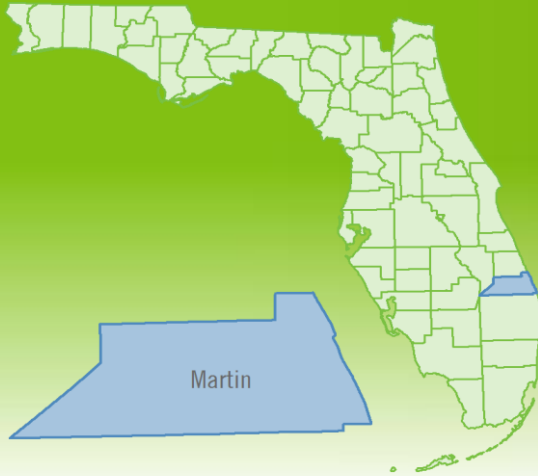


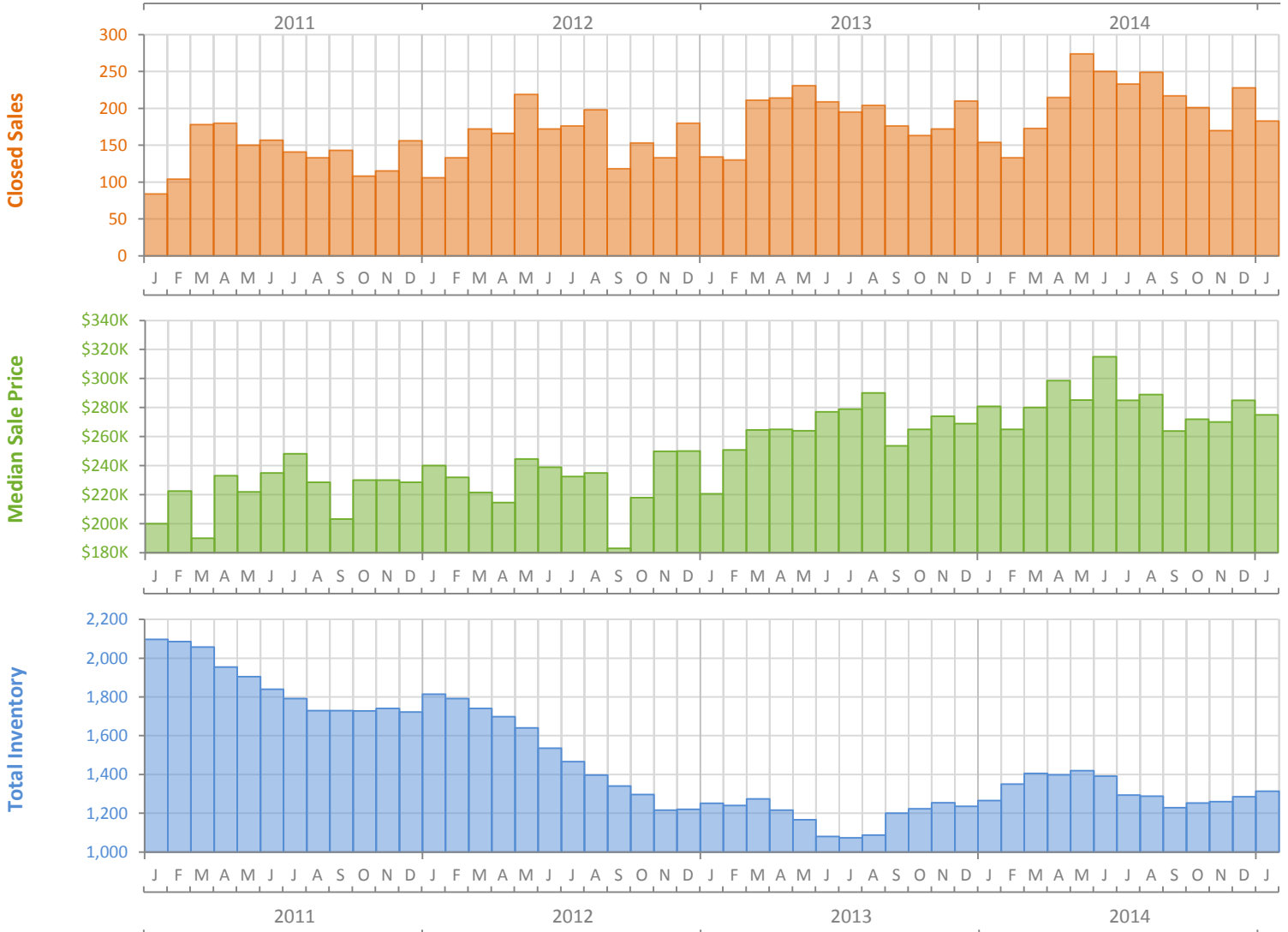
Monthly Market Summary - January 2015

Single Family Homes

Martin County



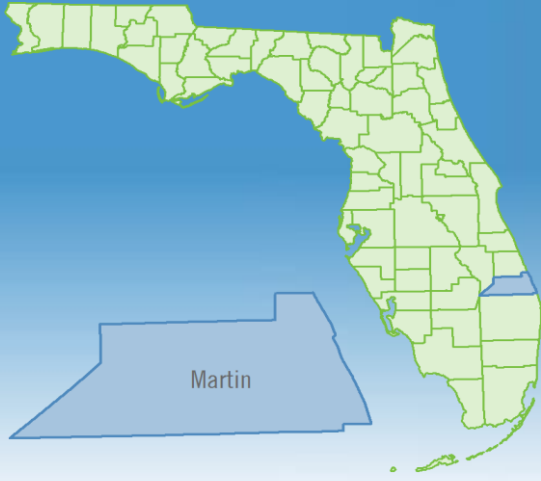
	January 2015	January 2014	Percent Change Year-over-Year
Closed Sales	183	154	18.8%
Cash Sales	86	77	11.7%
New Pending Sales	293	203	44.3%
New Listings	401	376	6.6%
Median Sale Price	\$275,000	\$280,885	-2.1%
Average Sale Price	\$512,457	\$391,096	31.0%
Median Days on Market	59	59	0.0%
Avg. Percent of Original List Price Received	91.4%	90.8%	0.7%
Pending Inventory	407	341	19.4%
Inventory (Active Listings)	1,313	1,266	3.7%
Months Supply of Inventory	6.2	6.7	-6.8%



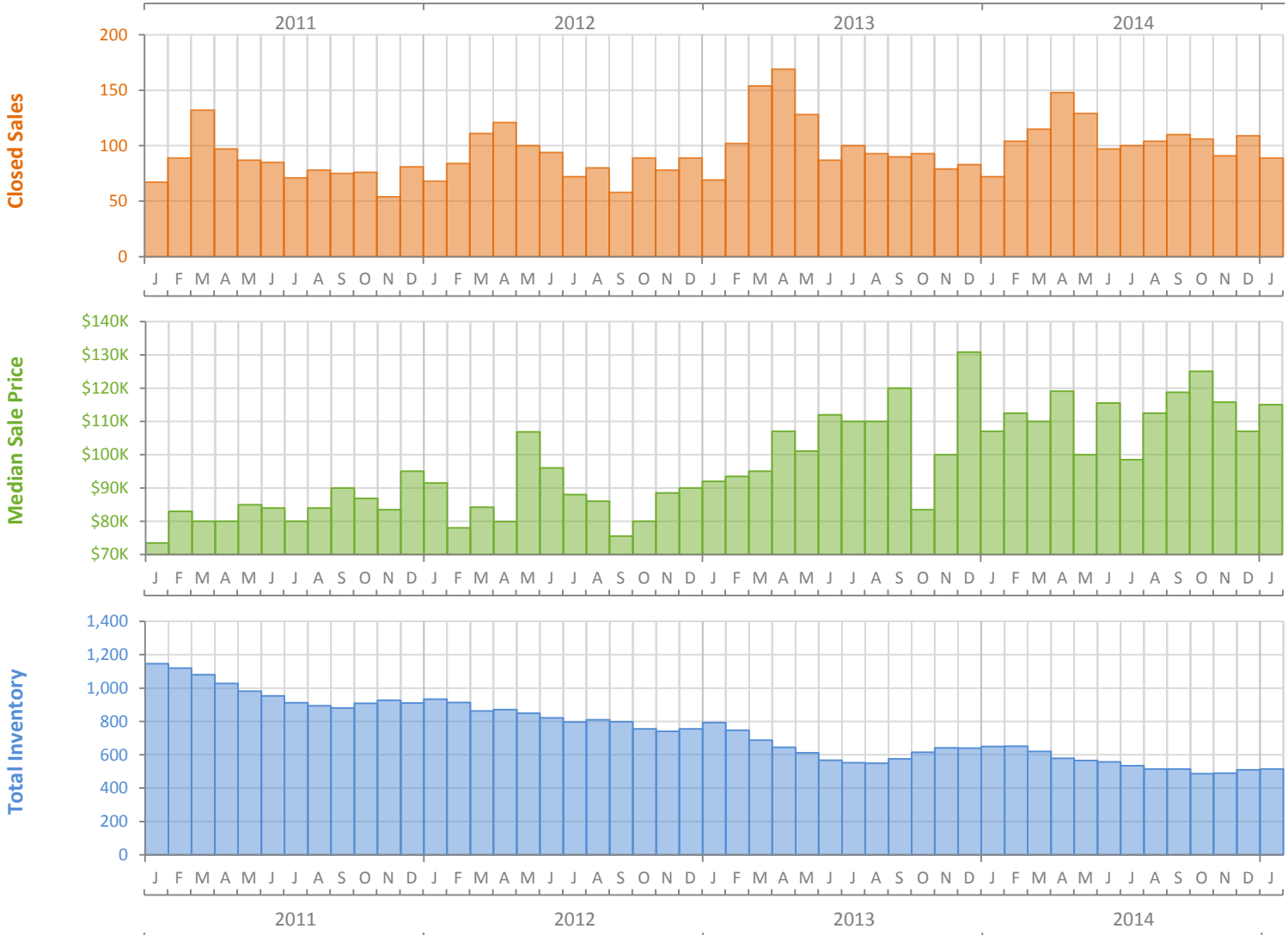
Monthly Market Summary - January 2015

Townhouses and Condos

Martin County



	January 2015	January 2014	Percent Change Year-over-Year
Closed Sales	89	72	23.6%
Cash Sales	62	52	19.2%
New Pending Sales	150	126	19.0%
New Listings	182	195	-6.7%
Median Sale Price	\$115,000	\$107,000	7.5%
Average Sale Price	\$138,607	\$141,773	-2.2%
Median Days on Market	56	54	3.7%
Avg. Percent of Original List Price Received	91.2%	89.7%	1.7%
Pending Inventory	195	174	12.1%
Inventory (Active Listings)	514	650	-20.9%
Months Supply of Inventory	4.7	6.2	-24.1%



Produced by Florida REALTORS® with data provided by Florida's multiple listing services. Statistics for each month compiled from MLS feeds on the 15th day of the following month. Data released on Monday, February 23, 2015. Next data release is Monday, March 23, 2015.