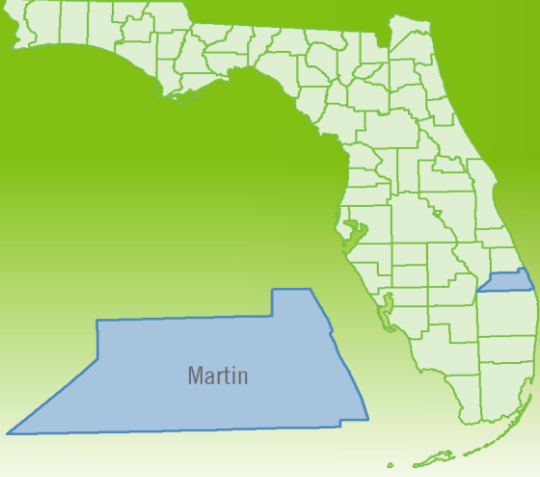


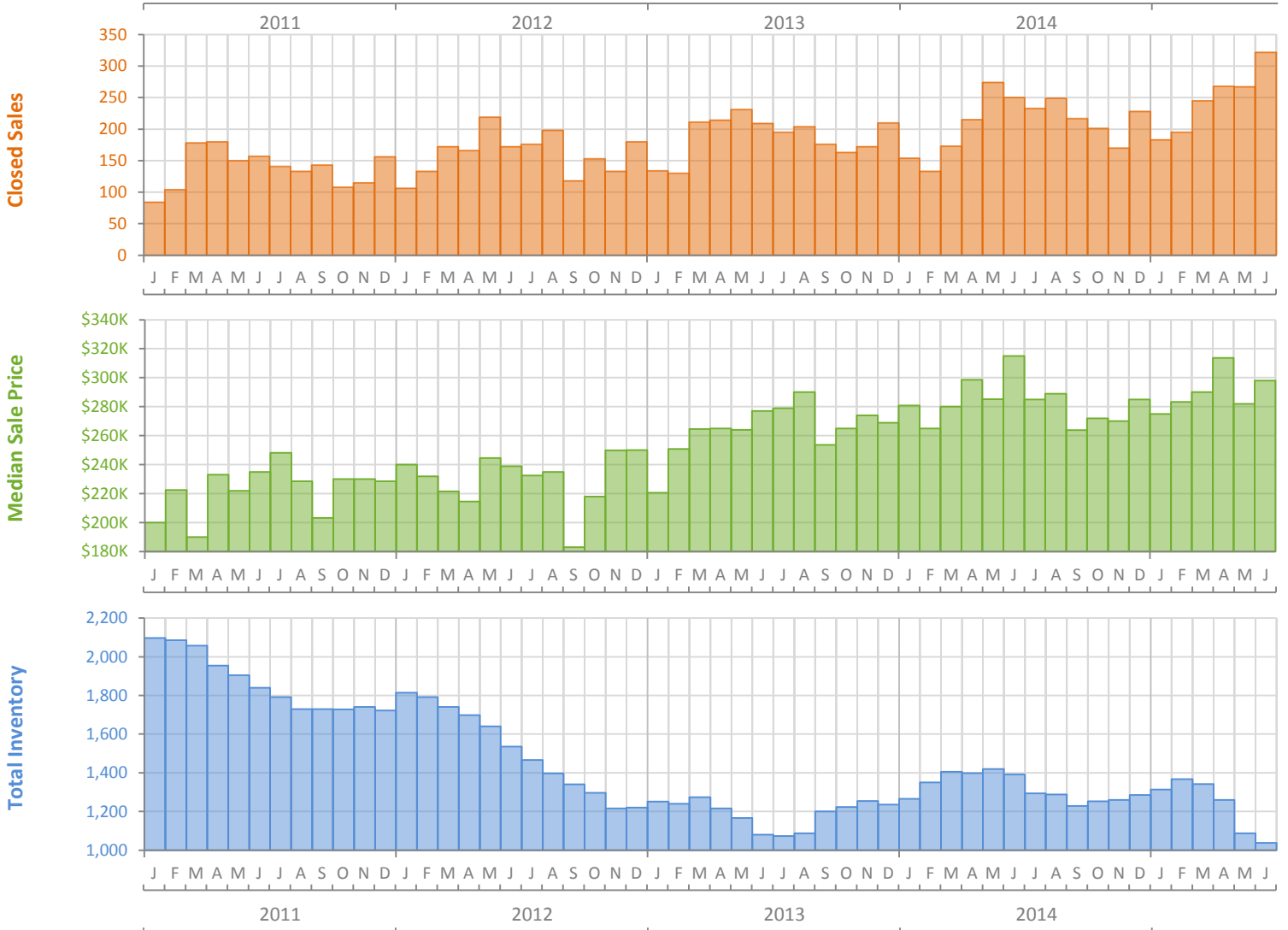
Monthly Market Summary - June 2015

Single Family Homes

Martin County



	June 2015	June 2014	Percent Change Year-over-Year
Closed Sales	322	250	28.8%
Cash Sales	102	103	-1.0%
New Pending Sales	286	280	2.1%
New Listings	322	330	-2.4%
Median Sale Price	\$298,000	\$315,000	-5.4%
Average Sale Price	\$460,188	\$457,788	0.5%
Median Days on Market	50	61	-18.0%
Avg. Percent of Original List Price Received	93.0%	91.8%	1.3%
Pending Inventory	479	426	12.4%
Inventory (Active Listings)	1,038	1,391	-25.4%
Months Supply of Inventory	4.5	7.2	-37.7%

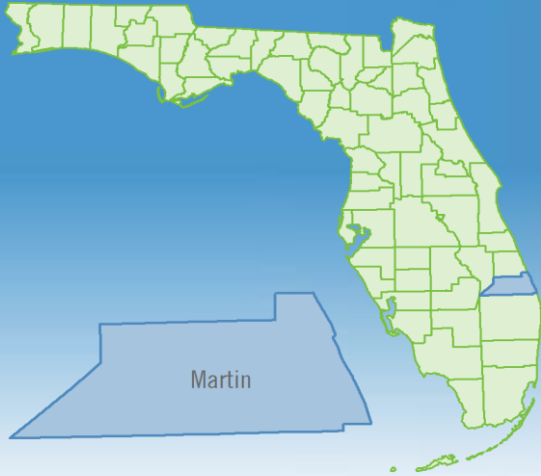


Produced by Florida REALTORS® with data provided by Florida's multiple listing services. Statistics for each month compiled from MLS feeds on the 15th day of the following month. Data released on Wednesday, July 22, 2015. Next data release is Thursday, August 20, 2015.

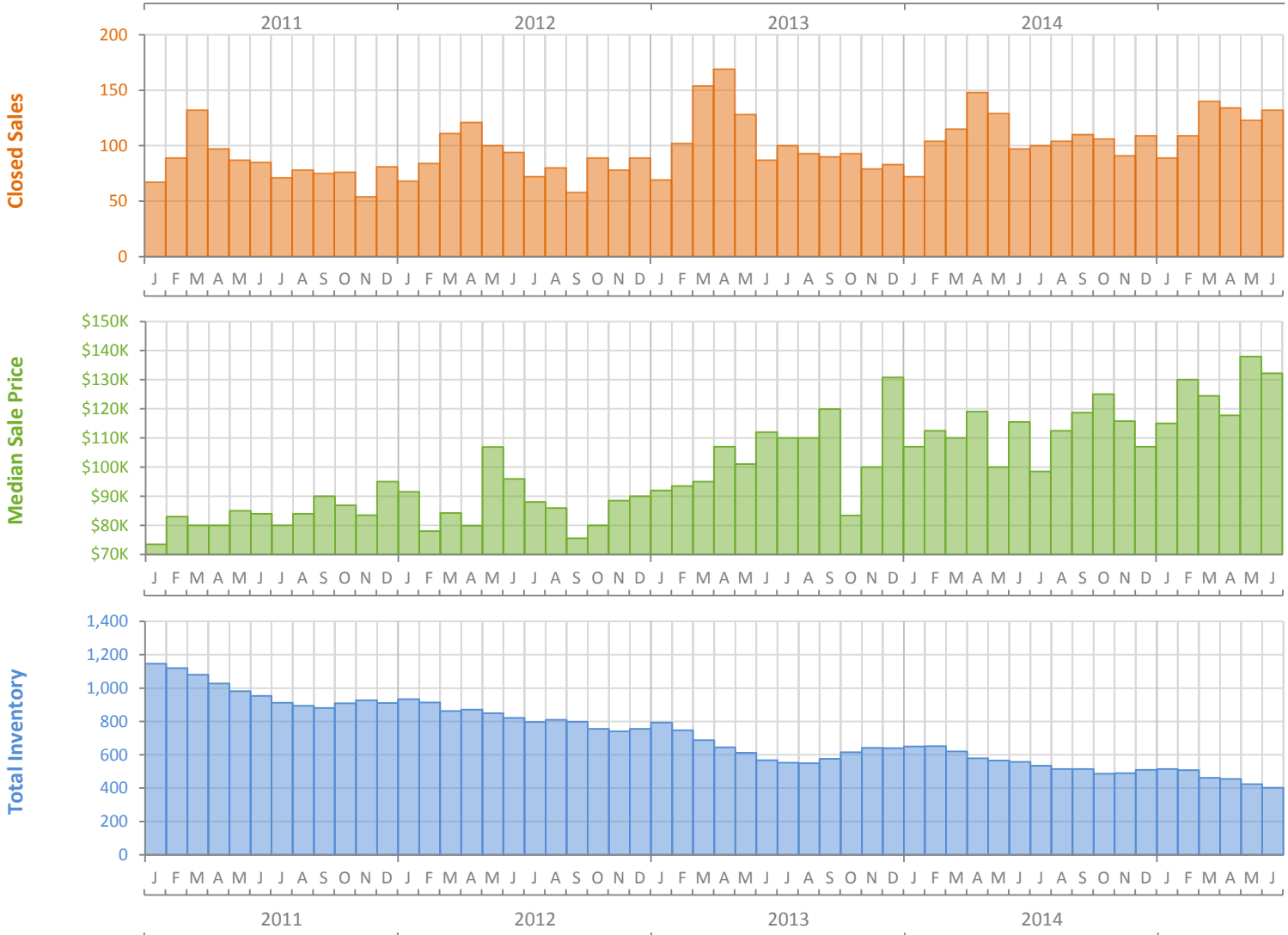
Monthly Market Summary - June 2015

Townhouses and Condos

Martin County



	June 2015	June 2014	Percent Change Year-over-Year
Closed Sales	132	97	36.1%
Cash Sales	87	66	31.8%
New Pending Sales	94	104	-9.6%
New Listings	109	132	-17.4%
Median Sale Price	\$132,238	\$115,500	14.5%
Average Sale Price	\$173,968	\$150,281	15.8%
Median Days on Market	49	73	-32.9%
Avg. Percent of Original List Price Received	92.7%	90.0%	3.0%
Pending Inventory	147	157	-6.4%
Inventory (Active Listings)	402	558	-28.0%
Months Supply of Inventory	3.6	5.6	-35.7%



Produced by Florida REALTORS® with data provided by Florida's multiple listing services. Statistics for each month compiled from MLS feeds on the 15th day of the following month. Data released on Wednesday, July 22, 2015. Next data release is Thursday, August 20, 2015.