

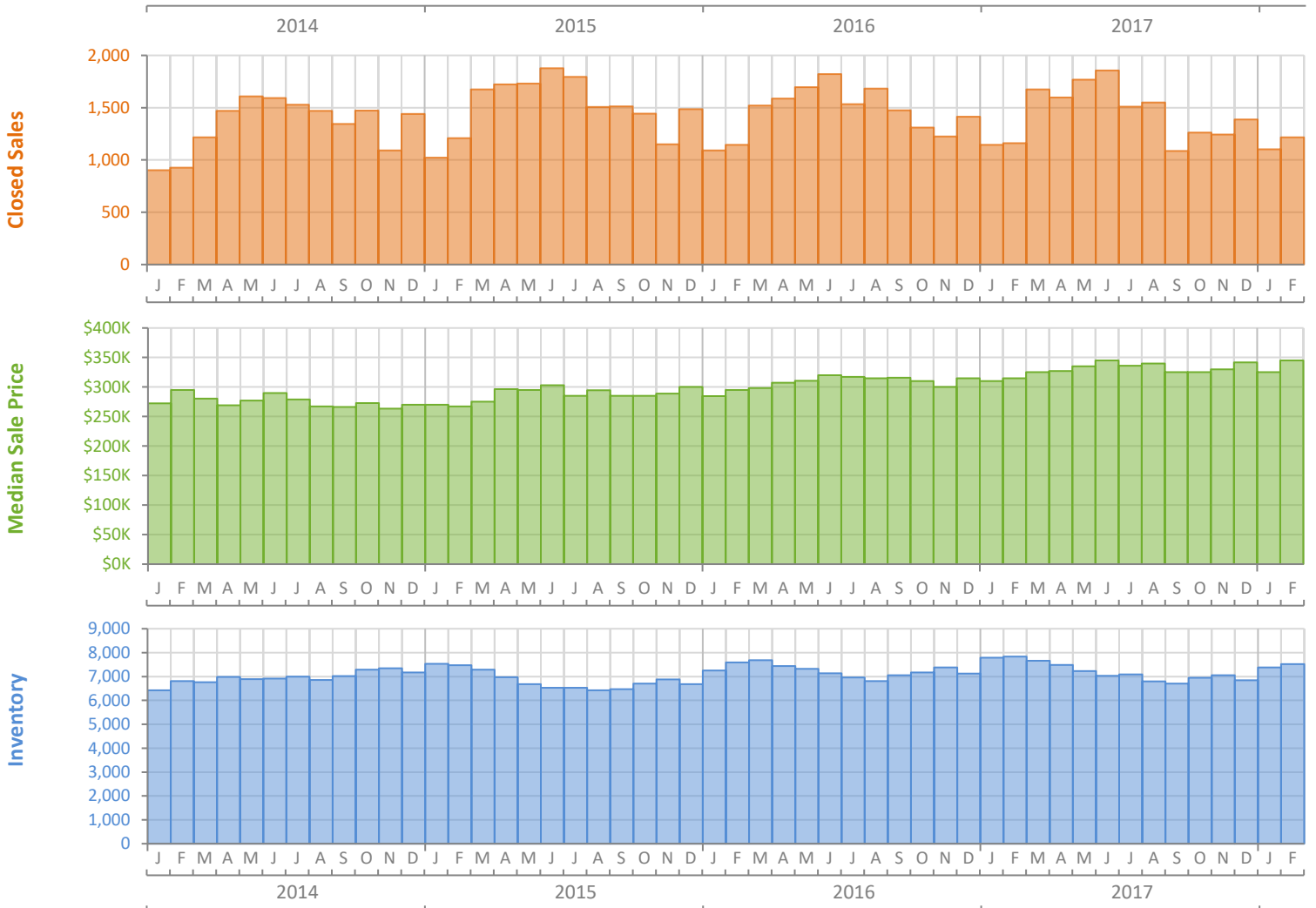
Monthly Market Summary - February 2018

Single Family Homes

Palm Beach County



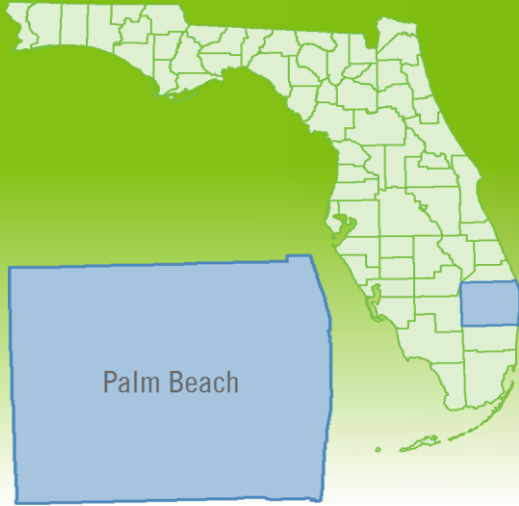
| | February 2018 | February 2017 | Percent Change Year-over-Year |
|--|-----------------|-----------------|-------------------------------|
| Closed Sales | 1,216 | 1,160 | 4.8% |
| Paid in Cash | 464 | 478 | -2.9% |
| Median Sale Price | \$345,000 | \$315,000 | 9.5% |
| Average Sale Price | \$594,330 | \$576,788 | 3.0% |
| Dollar Volume | \$722.7 Million | \$669.1 Million | 8.0% |
| Med. Pct. of Orig. List Price Received | 95.0% | 94.5% | 0.5% |
| Median Time to Contract | 54 Days | 64 Days | -15.6% |
| Median Time to Sale | 95 Days | 106 Days | -10.4% |
| New Pending Sales | 1,785 | 1,836 | -2.8% |
| New Listings | 2,232 | 2,168 | 3.0% |
| Pending Inventory | 2,989 | 3,090 | -3.3% |
| Inventory (Active Listings) | 7,522 | 7,839 | -4.0% |
| Months Supply of Inventory | 5.2 | 5.4 | -3.7% |



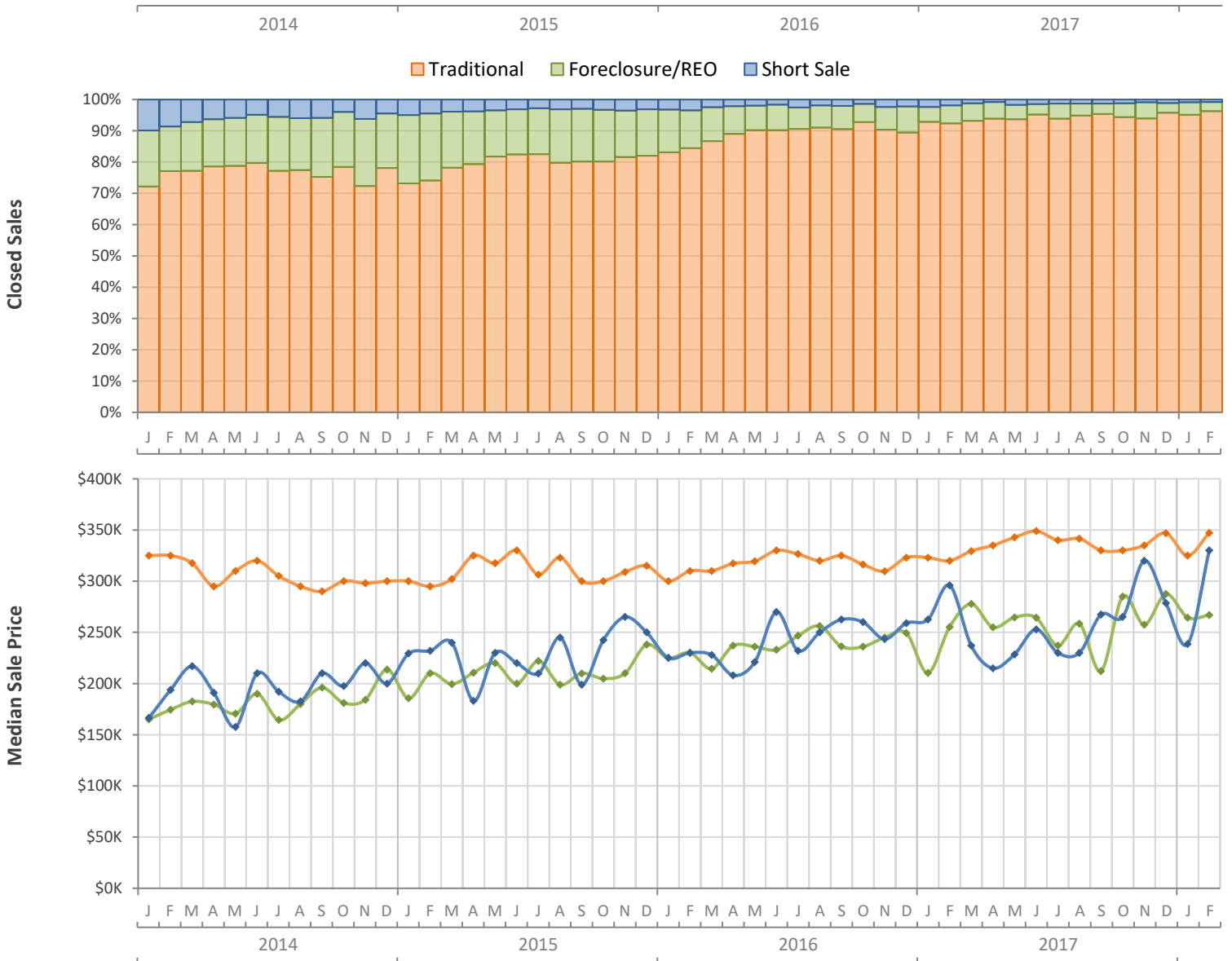
Monthly Distressed Market - February 2018

Single Family Homes

Palm Beach County



| | | February 2018 | February 2017 | Percent Change Year-over-Year |
|-----------------|-------------------|---------------|---------------|-------------------------------|
| Traditional | Closed Sales | 1,171 | 1,072 | 9.2% |
| | Median Sale Price | \$347,250 | \$320,000 | 8.5% |
| Foreclosure/REO | Closed Sales | 35 | 66 | -47.0% |
| | Median Sale Price | \$266,900 | \$255,240 | 4.6% |
| Short Sale | Closed Sales | 10 | 22 | -54.5% |
| | Median Sale Price | \$330,000 | \$296,000 | 11.5% |



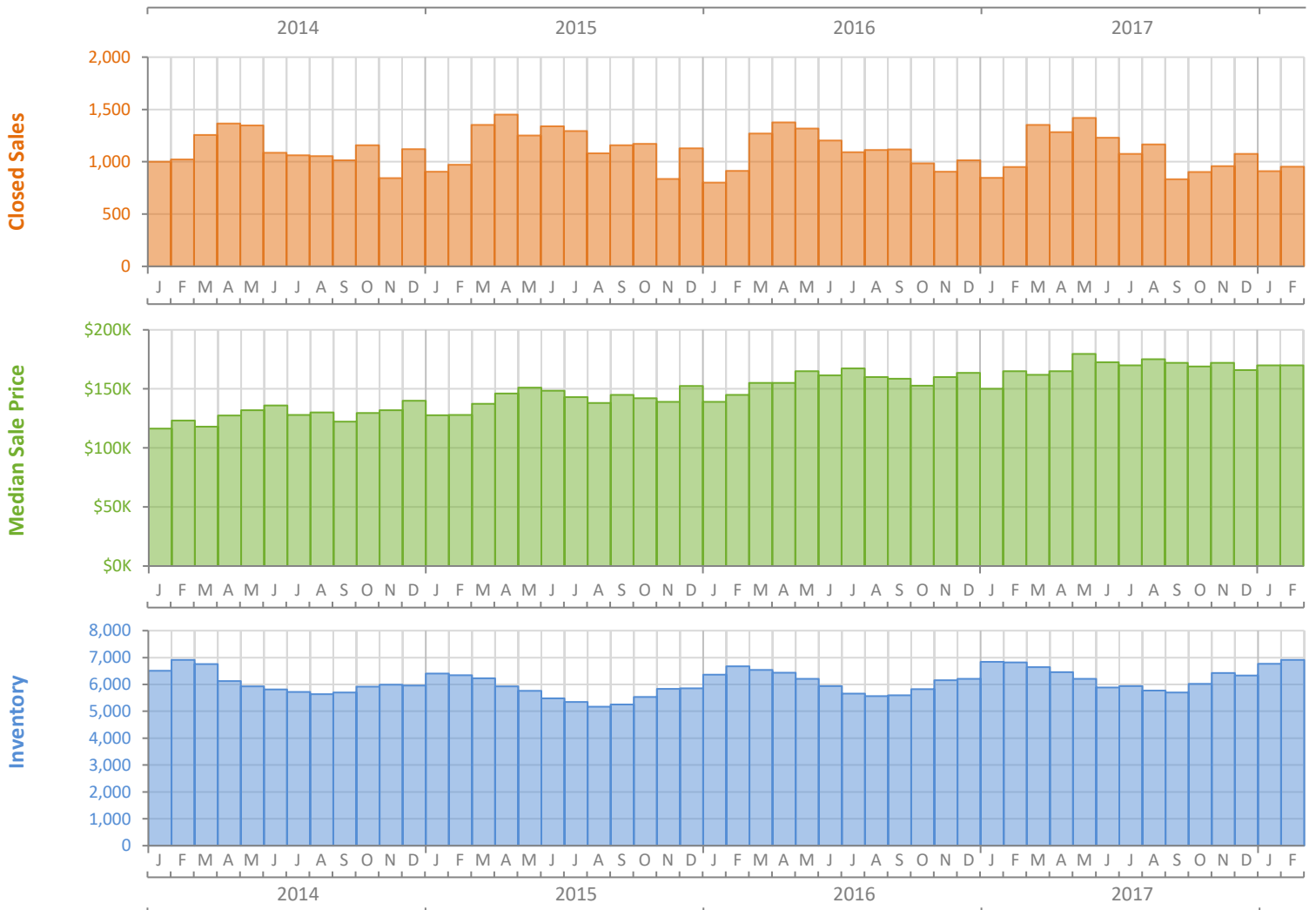
Monthly Market Summary - February 2018

Townhouses and Condos

Palm Beach County



| | February 2018 | February 2017 | Percent Change Year-over-Year |
|--|-----------------|-----------------|-------------------------------|
| Closed Sales | 953 | 950 | 0.3% |
| Paid in Cash | 605 | 657 | -7.9% |
| Median Sale Price | \$170,000 | \$165,000 | 3.0% |
| Average Sale Price | \$258,179 | \$258,587 | -0.2% |
| Dollar Volume | \$246.0 Million | \$245.7 Million | 0.2% |
| Med. Pct. of Orig. List Price Received | 94.1% | 93.4% | 0.7% |
| Median Time to Contract | 54 Days | 54 Days | 0.0% |
| Median Time to Sale | 92 Days | 95 Days | -3.2% |
| New Pending Sales | 1,452 | 1,426 | 1.8% |
| New Listings | 1,932 | 1,732 | 11.5% |
| Pending Inventory | 2,497 | 2,382 | 4.8% |
| Inventory (Active Listings) | 6,913 | 6,814 | 1.5% |
| Months Supply of Inventory | 6.3 | 6.2 | 1.6% |



Monthly Distressed Market - February 2018

Townhouses and Condos

Palm Beach County



| | | February 2018 | February 2017 | Percent Change Year-over-Year |
|-----------------|-------------------|---------------|---------------|-------------------------------|
| Traditional | Closed Sales | 927 | 893 | 3.8% |
| | Median Sale Price | \$172,750 | \$170,000 | 1.6% |
| Foreclosure/REO | Closed Sales | 16 | 49 | -67.3% |
| | Median Sale Price | \$123,525 | \$110,000 | 12.3% |
| Short Sale | Closed Sales | 10 | 8 | 25.0% |
| | Median Sale Price | \$125,000 | \$135,000 | -7.4% |

