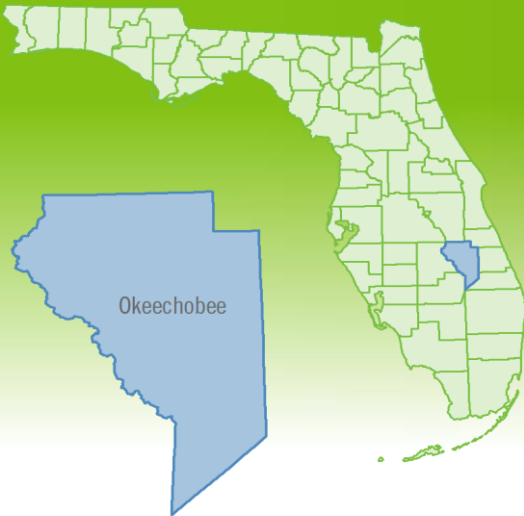


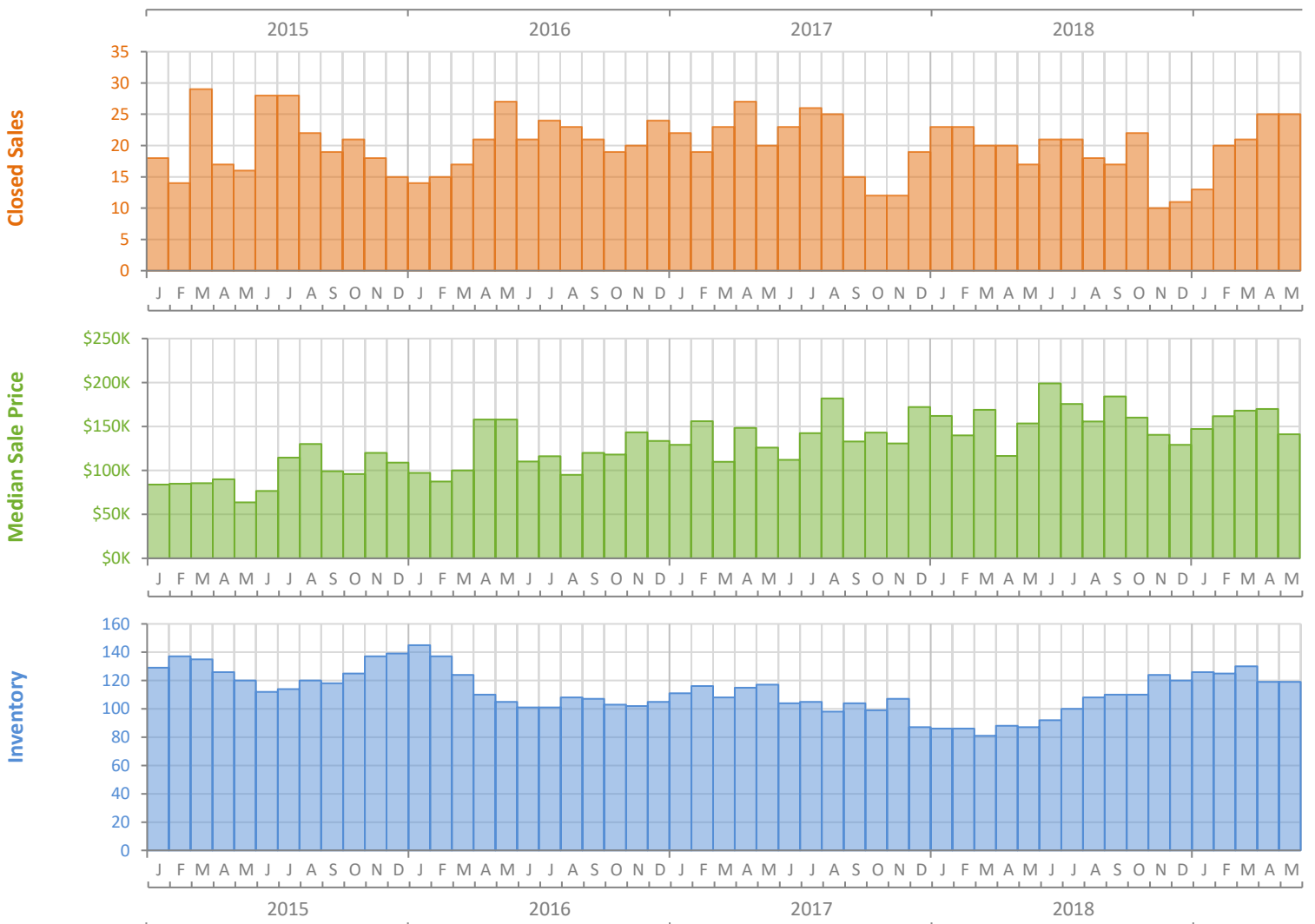
# Monthly Market Summary - May 2019

## Single Family Homes

### Okeechobee County



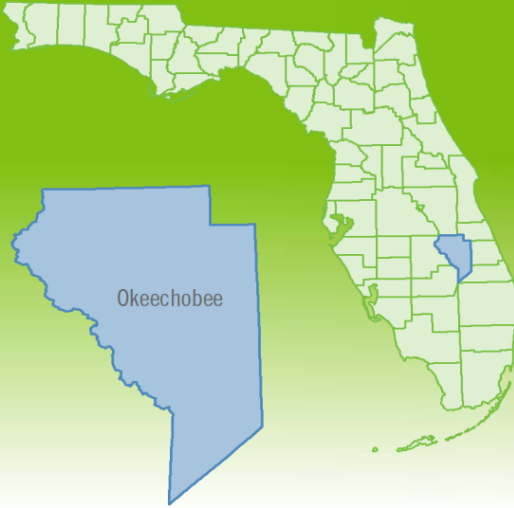
|  | May 2019      | May 2018      | Percent Change Year-over-Year |
|--|---------------|---------------|-------------------------------|
| Closed Sales                           | 25            | 17            | 47.1%                         |
| Paid in Cash                           | 6             | 5             | 20.0%                         |
| Median Sale Price                      | \$141,000     | \$153,500     | -8.1%                         |
| Average Sale Price                     | \$175,348     | \$156,729     | 11.9%                         |
| Dollar Volume                          | \$4.4 Million | \$2.7 Million | 64.5%                         |
| Med. Pct. of Orig. List Price Received | 96.0%         | 93.4%         | 2.8%                          |
| Median Time to Contract                | 26 Days       | 28 Days       | -7.1%                         |
| Median Time to Sale                    | 76 Days       | 73 Days       | 4.1%                          |
| New Pending Sales                      | 27            | 30            | -10.0%                        |
| New Listings                           | 32            | 26            | 23.1%                         |
| Pending Inventory                      | 45            | 49            | -8.2%                         |
| Inventory (Active Listings)            | 119           | 87            | 36.8%                         |
| Months Supply of Inventory             | 6.4           | 4.4           | 45.5%                         |



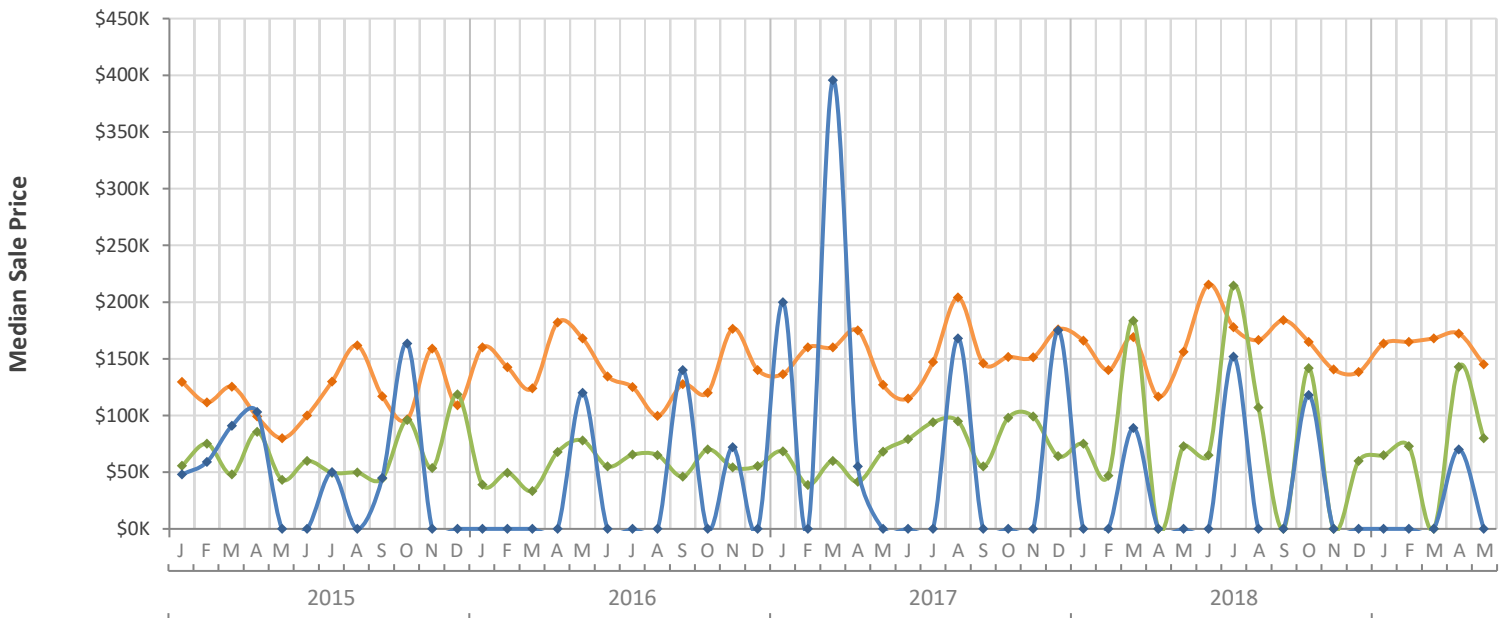
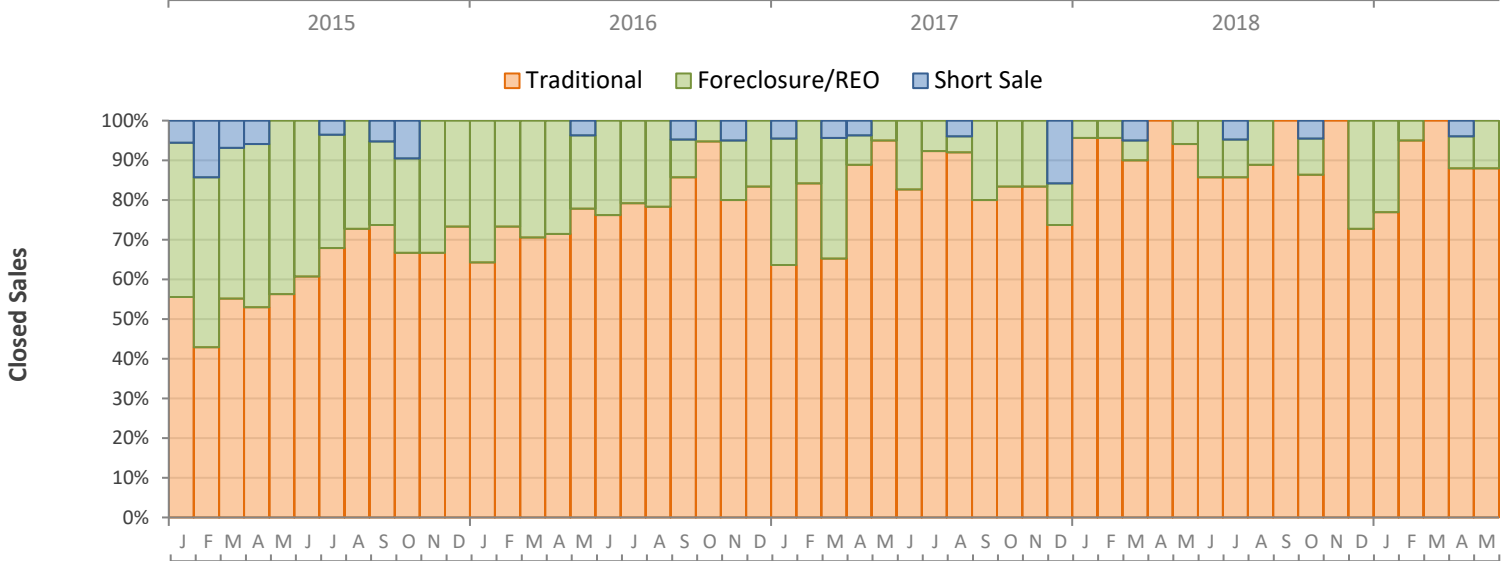
# Monthly Distressed Market - May 2019

## Single Family Homes

### Okeechobee County



|                 |                   | May 2019   | May 2018   | Percent Change Year-over-Year |
|-----------------|-------------------|------------|------------|-------------------------------|
| Traditional     | Closed Sales      | 22         | 16         | 37.5%                         |
|                 | Median Sale Price | \$145,000  | \$156,250  | -7.2%                         |
| Foreclosure/REO | Closed Sales      | 3          | 1          | 200.0%                        |
|                 | Median Sale Price | \$80,000   | \$73,000   | 9.6%                          |
| Short Sale      | Closed Sales      | 0          | 0          | N/A                           |
|                 | Median Sale Price | (No Sales) | (No Sales) | N/A                           |



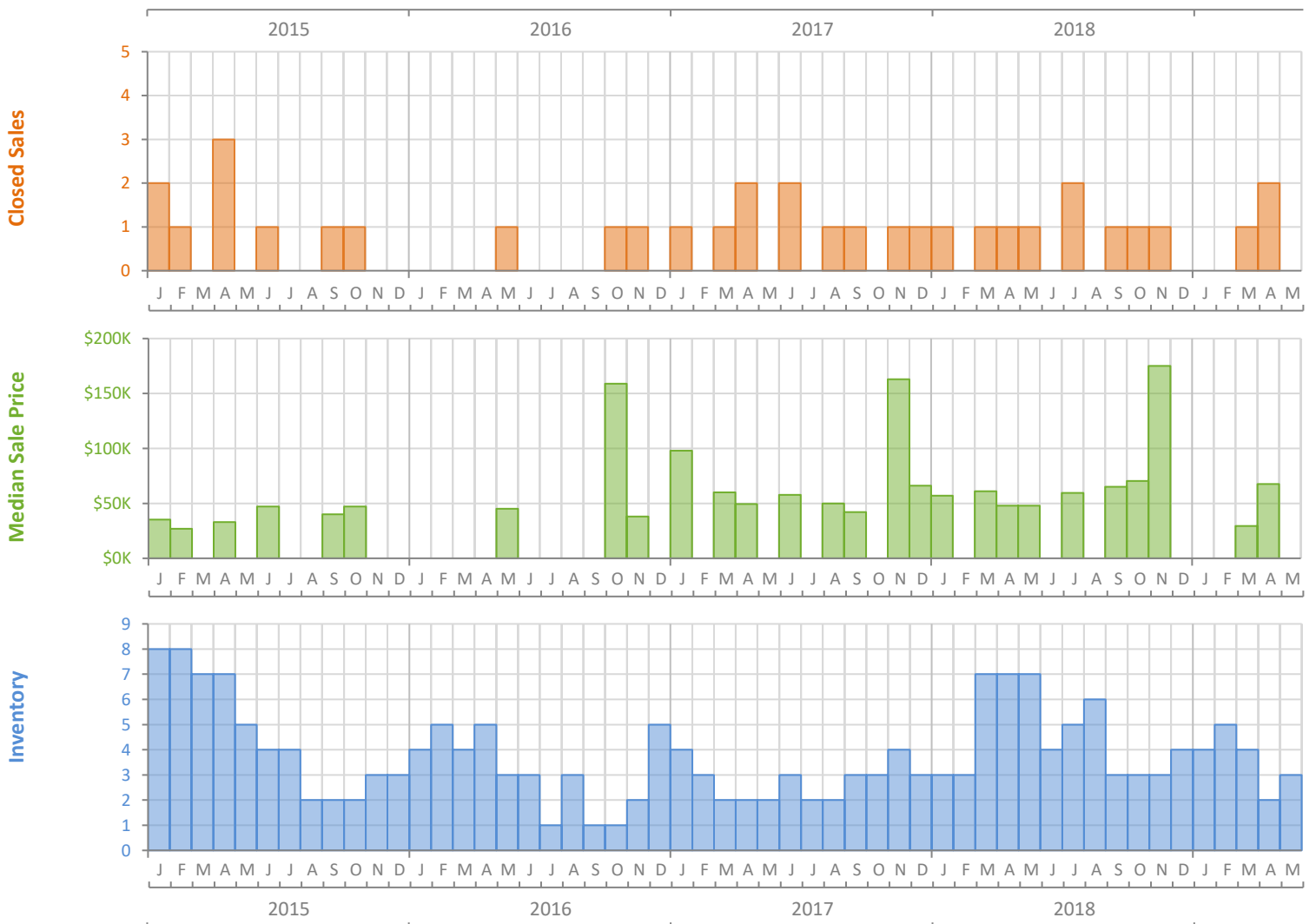
# Monthly Market Summary - May 2019

## Townhouses and Condos

### Okeechobee County



|  | May 2019 | May 2018 | Percent Change Year-over-Year |
|--|----------|----------|-------------------------------|
| Closed Sales                           | 0        | 1        | -100.0%                       |
| Paid in Cash                           | 0        | 1        | -100.0%                       |
| Median Sale Price                      | \$0      | \$48,000 | -100.0%                       |
| Average Sale Price                     | \$0      | \$48,000 | -100.0%                       |
| Dollar Volume                          | \$0      | \$48,000 | -100.0%                       |
| Med. Pct. of Orig. List Price Received | 0.0%     | 87.4%    | -100.0%                       |
| Median Time to Contract                | 0 Days   | 16 Days  | -100.0%                       |
| Median Time to Sale                    | 0 Days   | 16 Days  | -100.0%                       |
| New Pending Sales                      | 0        | 1        | -100.0%                       |
| New Listings                           | 1        | 0        | N/A                           |
| Pending Inventory                      | 0        | 0        | N/A                           |
| Inventory (Active Listings)            | 3        | 7        | -57.1%                        |
| Months Supply of Inventory             | 4.5      | 8.4      | -46.4%                        |



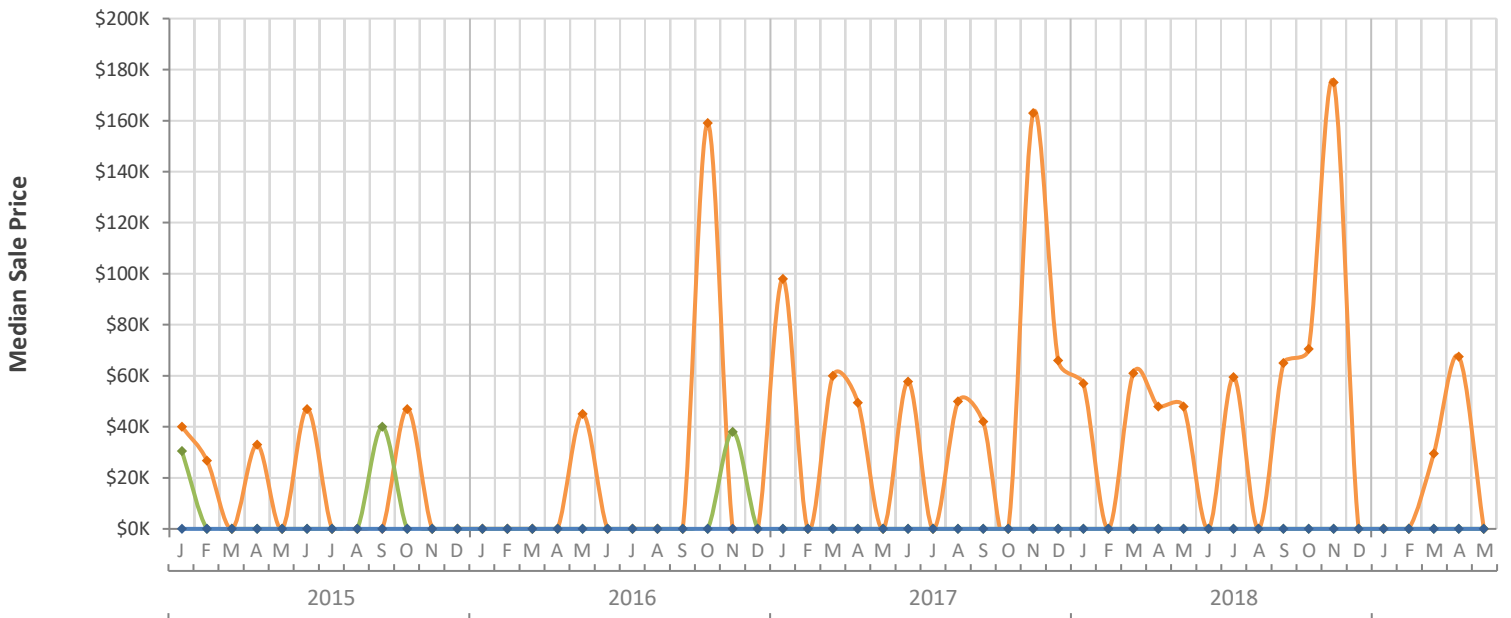
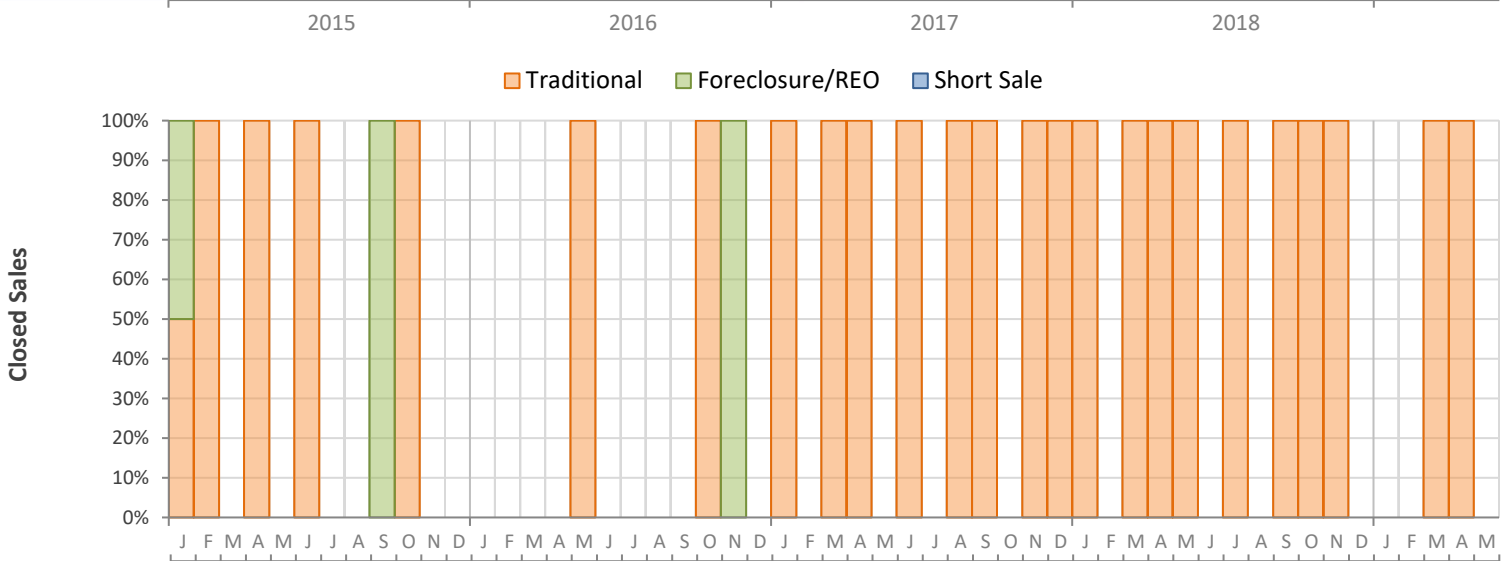
# Monthly Distressed Market - May 2019

## Townhouses and Condos

### Okeechobee County



|                 |                   | May 2019   | May 2018   | Percent Change Year-over-Year |
|-----------------|-------------------|------------|------------|-------------------------------|
| Traditional     | Closed Sales      | 0          | 1          | -100.0%                       |
|                 | Median Sale Price | (No Sales) | \$48,000   | N/A                           |
| Foreclosure/REO | Closed Sales      | 0          | 0          | N/A                           |
|                 | Median Sale Price | (No Sales) | (No Sales) | N/A                           |
| Short Sale      | Closed Sales      | 0          | 0          | N/A                           |
|                 | Median Sale Price | (No Sales) | (No Sales) | N/A                           |



Produced by Florida REALTORS® with data provided by Florida's multiple listing services. Statistics for each month compiled from MLS feeds on the 15th day of the following month. Data released on Friday, June 21, 2019. Next data release is Tuesday, July 23, 2019.