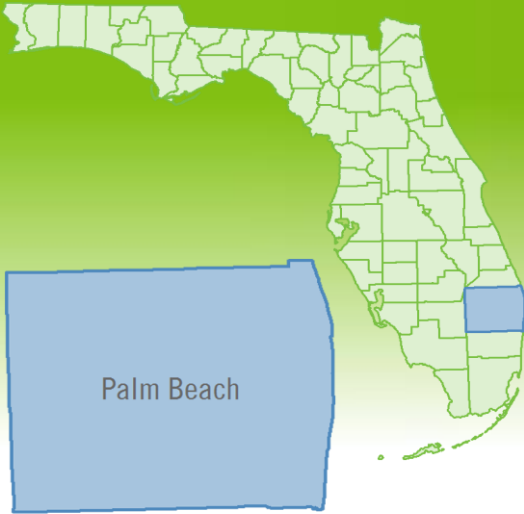


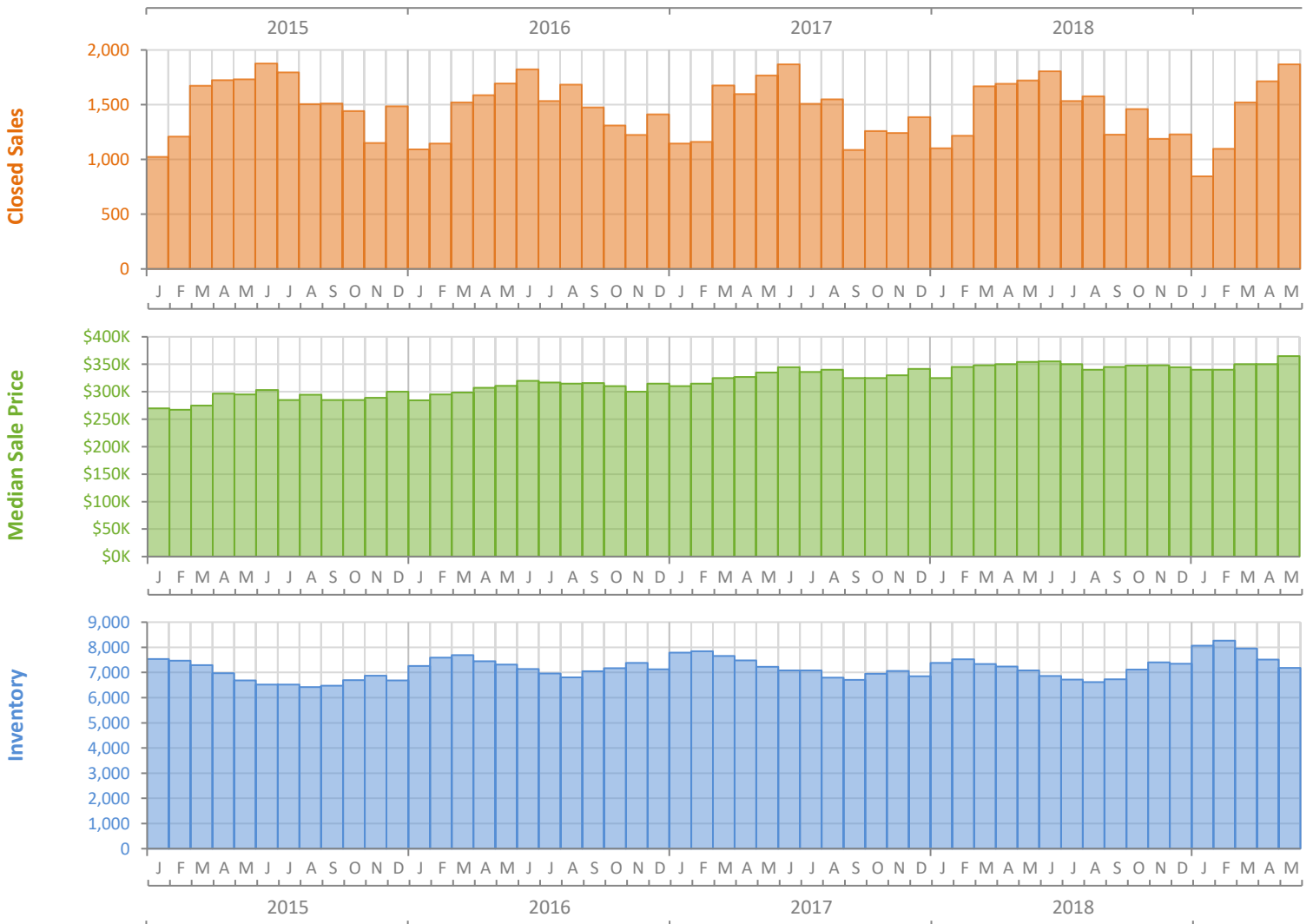
Monthly Market Summary - May 2019

Single Family Homes

Palm Beach County



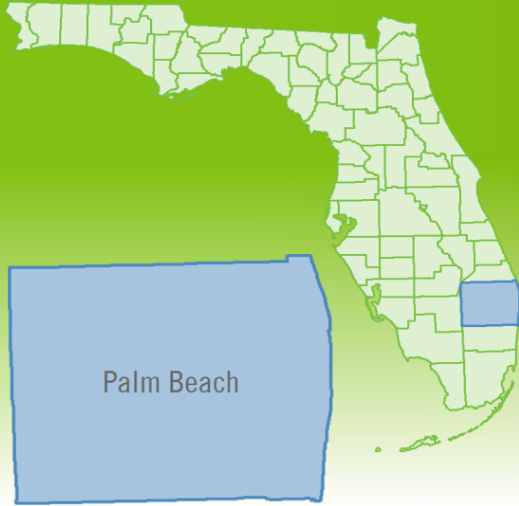
	May 2019	May 2018	Percent Change Year-over-Year
Closed Sales	1,870	1,721	8.7%
Paid in Cash	628	568	10.6%
Median Sale Price	\$364,900	\$354,000	3.1%
Average Sale Price	\$591,775	\$560,873	5.5%
Dollar Volume	\$1.1 Billion	\$965.3 Million	14.6%
Med. Pct. of Orig. List Price Received	94.6%	94.8%	-0.2%
Median Time to Contract	52 Days	49 Days	6.1%
Median Time to Sale	97 Days	93 Days	4.3%
New Pending Sales	1,913	1,805	6.0%
New Listings	2,139	2,145	-0.3%
Pending Inventory	3,155	3,126	0.9%
Inventory (Active Listings)	7,184	7,078	1.5%
Months Supply of Inventory	5.1	4.9	4.1%



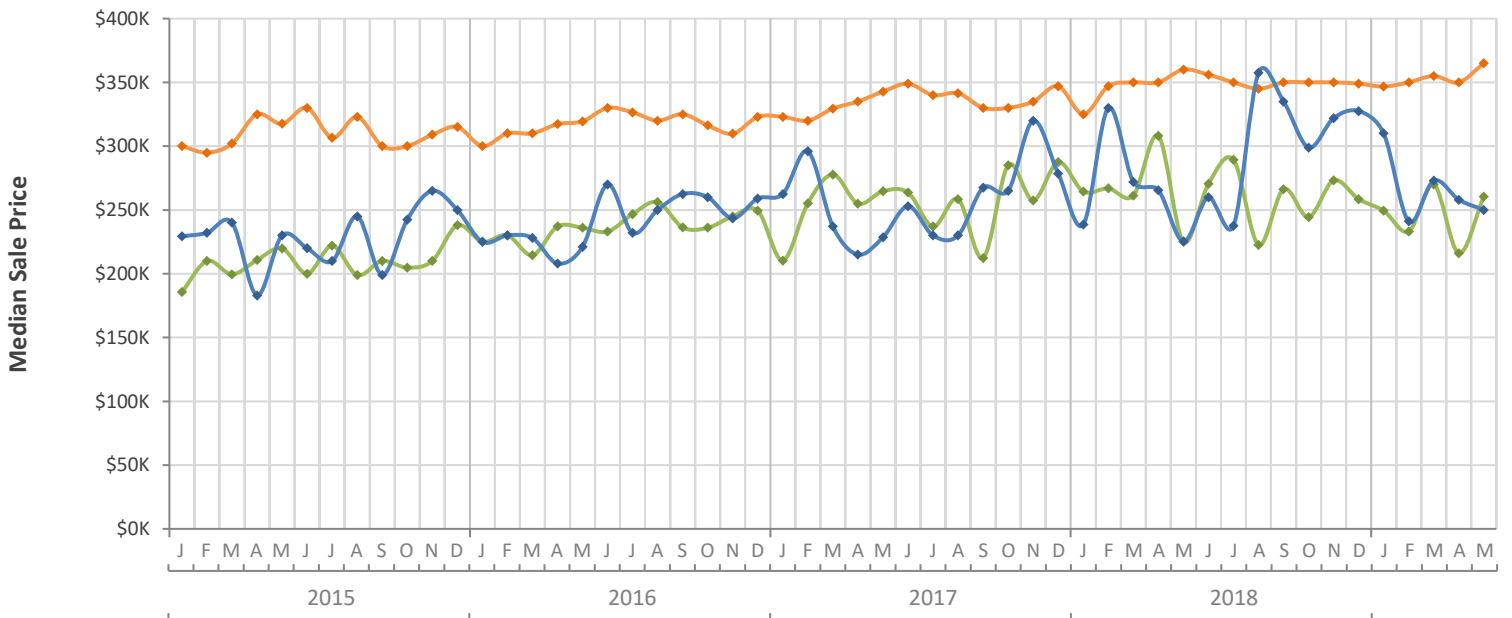
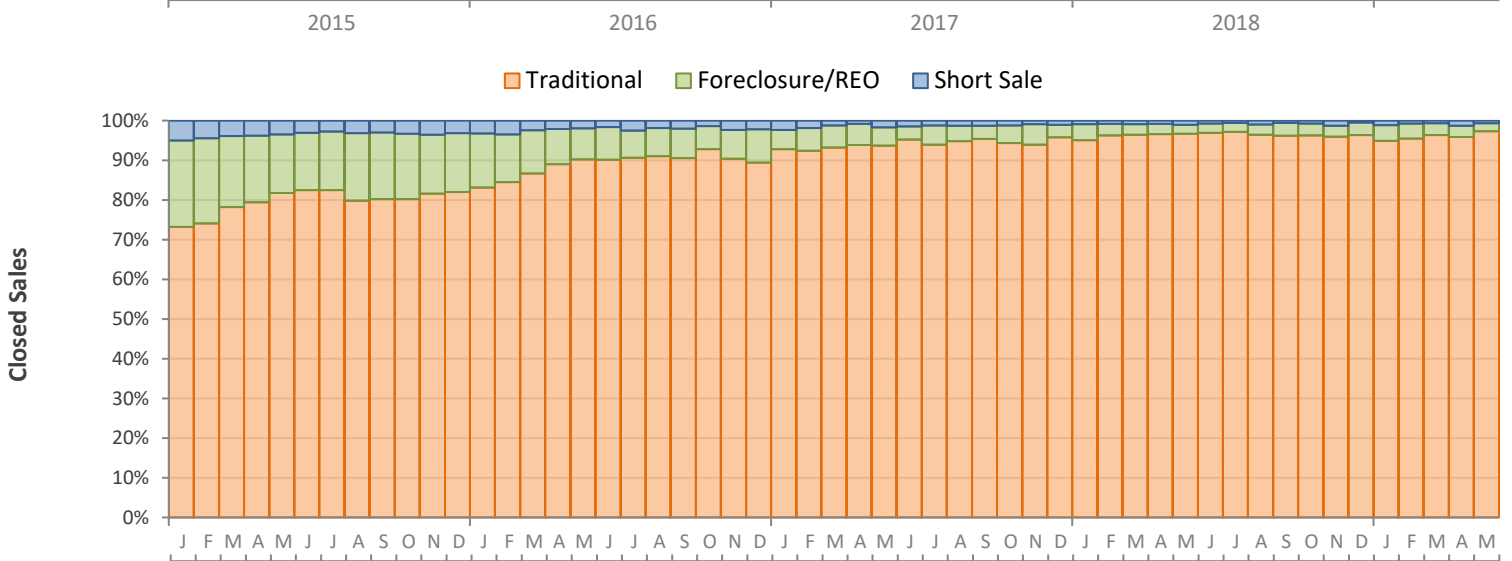
Monthly Distressed Market - May 2019

Single Family Homes

Palm Beach County



		May 2019	May 2018	Percent Change Year-over-Year
Traditional	Closed Sales	1,820	1,664	9.4%
	Median Sale Price	\$365,000	\$360,000	1.4%
Foreclosure/REO	Closed Sales	38	39	-2.6%
	Median Sale Price	\$260,463	\$225,000	15.8%
Short Sale	Closed Sales	12	18	-33.3%
	Median Sale Price	\$250,000	\$225,263	11.0%



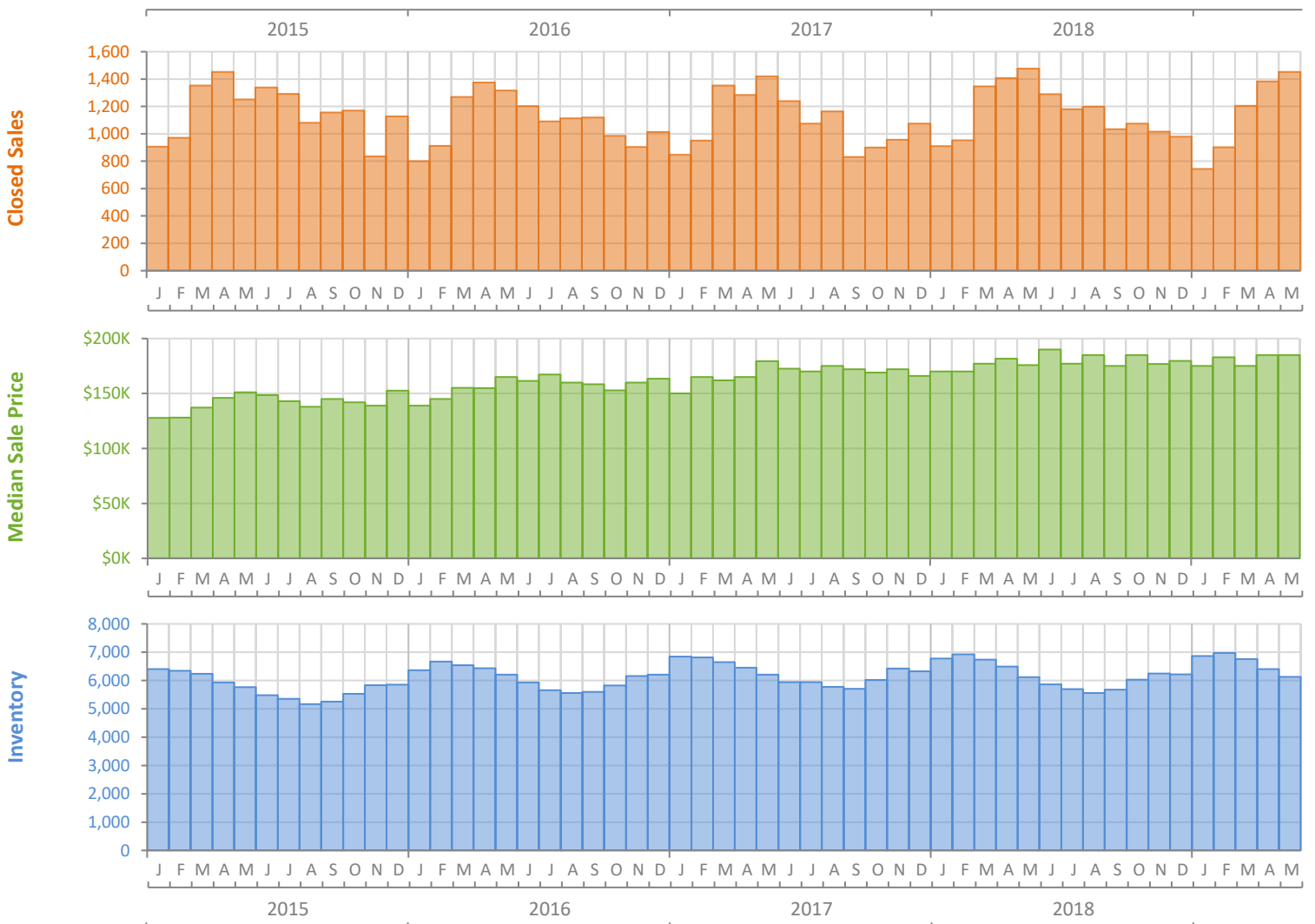
Monthly Market Summary - May 2019

Townhouses and Condos

Palm Beach County



	May 2019	May 2018	Percent Change Year-over-Year
Closed Sales	1,453	1,476	-1.6%
Paid in Cash	840	878	-4.3%
Median Sale Price	\$185,000	\$175,900	5.2%
Average Sale Price	\$283,898	\$331,001	-14.2%
Dollar Volume	\$412.5 Million	\$488.6 Million	-15.6%
Med. Pct. of Orig. List Price Received	93.6%	93.6%	0.0%
Median Time to Contract	56 Days	51 Days	9.8%
Median Time to Sale	98 Days	92 Days	6.5%
New Pending Sales	1,380	1,467	-5.9%
New Listings	1,600	1,633	-2.0%
Pending Inventory	2,317	2,430	-4.7%
Inventory (Active Listings)	6,131	6,122	0.1%
Months Supply of Inventory	5.5	5.5	0.0%



Monthly Distressed Market - May 2019

Townhouses and Condos

Palm Beach County



		May 2019	May 2018	Percent Change Year-over-Year
Traditional	Closed Sales	1,415	1,449	-2.3%
	Median Sale Price	\$188,000	\$176,000	6.8%
Foreclosure/REO	Closed Sales	33	24	37.5%
	Median Sale Price	\$134,000	\$141,500	-5.3%
Short Sale	Closed Sales	5	3	66.7%
	Median Sale Price	\$190,000	\$65,000	192.3%

