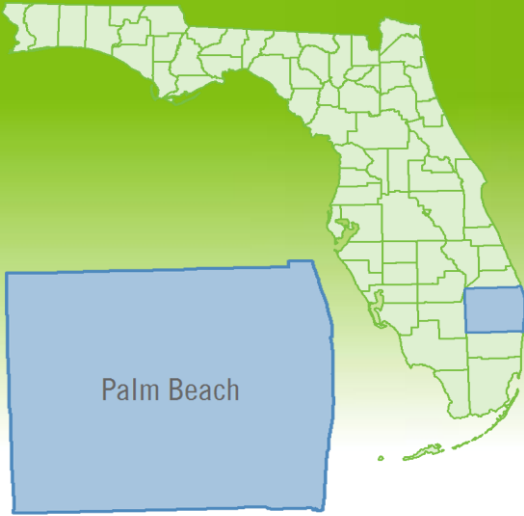


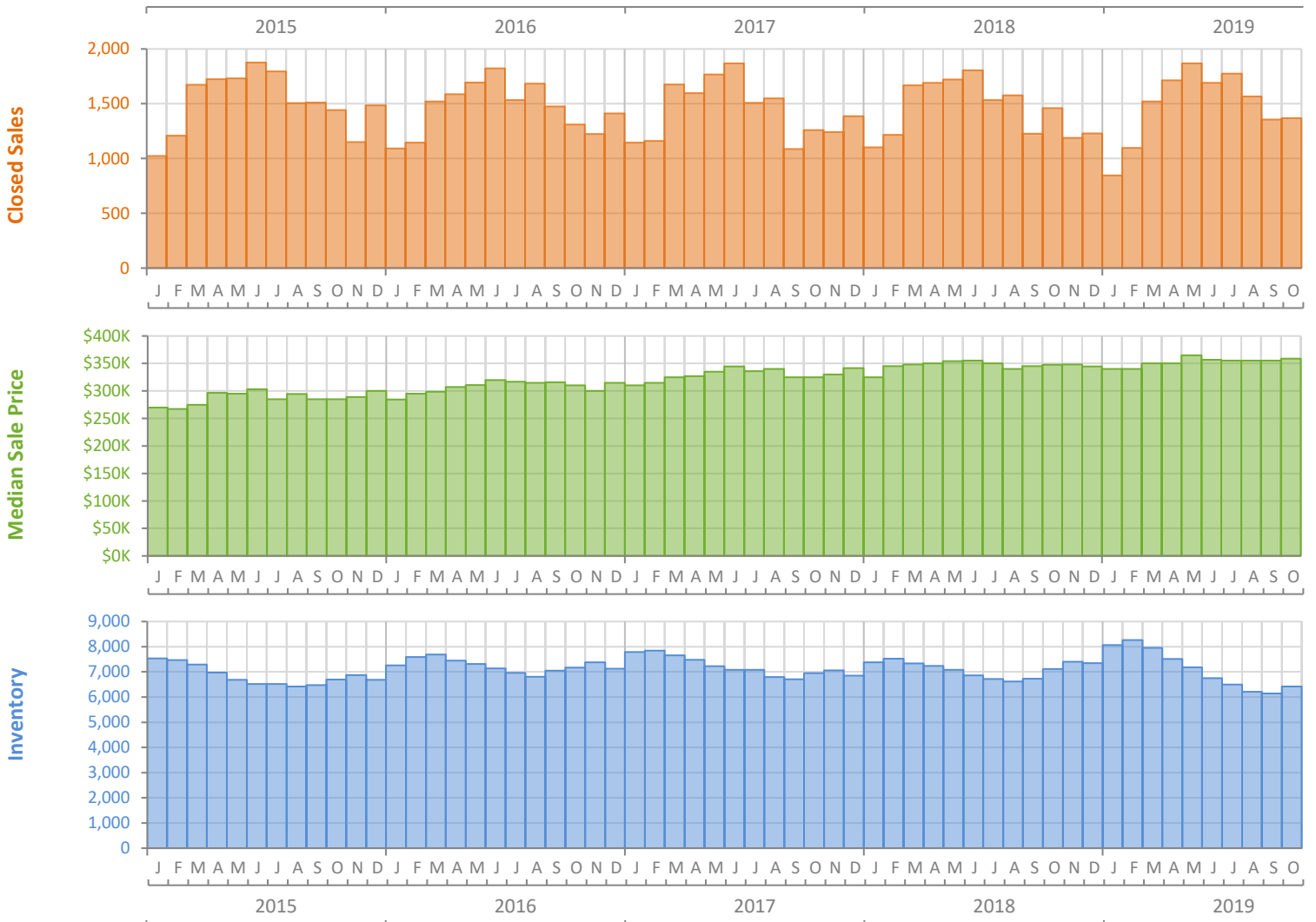
Monthly Market Summary - October 2019

Single Family Homes

Palm Beach County



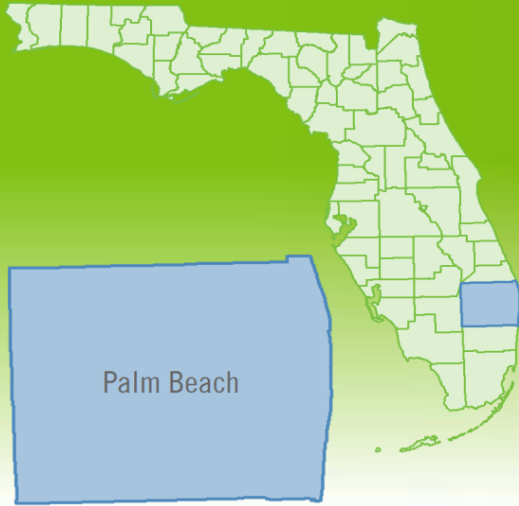
| | October 2019 | October 2018 | Percent Change Year-over-Year |
|--|-----------------|-----------------|-------------------------------|
| Closed Sales | 1,369 | 1,459 | -6.2% |
| Paid in Cash | 435 | 510 | -14.7% |
| Median Sale Price | \$359,000 | \$347,500 | 3.3% |
| Average Sale Price | \$518,140 | \$544,877 | -4.9% |
| Dollar Volume | \$709.3 Million | \$795.0 Million | -10.8% |
| Med. Pct. of Orig. List Price Received | 95.1% | 94.7% | 0.4% |
| Median Time to Contract | 54 Days | 52 Days | 3.8% |
| Median Time to Sale | 95 Days | 93 Days | 2.2% |
| New Pending Sales | 1,540 | 1,414 | 8.9% |
| New Listings | 2,104 | 2,127 | -1.1% |
| Pending Inventory | 2,430 | 2,220 | 9.5% |
| Inventory (Active Listings) | 6,420 | 7,112 | -9.7% |
| Months Supply of Inventory | 4.5 | 4.8 | -6.3% |



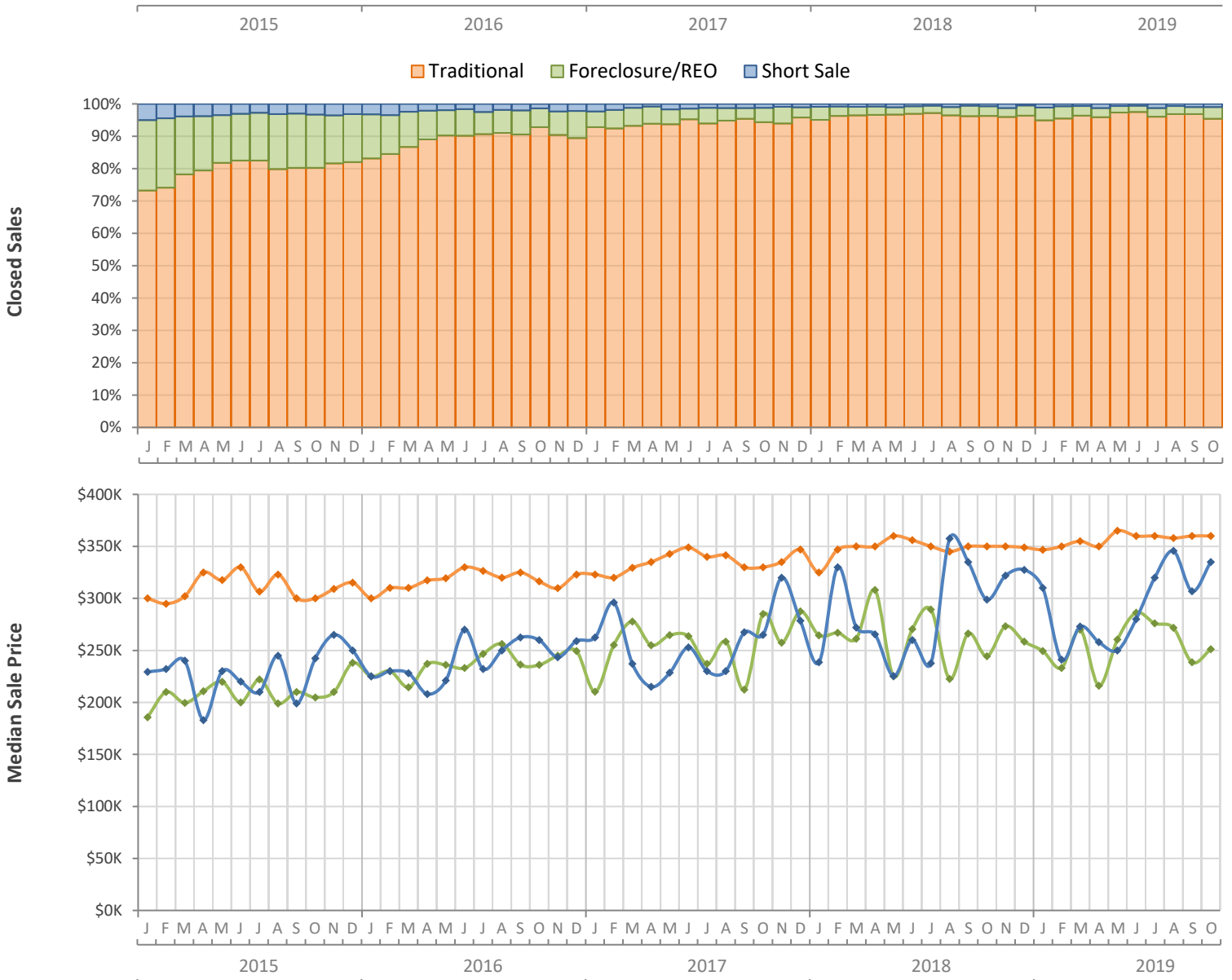
Monthly Distressed Market - October 2019

Single Family Homes

Palm Beach County



| | | October 2019 | October 2018 | Percent Change Year-over-Year |
|-----------------|-------------------|--------------|--------------|-------------------------------|
| Traditional | Closed Sales | 1,306 | 1,405 | -7.0% |
| | Median Sale Price | \$360,000 | \$350,000 | 2.9% |
| Foreclosure/REO | Closed Sales | 50 | 43 | 16.3% |
| | Median Sale Price | \$251,040 | \$244,351 | 2.7% |
| Short Sale | Closed Sales | 13 | 11 | 18.2% |
| | Median Sale Price | \$335,000 | \$298,892 | 12.1% |



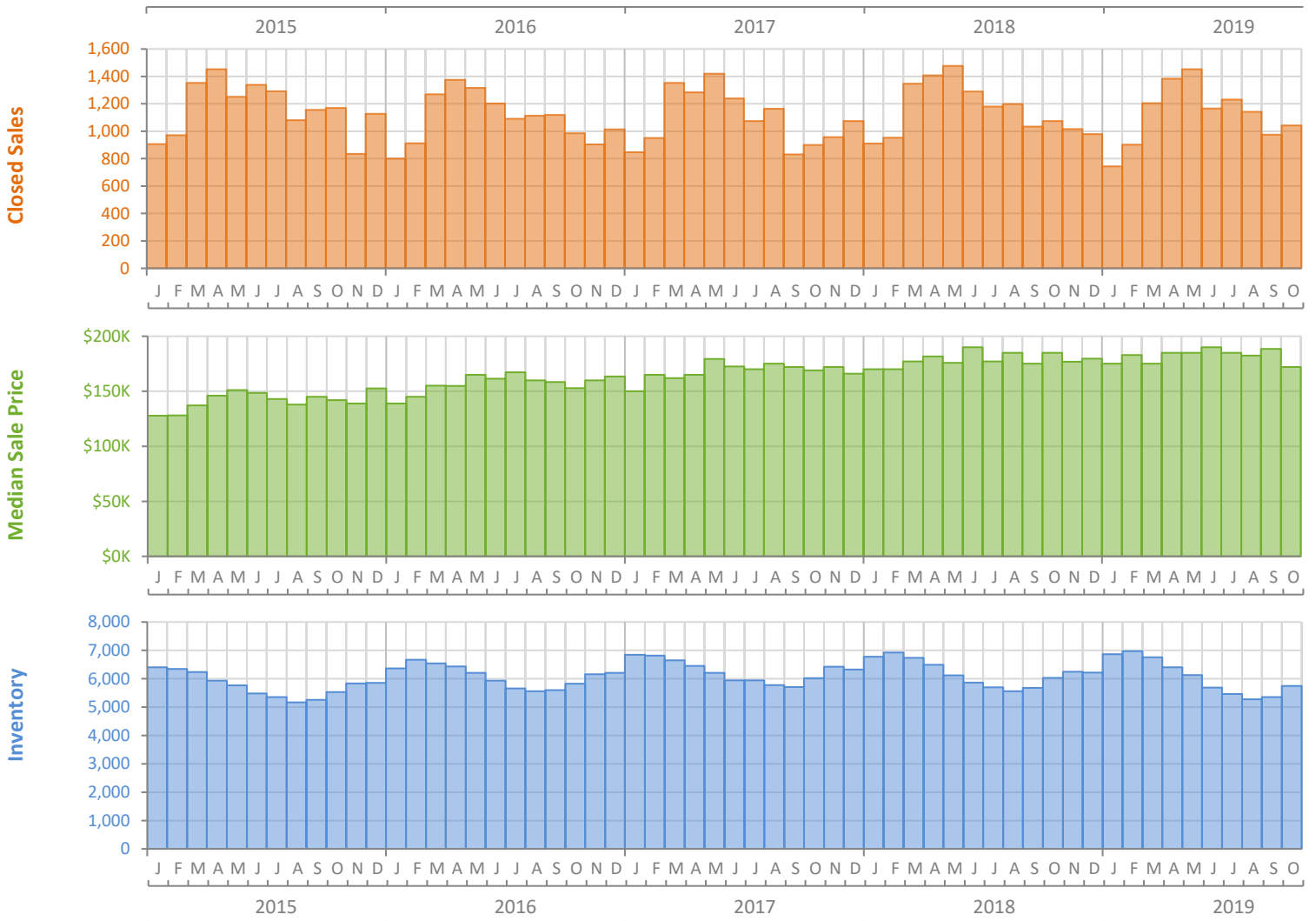
Monthly Market Summary - October 2019

Townhouses and Condos

Palm Beach County



| | October 2019 | October 2018 | Percent Change Year-over-Year |
|--|-----------------|-----------------|-------------------------------|
| Closed Sales | 1,043 | 1,074 | -2.9% |
| Paid in Cash | 597 | 601 | -0.7% |
| Median Sale Price | \$172,000 | \$185,000 | -7.0% |
| Average Sale Price | \$272,315 | \$265,321 | 2.6% |
| Dollar Volume | \$284.0 Million | \$285.0 Million | -0.3% |
| Med. Pct. of Orig. List Price Received | 93.8% | 94.4% | -0.6% |
| Median Time to Contract | 57 Days | 52 Days | 9.6% |
| Median Time to Sale | 99 Days | 95 Days | 4.2% |
| New Pending Sales | 1,165 | 1,179 | -1.2% |
| New Listings | 1,822 | 1,815 | 0.4% |
| Pending Inventory | 1,972 | 1,944 | 1.4% |
| Inventory (Active Listings) | 5,743 | 6,027 | -4.7% |
| Months Supply of Inventory | 5.2 | 5.2 | 0.0% |



Monthly Distressed Market - October 2019

Townhouses and Condos

Palm Beach County



| | | October 2019 | October 2018 | Percent Change Year-over-Year |
|-----------------|-------------------|--------------|--------------|-------------------------------|
| Traditional | Closed Sales | 1,011 | 1,049 | -3.6% |
| | Median Sale Price | \$172,000 | \$185,000 | -7.0% |
| Foreclosure/REO | Closed Sales | 28 | 20 | 40.0% |
| | Median Sale Price | \$134,000 | \$131,938 | 1.6% |
| Short Sale | Closed Sales | 4 | 5 | -20.0% |
| | Median Sale Price | \$222,500 | \$125,000 | 78.0% |

