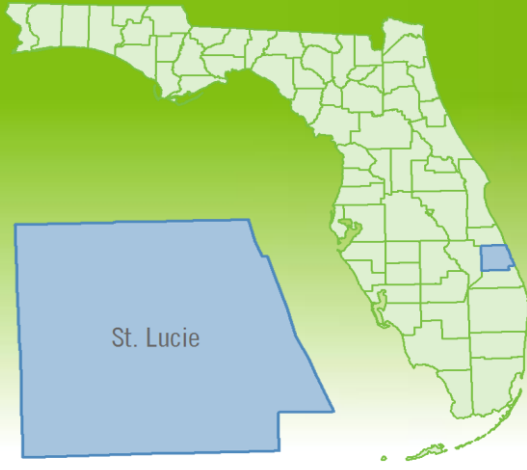


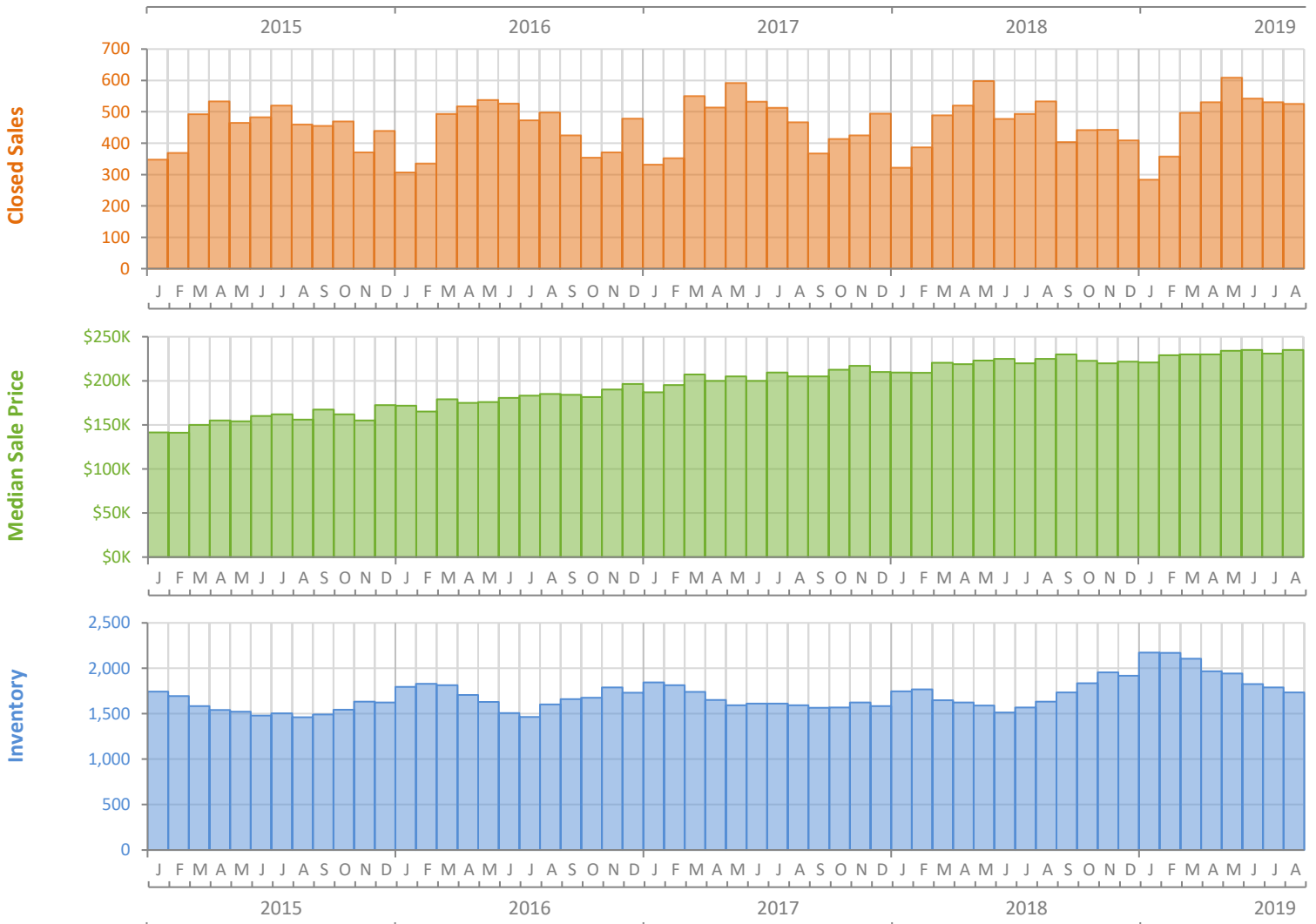
Monthly Market Summary - August 2019

Single Family Homes

St. Lucie County



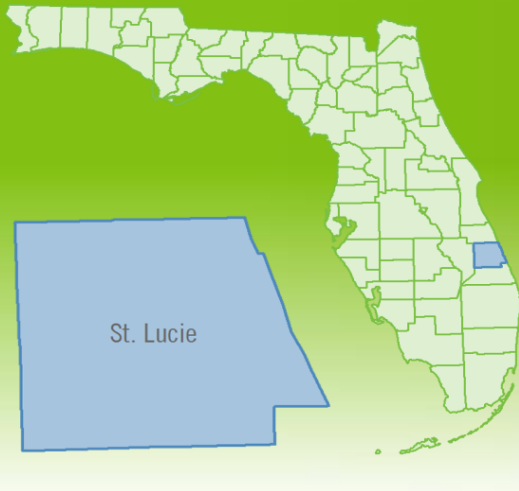
| | August 2019 | August 2018 | Percent Change Year-over-Year |
|--|-----------------|-----------------|-------------------------------|
| Closed Sales | 525 | 533 | -1.5% |
| Paid in Cash | 111 | 119 | -6.7% |
| Median Sale Price | \$235,000 | \$225,000 | 4.4% |
| Average Sale Price | \$240,298 | \$235,960 | 1.8% |
| Dollar Volume | \$126.2 Million | \$125.8 Million | 0.3% |
| Med. Pct. of Orig. List Price Received | 96.8% | 96.6% | 0.2% |
| Median Time to Contract | 38 Days | 37 Days | 2.7% |
| Median Time to Sale | 88 Days | 80 Days | 10.0% |
| New Pending Sales | 544 | 535 | 1.7% |
| New Listings | 603 | 685 | -12.0% |
| Pending Inventory | 912 | 831 | 9.7% |
| Inventory (Active Listings) | 1,733 | 1,633 | 6.1% |
| Months Supply of Inventory | 3.7 | 3.6 | 2.8% |



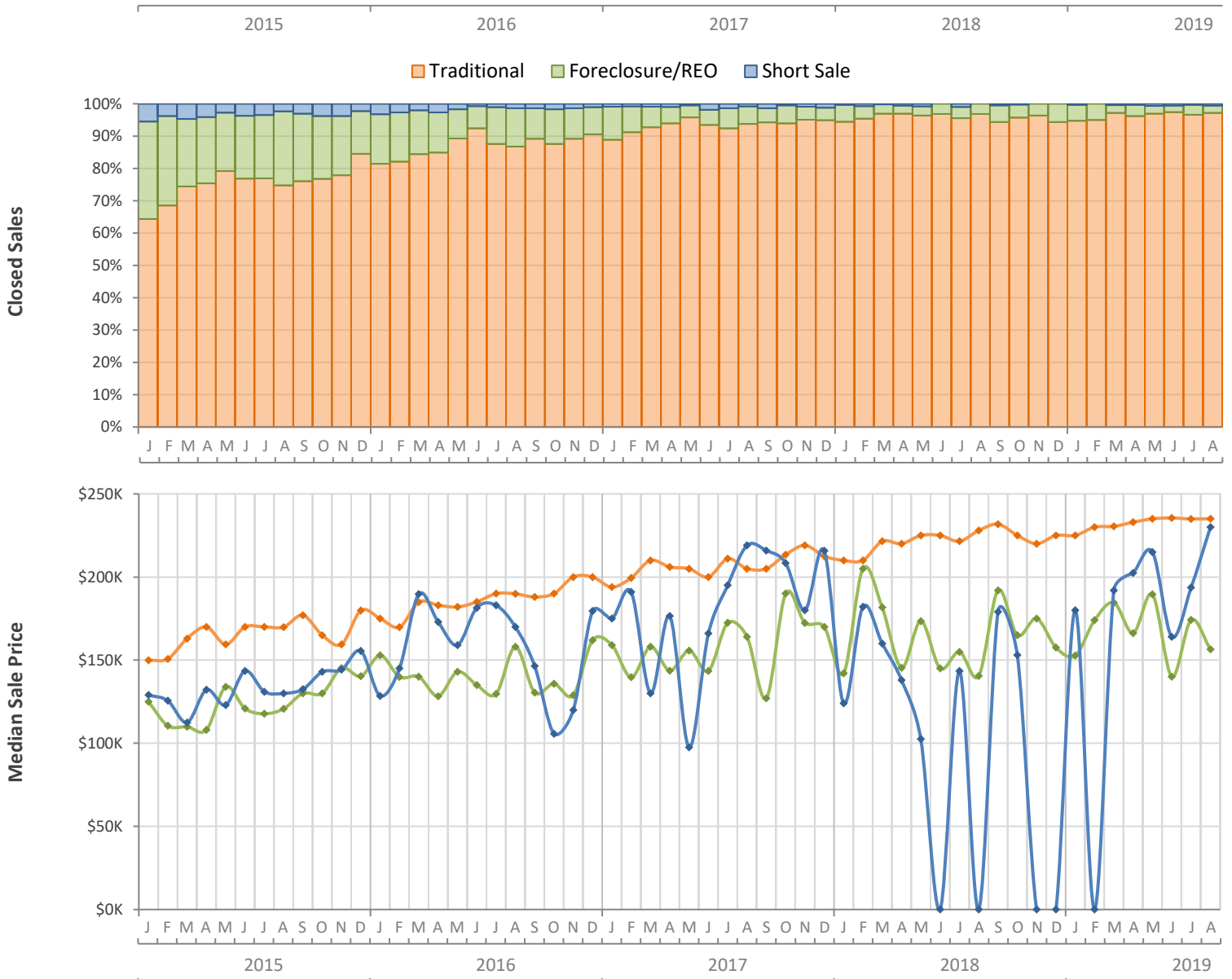
Monthly Distressed Market - August 2019

Single Family Homes

St. Lucie County



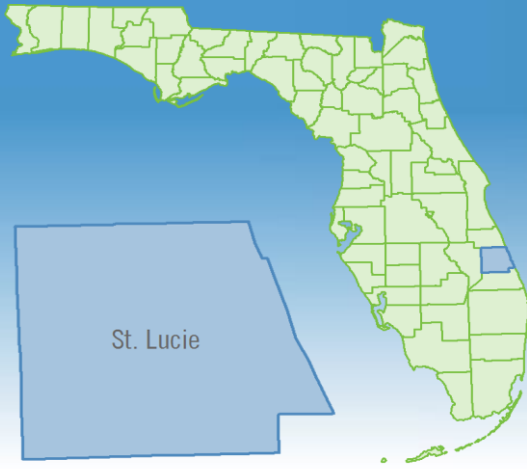
| | | August 2019 | August 2018 | Percent Change Year-over-Year |
|-----------------|-------------------|-------------|-------------|-------------------------------|
| Traditional | Closed Sales | 510 | 516 | -1.2% |
| | Median Sale Price | \$235,000 | \$228,000 | 3.1% |
| Foreclosure/REO | Closed Sales | 12 | 17 | -29.4% |
| | Median Sale Price | \$156,500 | \$140,500 | 11.4% |
| Short Sale | Closed Sales | 3 | 0 | N/A |
| | Median Sale Price | \$230,000 | (No Sales) | N/A |



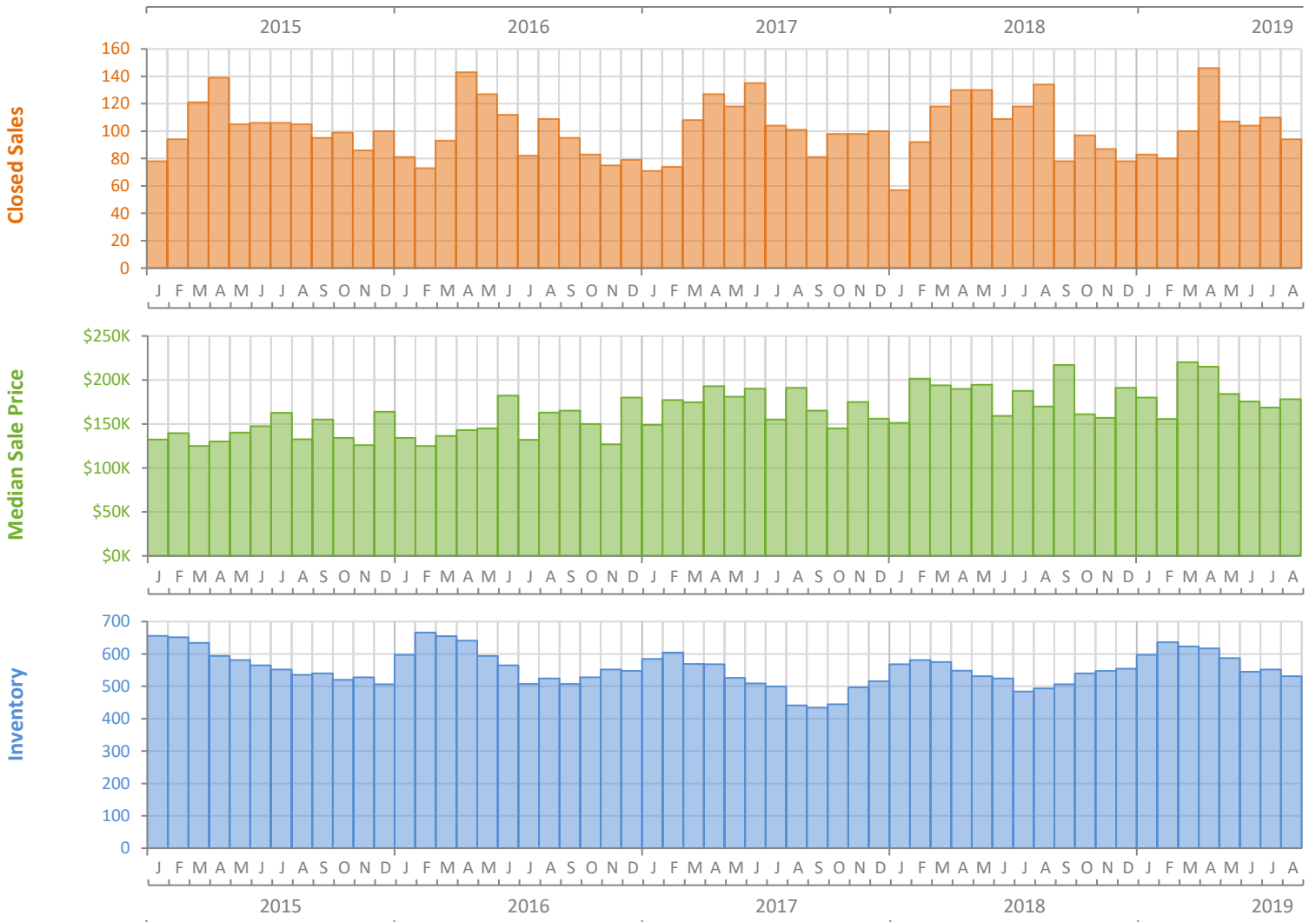
Monthly Market Summary - August 2019

Townhouses and Condos

St. Lucie County



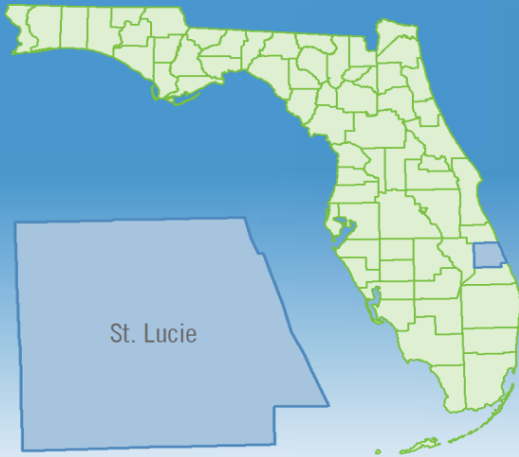
| | August 2019 | August 2018 | Percent Change Year-over-Year |
|--|----------------|----------------|-------------------------------|
| Closed Sales | 94 | 134 | -29.9% |
| Paid in Cash | 38 | 72 | -47.2% |
| Median Sale Price | \$178,200 | \$169,900 | 4.9% |
| Average Sale Price | \$212,752 | \$277,385 | -23.3% |
| Dollar Volume | \$20.0 Million | \$37.2 Million | -46.2% |
| Med. Pct. of Orig. List Price Received | 95.3% | 95.5% | -0.2% |
| Median Time to Contract | 57 Days | 48 Days | 18.8% |
| Median Time to Sale | 99 Days | 88 Days | 12.5% |
| New Pending Sales | 95 | 111 | -14.4% |
| New Listings | 108 | 149 | -27.5% |
| Pending Inventory | 131 | 134 | -2.2% |
| Inventory (Active Listings) | 531 | 493 | 7.7% |
| Months Supply of Inventory | 5.5 | 4.7 | 17.0% |



Monthly Distressed Market - August 2019

Townhouses and Condos

St. Lucie County



| | | August 2019 | August 2018 | Percent Change Year-over-Year |
|-----------------|-------------------|-------------|-------------|-------------------------------|
| Traditional | Closed Sales | 90 | 131 | -31.3% |
| | Median Sale Price | \$182,750 | \$169,450 | 7.8% |
| Foreclosure/REO | Closed Sales | 3 | 3 | 0.0% |
| | Median Sale Price | \$124,000 | \$255,900 | -51.5% |
| Short Sale | Closed Sales | 1 | 0 | N/A |
| | Median Sale Price | \$249,000 | (No Sales) | N/A |

