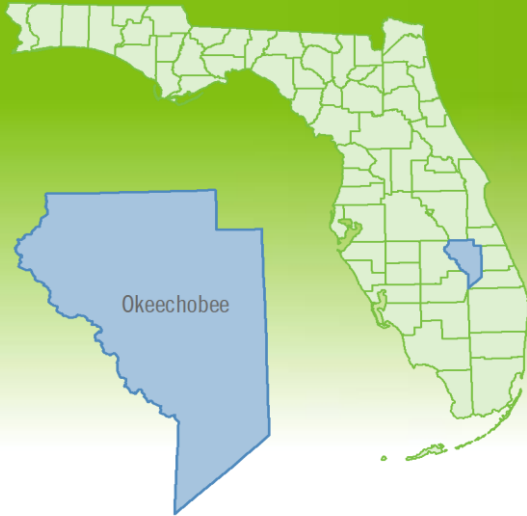


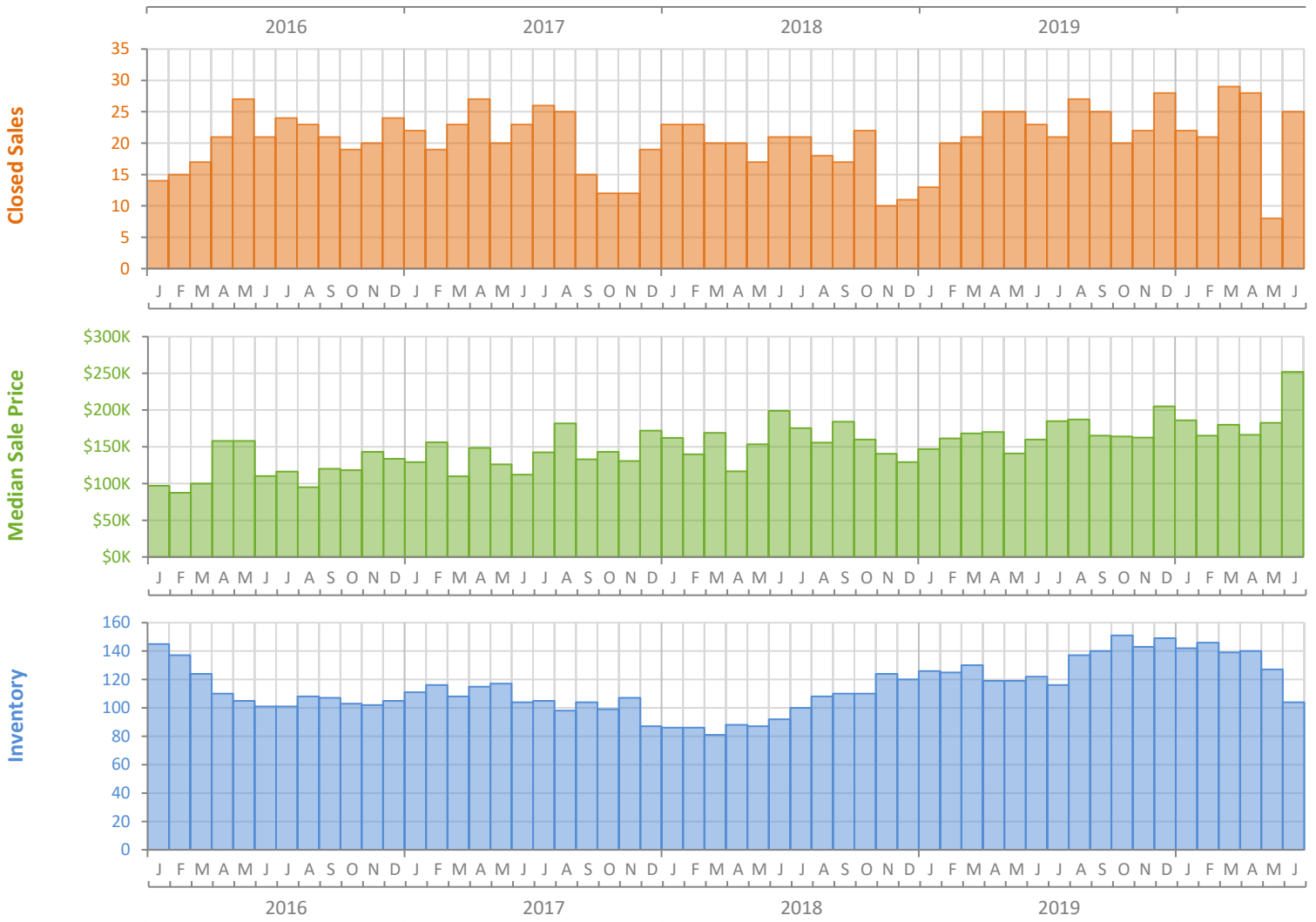
Monthly Market Summary - June 2020

Single Family Homes

Okeechobee County



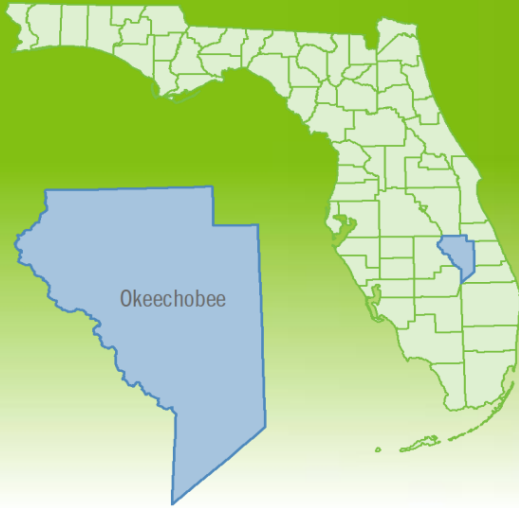
| | June 2020 | June 2019 | Percent Change Year-over-Year |
|--|---------------|---------------|-------------------------------|
| Closed Sales | 25 | 23 | 8.7% |
| Paid in Cash | 8 | 7 | 14.3% |
| Median Sale Price | \$252,000 | \$160,000 | 57.5% |
| Average Sale Price | \$235,056 | \$194,967 | 20.6% |
| Dollar Volume | \$5.9 Million | \$4.5 Million | 31.0% |
| Med. Pct. of Orig. List Price Received | 90.0% | 93.2% | -3.4% |
| Median Time to Contract | 108 Days | 56 Days | 92.9% |
| Median Time to Sale | 138 Days | 110 Days | 25.5% |
| New Pending Sales | 32 | 22 | 45.5% |
| New Listings | 23 | 34 | -32.4% |
| Pending Inventory | 52 | 45 | 15.6% |
| Inventory (Active Listings) | 104 | 122 | -14.8% |
| Months Supply of Inventory | 4.5 | 6.5 | -30.8% |



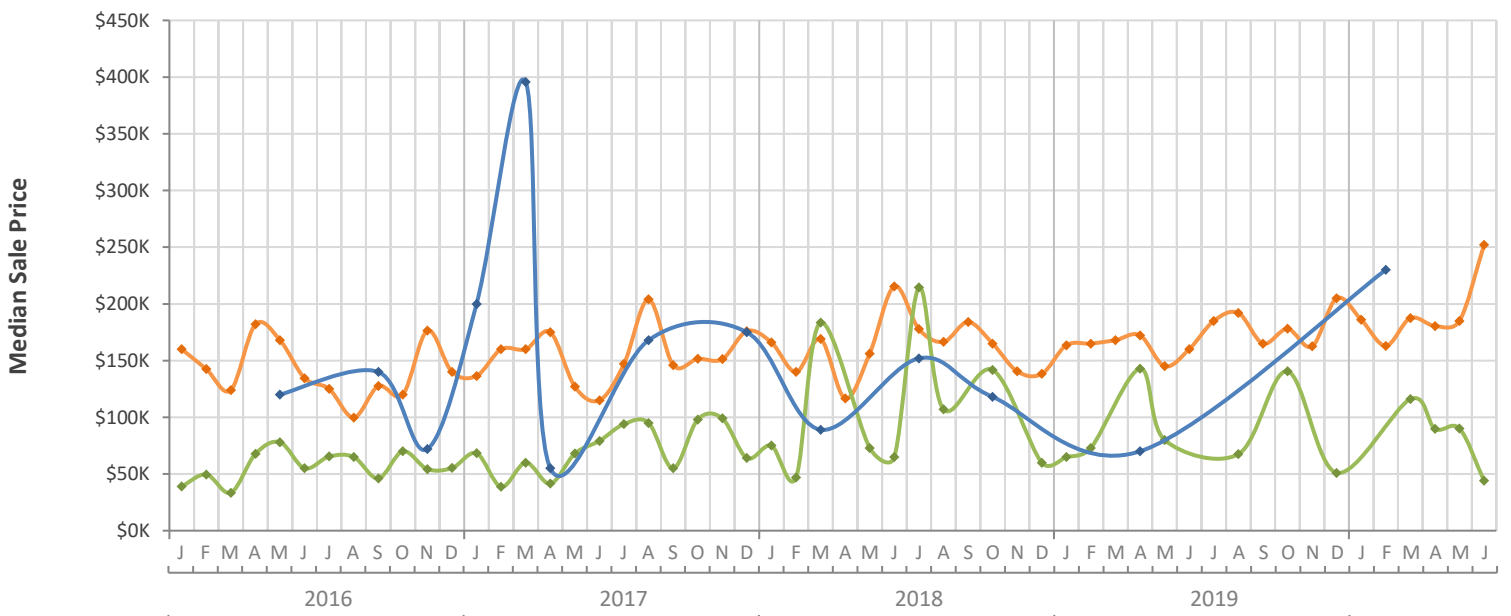
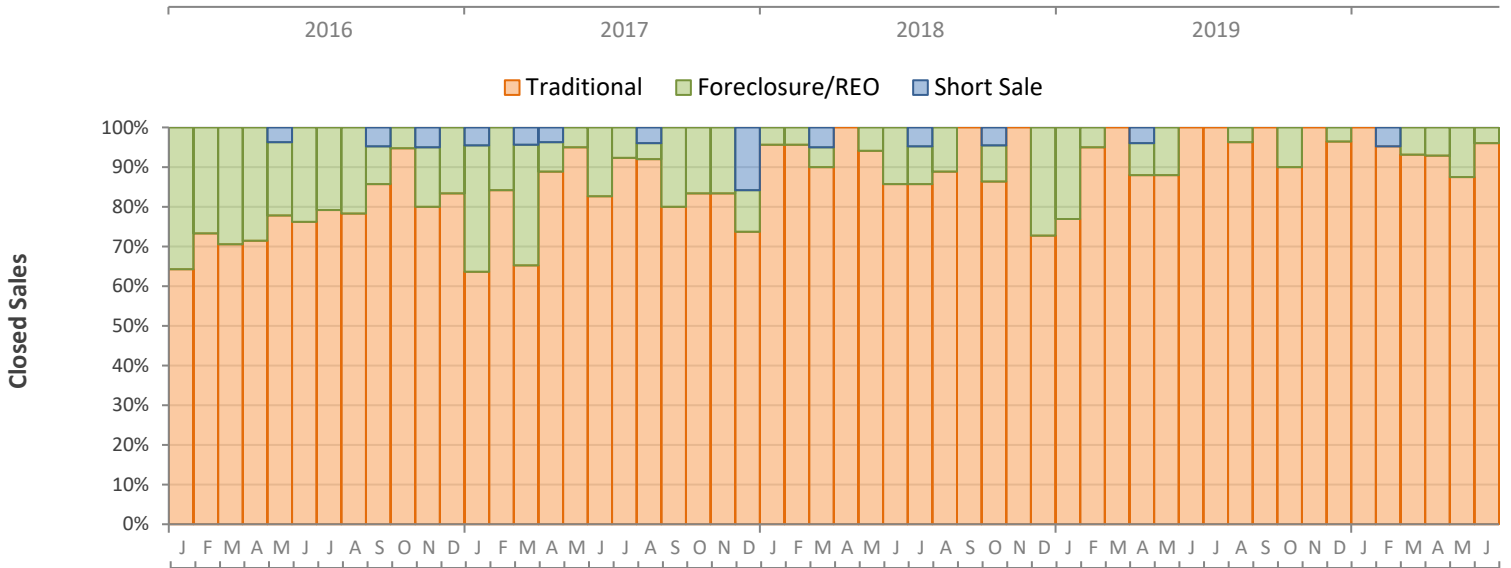
Monthly Distressed Market - June 2020

Single Family Homes

Okeechobee County



| | | June 2020 | June 2019 | Percent Change Year-over-Year |
|-----------------|-------------------|------------|------------|-------------------------------|
| Traditional | Closed Sales | 24 | 23 | 4.3% |
| | Median Sale Price | \$252,000 | \$160,000 | 57.5% |
| Foreclosure/REO | Closed Sales | 1 | 0 | N/A |
| | Median Sale Price | \$44,000 | (No Sales) | N/A |
| Short Sale | Closed Sales | 0 | 0 | N/A |
| | Median Sale Price | (No Sales) | (No Sales) | N/A |



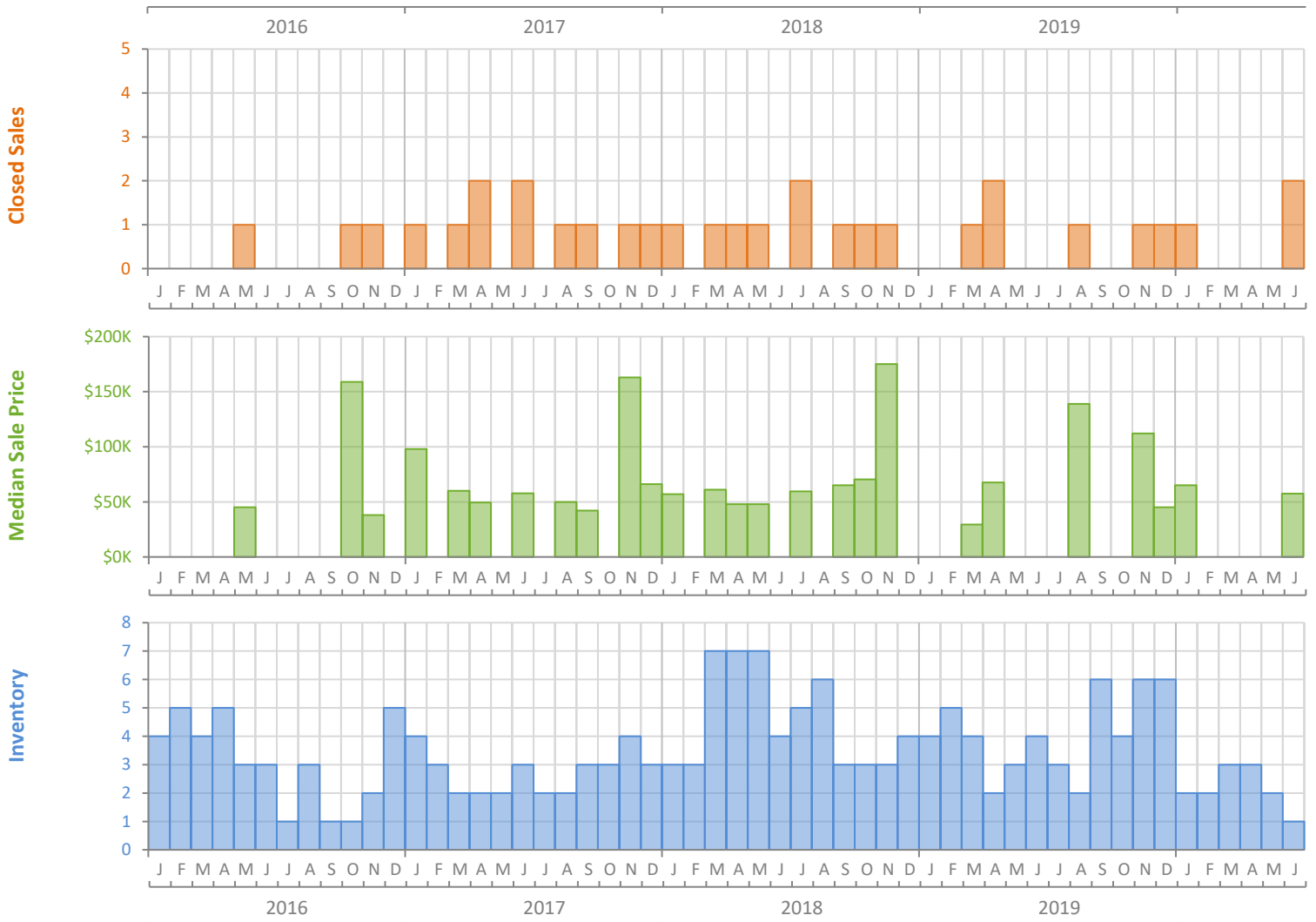
Monthly Market Summary - June 2020

Townhouses and Condos

Okeechobee County



| | June 2020 | June 2019 | Percent Change Year-over-Year |
|--|-----------|------------|-------------------------------|
| Closed Sales | 2 | 0 | N/A |
| Paid in Cash | 1 | 0 | N/A |
| Median Sale Price | \$57,500 | (No Sales) | N/A |
| Average Sale Price | \$57,500 | (No Sales) | N/A |
| Dollar Volume | \$115,000 | \$0 | N/A |
| Med. Pct. of Orig. List Price Received | 91.0% | (No Sales) | N/A |
| Median Time to Contract | 120 Days | (No Sales) | N/A |
| Median Time to Sale | 153 Days | (No Sales) | N/A |
| New Pending Sales | 0 | 0 | N/A |
| New Listings | 0 | 2 | -100.0% |
| Pending Inventory | 0 | 0 | N/A |
| Inventory (Active Listings) | 1 | 4 | -75.0% |
| Months Supply of Inventory | 2.0 | 6.0 | -66.7% |



Produced by Florida REALTORS® with data provided by Florida's multiple listing services. Statistics for each month compiled from MLS feeds on the 15th day of the following month. Data released on Wednesday, July 22, 2020. Next data release is Friday, August 21, 2020.

Monthly Distressed Market - June 2020

Townhouses and Condos

Okeechobee County



| | | June 2020 | June 2019 | Percent Change Year-over-Year |
|-----------------|-------------------|------------|------------|-------------------------------|
| Traditional | Closed Sales | 2 | 0 | N/A |
| | Median Sale Price | \$57,500 | (No Sales) | N/A |
| Foreclosure/REO | Closed Sales | 0 | 0 | N/A |
| | Median Sale Price | (No Sales) | (No Sales) | N/A |
| Short Sale | Closed Sales | 0 | 0 | N/A |
| | Median Sale Price | (No Sales) | (No Sales) | N/A |

