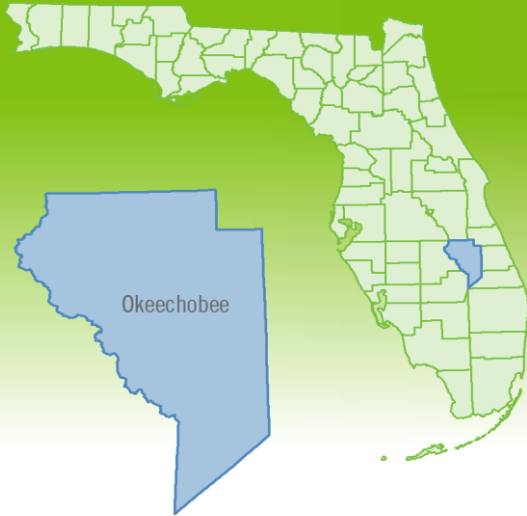


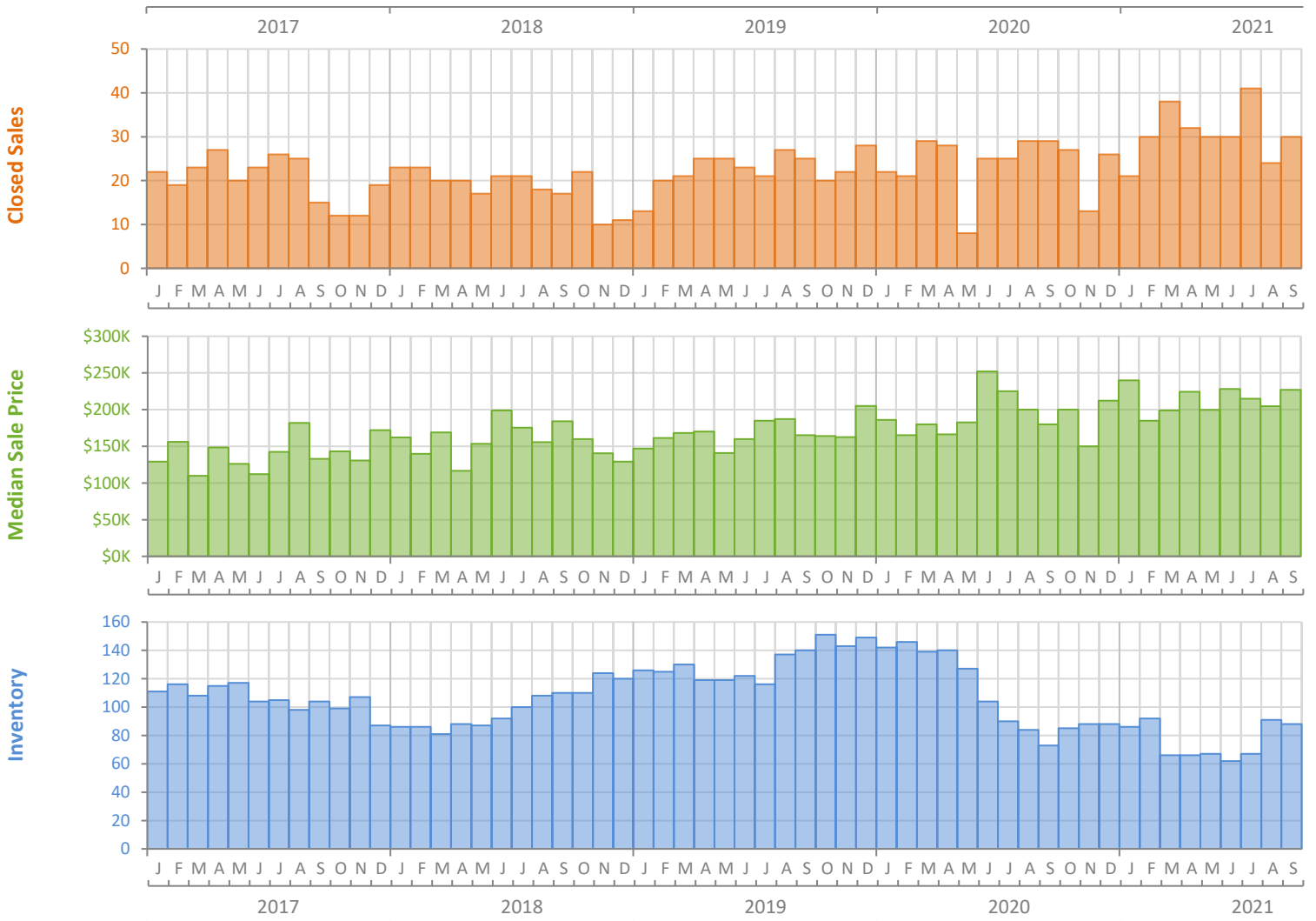
# Monthly Market Summary - September 2021

## Single-Family Homes

### Okeechobee County



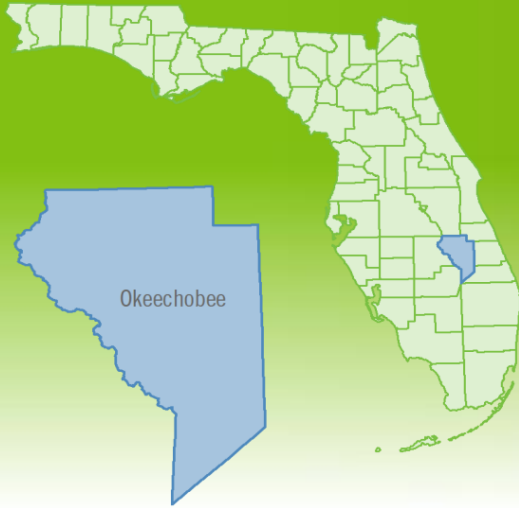
|  | September 2021 | September 2020 | Percent Change Year-over-Year |
|--|----------------|----------------|-------------------------------|
| Closed Sales                           | 30             | 29             | 3.4%                          |
| Paid in Cash                           | 7              | 5              | 40.0%                         |
| Median Sale Price                      | \$227,000      | \$180,000      | 26.1%                         |
| Average Sale Price                     | \$236,267      | \$201,183      | 17.4%                         |
| Dollar Volume                          | \$7.1 Million  | \$5.8 Million  | 21.5%                         |
| Med. Pct. of Orig. List Price Received | 98.5%          | 95.4%          | 3.2%                          |
| Median Time to Contract                | 9 Days         | 28 Days        | -67.9%                        |
| Median Time to Sale                    | 58 Days        | 74 Days        | -21.6%                        |
| New Pending Sales                      | 34             | 29             | 17.2%                         |
| New Listings                           | 33             | 20             | 65.0%                         |
| Pending Inventory                      | 43             | 50             | -14.0%                        |
| Inventory (Active Listings)            | 88             | 73             | 20.5%                         |
| Months Supply of Inventory             | 3.1            | 3.1            | 0.0%                          |



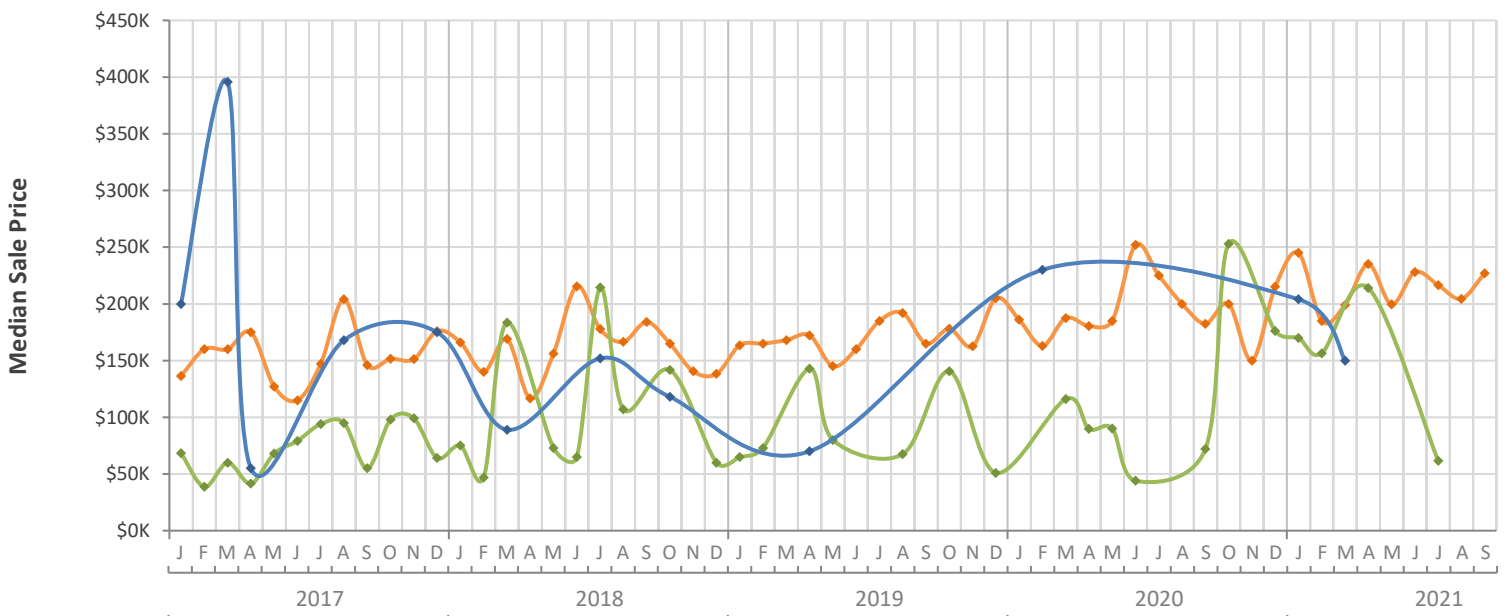
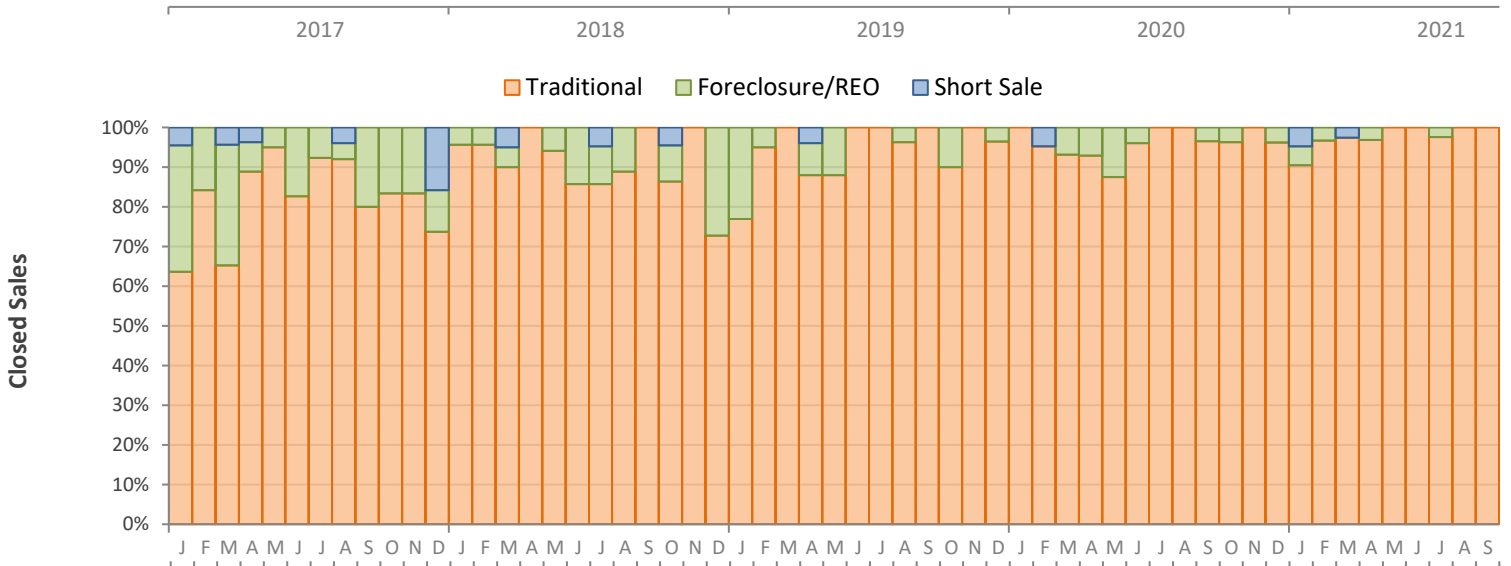
# Monthly Distressed Market - September 2021

## Single-Family Homes

### Okeechobee County



|                 |                   | September 2021 | September 2020 | Percent Change Year-over-Year |
|-----------------|-------------------|----------------|----------------|-------------------------------|
| Traditional     | Closed Sales      | 30             | 28             | 7.1%                          |
|                 | Median Sale Price | \$227,000      | \$182,500      | 24.4%                         |
| Foreclosure/REO | Closed Sales      | 0              | 1              | -100.0%                       |
|                 | Median Sale Price | (No Sales)     | \$72,000       | N/A                           |
| Short Sale      | Closed Sales      | 0              | 0              | N/A                           |
|                 | Median Sale Price | (No Sales)     | (No Sales)     | N/A                           |



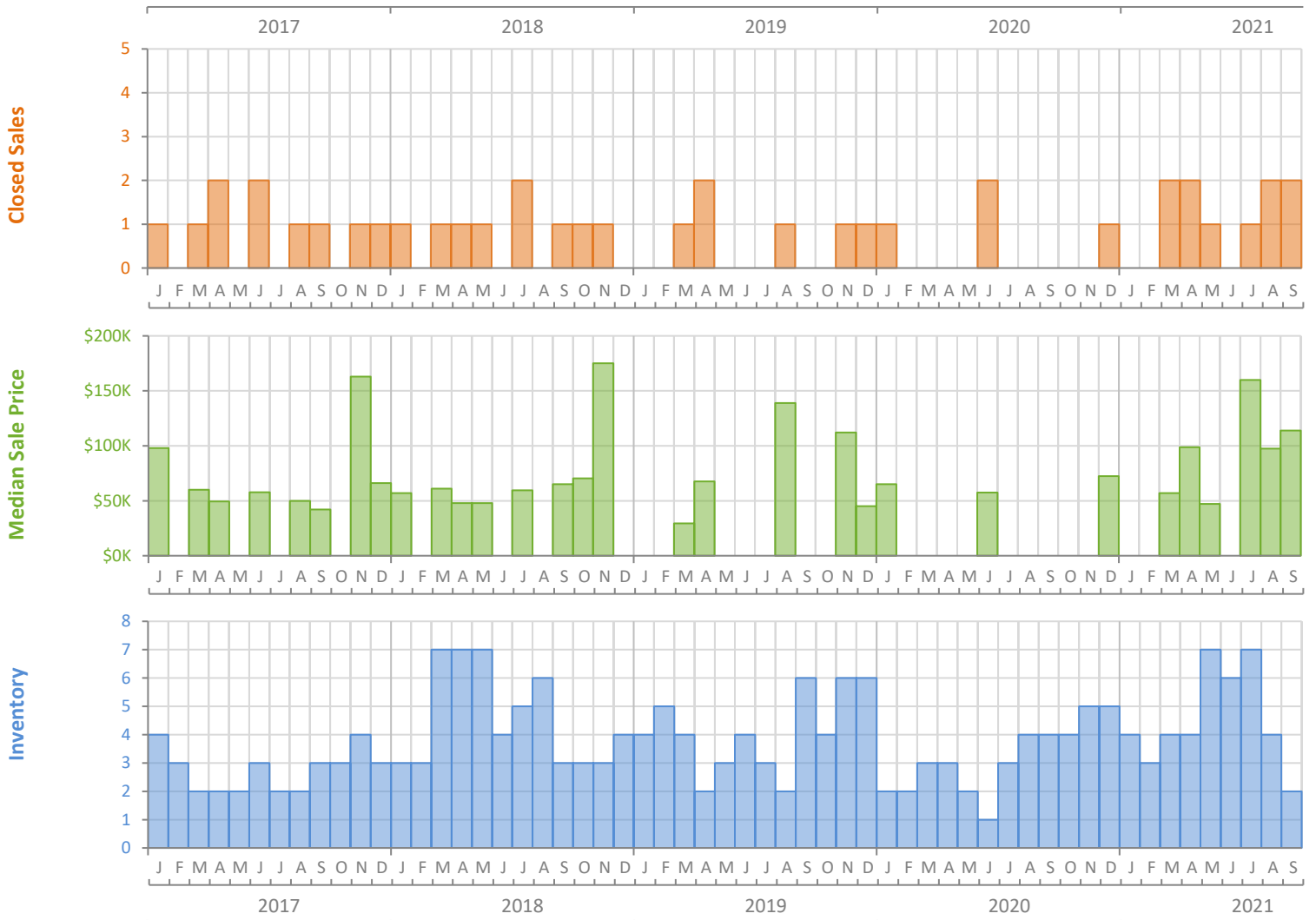
# Monthly Market Summary - September 2021

## Townhouses and Condos

### Okeechobee County



|  | September 2021 | September 2020 | Percent Change Year-over-Year |
|--|----------------|----------------|-------------------------------|
| Closed Sales                           | 2              | 0              | N/A                           |
| Paid in Cash                           | 1              | 0              | N/A                           |
| Median Sale Price                      | \$114,000      | (No Sales)     | N/A                           |
| Average Sale Price                     | \$114,000      | (No Sales)     | N/A                           |
| Dollar Volume                          | \$228,000      | \$0            | N/A                           |
| Med. Pct. of Orig. List Price Received | 100.9%         | (No Sales)     | N/A                           |
| Median Time to Contract                | 47 Days        | (No Sales)     | N/A                           |
| Median Time to Sale                    | 86 Days        | (No Sales)     | N/A                           |
| New Pending Sales                      | 3              | 0              | N/A                           |
| New Listings                           | 1              | 0              | N/A                           |
| Pending Inventory                      | 4              | 0              | N/A                           |
| Inventory (Active Listings)            | 2              | 4              | -50.0%                        |
| Months Supply of Inventory             | 2.2            | 9.6            | -77.1%                        |



# Monthly Distressed Market - September 2021

## Townhouses and Condos

### Okeechobee County



|                 |                   | September 2021 | September 2020 | Percent Change Year-over-Year |
|-----------------|-------------------|----------------|----------------|-------------------------------|
| Traditional     | Closed Sales      | 2              | 0              | N/A                           |
|                 | Median Sale Price | \$114,000      | (No Sales)     | N/A                           |
| Foreclosure/REO | Closed Sales      | 0              | 0              | N/A                           |
|                 | Median Sale Price | (No Sales)     | (No Sales)     | N/A                           |
| Short Sale      | Closed Sales      | 0              | 0              | N/A                           |
|                 | Median Sale Price | (No Sales)     | (No Sales)     | N/A                           |

