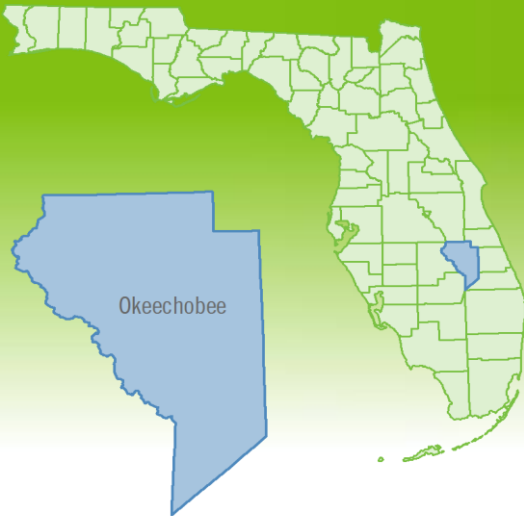


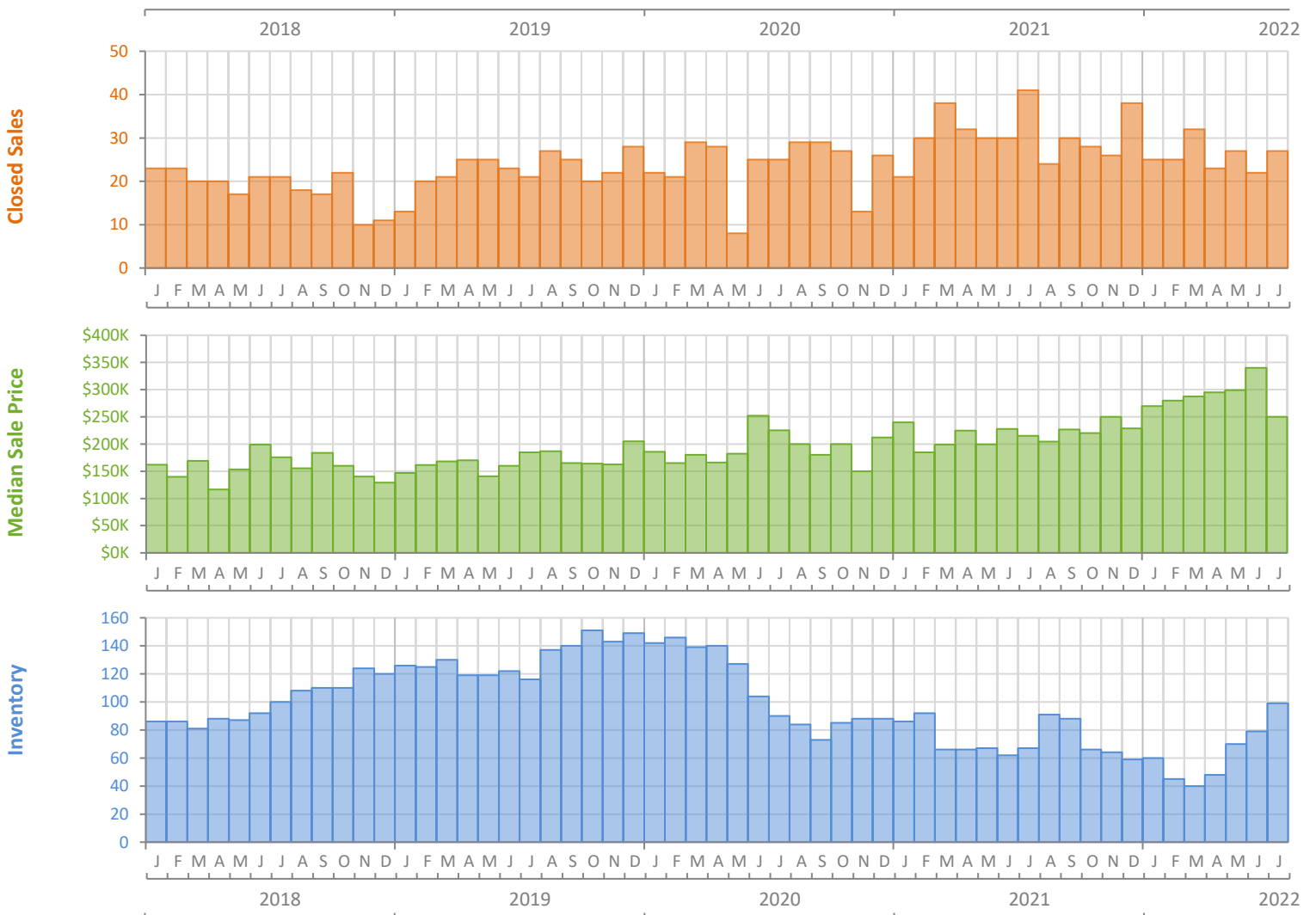
Monthly Market Summary - July 2022

Single-Family Homes

Okeechobee County



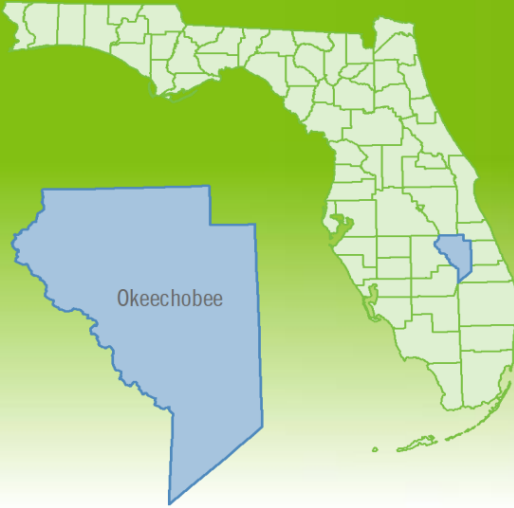
| | July 2022 | July 2021 | Percent Change Year-over-Year |
|--|---------------|----------------|-------------------------------|
| Closed Sales | 27 | 41 | -34.1% |
| Paid in Cash | 7 | 10 | -30.0% |
| Median Sale Price | \$250,000 | \$215,000 | 16.3% |
| Average Sale Price | \$256,456 | \$277,537 | -7.6% |
| Dollar Volume | \$6.9 Million | \$11.4 Million | -39.1% |
| Med. Pct. of Orig. List Price Received | 95.7% | 97.5% | -1.8% |
| Median Time to Contract | 16 Days | 26 Days | -38.5% |
| Median Time to Sale | 53 Days | 83 Days | -36.1% |
| New Pending Sales | 37 | 34 | 8.8% |
| New Listings | 53 | 37 | 43.2% |
| Pending Inventory | 52 | 51 | 2.0% |
| Inventory (Active Listings) | 99 | 67 | 47.8% |
| Months Supply of Inventory | 3.6 | 2.3 | 56.5% |



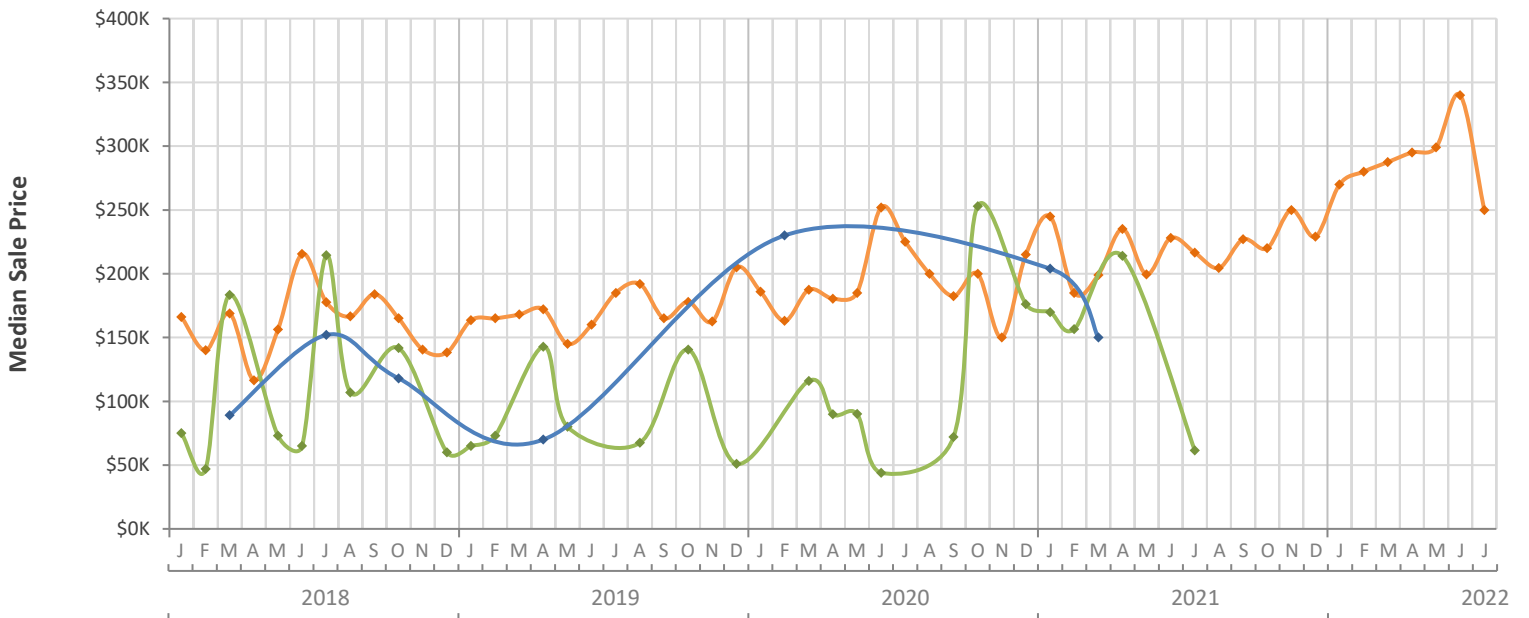
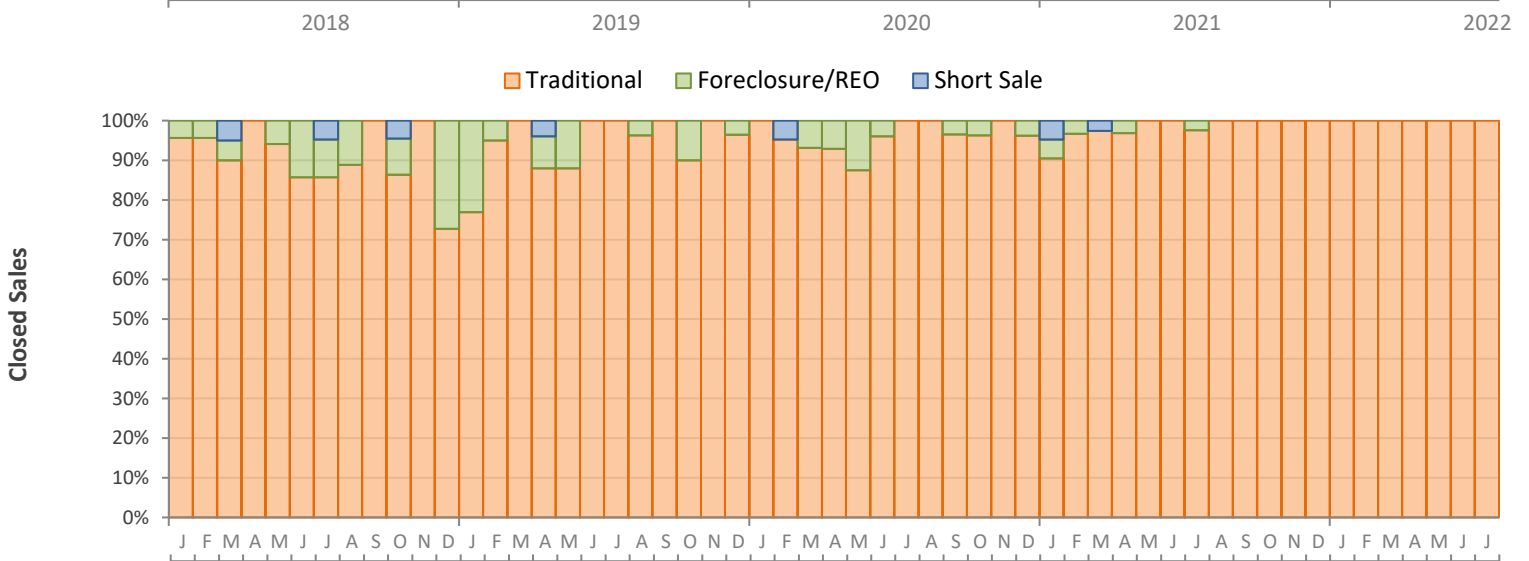
Monthly Distressed Market - July 2022

Single-Family Homes

Okeechobee County



| | | July 2022 | July 2021 | Percent Change Year-over-Year |
|-----------------|-------------------|------------|------------|-------------------------------|
| Traditional | Closed Sales | 27 | 40 | -32.5% |
| | Median Sale Price | \$250,000 | \$216,500 | 15.5% |
| Foreclosure/REO | Closed Sales | 0 | 1 | -100.0% |
| | Median Sale Price | (No Sales) | \$61,500 | N/A |
| Short Sale | Closed Sales | 0 | 0 | N/A |
| | Median Sale Price | (No Sales) | (No Sales) | N/A |



Monthly Market Summary - July 2022

Townhouses and Condos

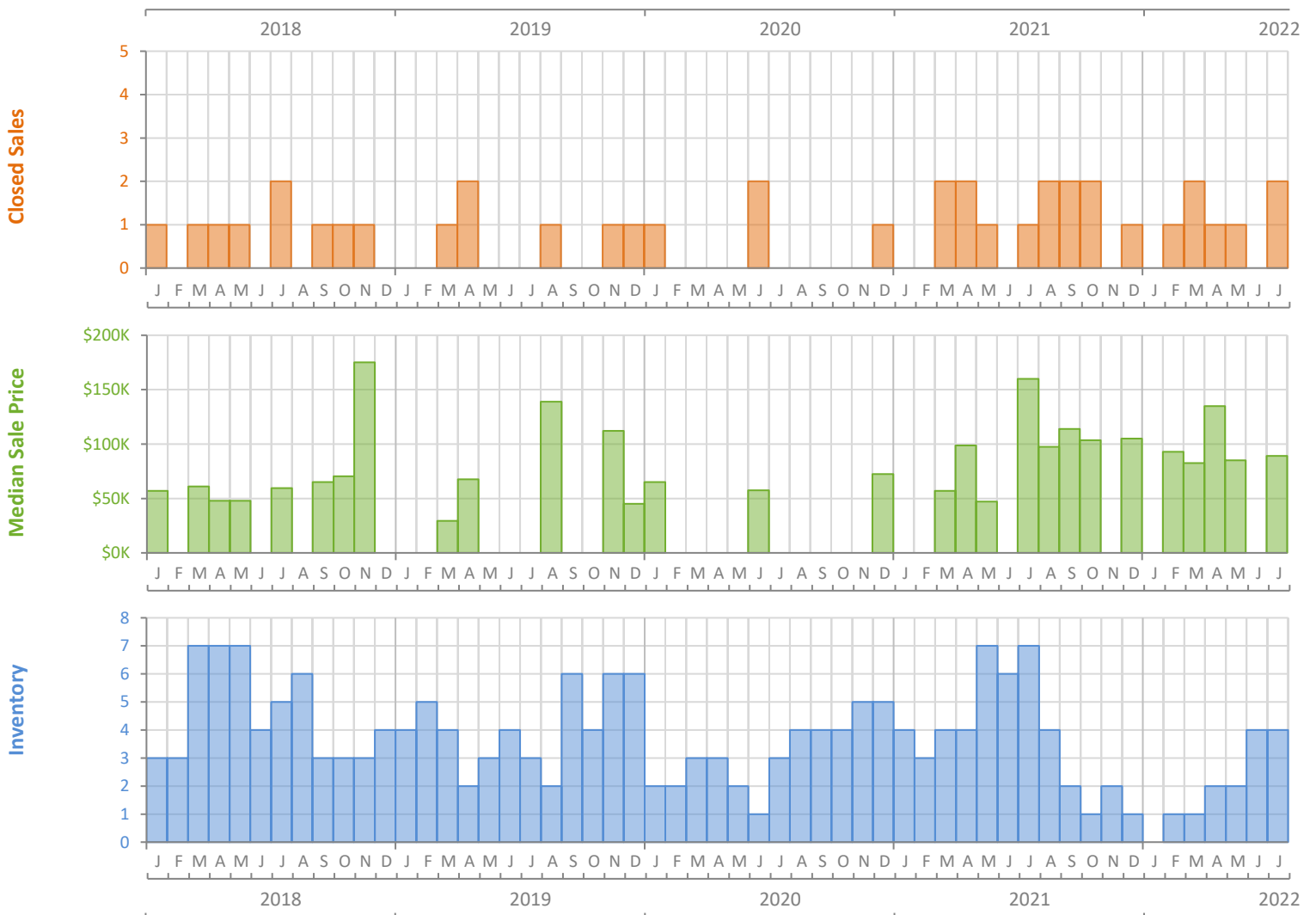
Okeechobee County



FloridaRealtors®
The Voice for Real Estate® in Florida



| | July 2022 | July 2021 | Percent Change Year-over-Year |
|--|-----------|-----------|-------------------------------|
| Closed Sales | 2 | 1 | 100.0% |
| Paid in Cash | 1 | 1 | 0.0% |
| Median Sale Price | \$89,000 | \$160,000 | -44.4% |
| Average Sale Price | \$89,000 | \$160,000 | -44.4% |
| Dollar Volume | \$178,000 | \$160,000 | 11.3% |
| Med. Pct. of Orig. List Price Received | 90.0% | 114.3% | -21.3% |
| Median Time to Contract | 38 Days | 37 Days | 2.7% |
| Median Time to Sale | 77 Days | 63 Days | 22.2% |
| New Pending Sales | 3 | 3 | 0.0% |
| New Listings | 3 | 2 | 50.0% |
| Pending Inventory | 2 | 3 | -33.3% |
| Inventory (Active Listings) | 4 | 7 | -42.9% |
| Months Supply of Inventory | 3.4 | 12.0 | -71.7% |



Monthly Distressed Market - July 2022

Townhouses and Condos

Okeechobee County



| | | July 2022 | July 2021 | Percent Change Year-over-Year |
|-----------------|-------------------|------------|------------|-------------------------------|
| Traditional | Closed Sales | 2 | 1 | 100.0% |
| | Median Sale Price | \$89,000 | \$160,000 | -44.4% |
| Foreclosure/REO | Closed Sales | 0 | 0 | N/A |
| | Median Sale Price | (No Sales) | (No Sales) | N/A |
| Short Sale | Closed Sales | 0 | 0 | N/A |
| | Median Sale Price | (No Sales) | (No Sales) | N/A |

