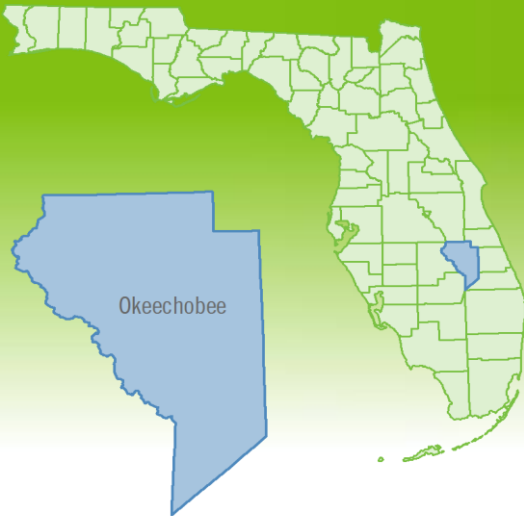


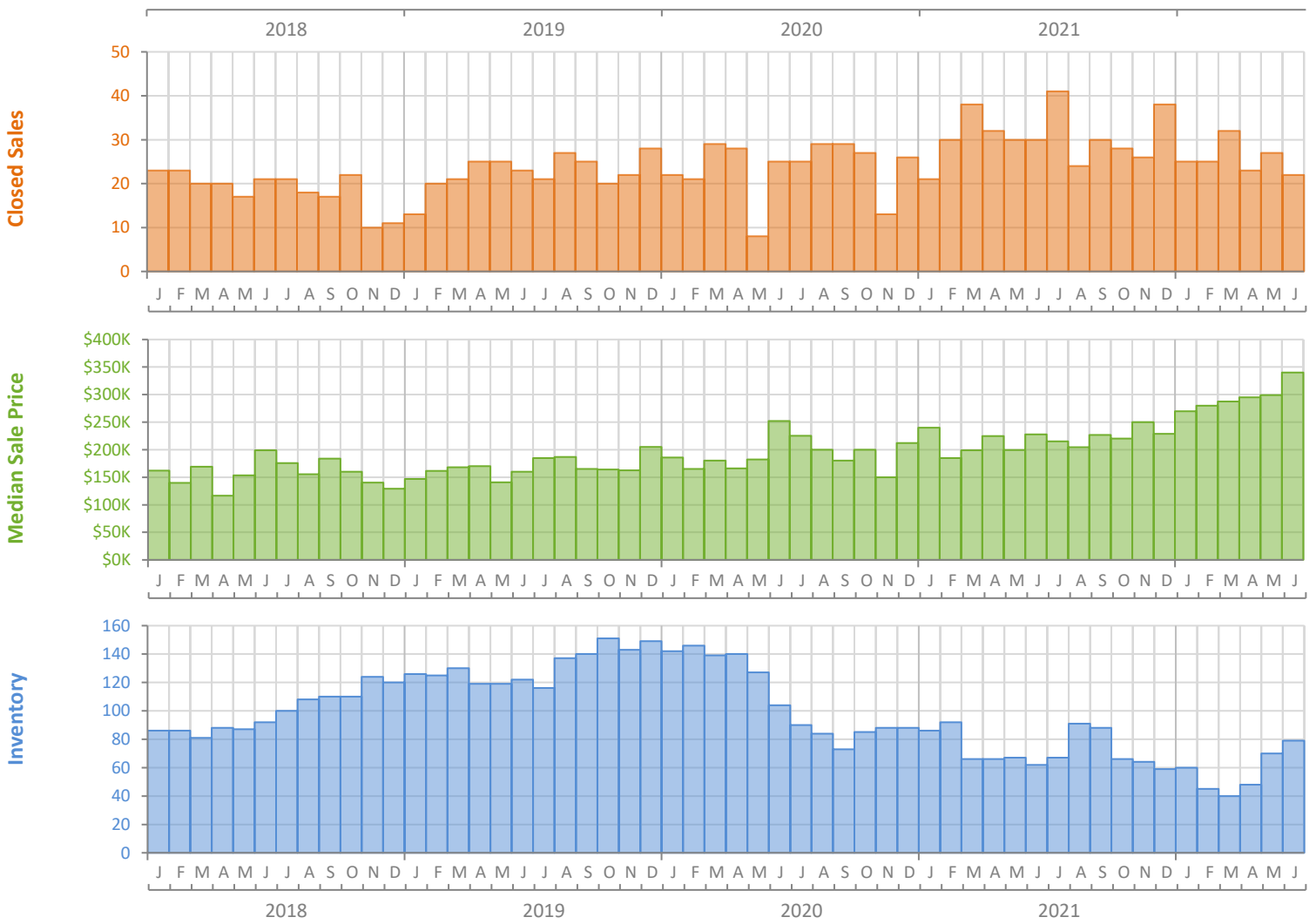
Monthly Market Summary - June 2022

Single-Family Homes

Okeechobee County



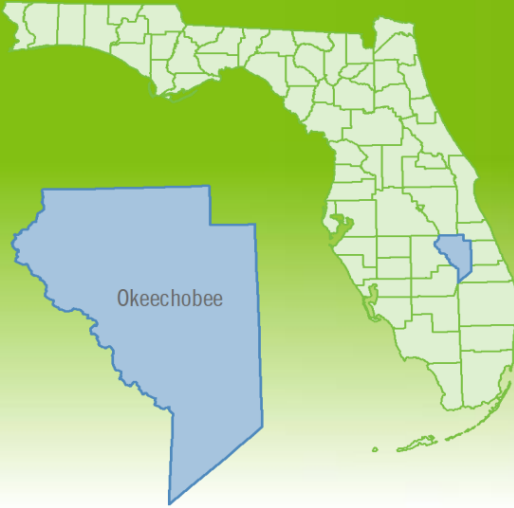
	June 2022	June 2021	Percent Change Year-over-Year
Closed Sales	22	30	-26.7%
Paid in Cash	8	10	-20.0%
Median Sale Price	\$340,000	\$228,000	49.1%
Average Sale Price	\$428,136	\$885,443	-51.6%
Dollar Volume	\$9.4 Million	\$26.6 Million	-64.5%
Med. Pct. of Orig. List Price Received	96.8%	99.9%	-3.1%
Median Time to Contract	19 Days	22 Days	-13.6%
Median Time to Sale	84 Days	78 Days	7.7%
New Pending Sales	36	35	2.9%
New Listings	49	36	36.1%
Pending Inventory	48	68	-29.4%
Inventory (Active Listings)	79	62	27.4%
Months Supply of Inventory	2.8	2.3	21.7%



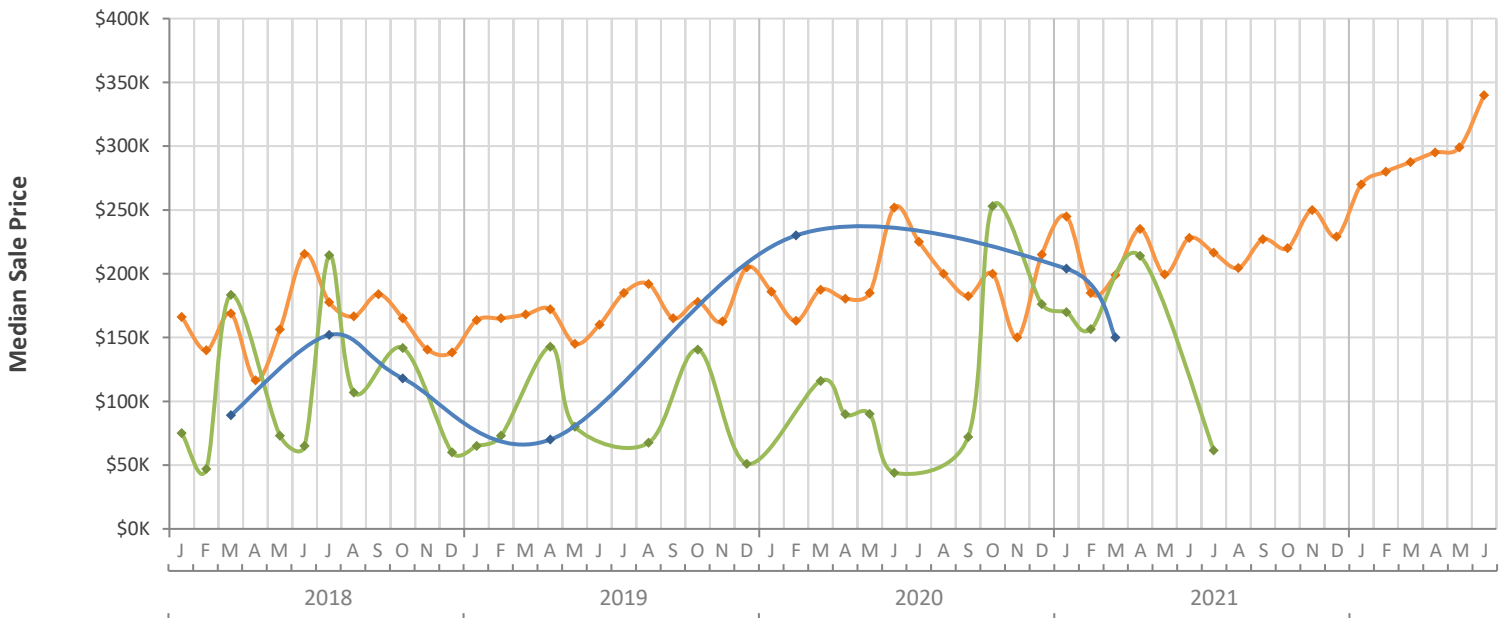
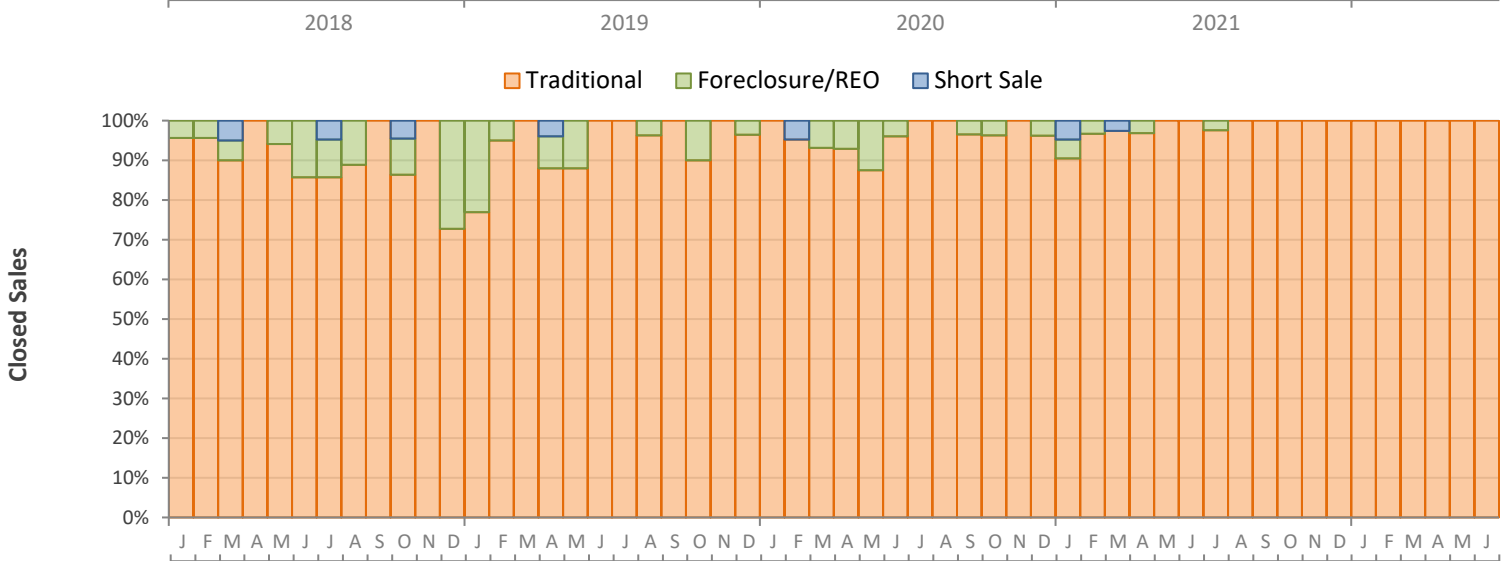
Monthly Distressed Market - June 2022

Single-Family Homes

Okeechobee County



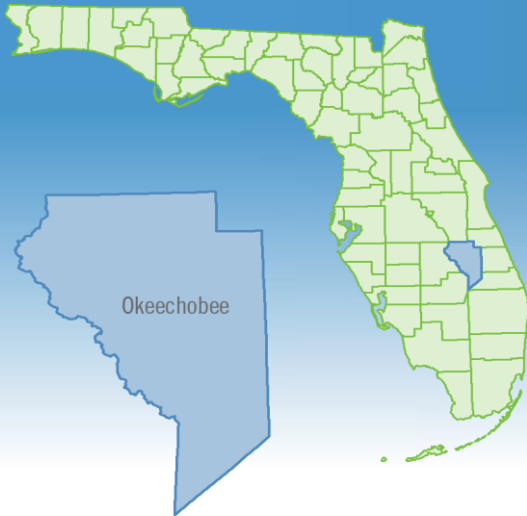
		June 2022	June 2021	Percent Change Year-over-Year
Traditional	Closed Sales	22	30	-26.7%
	Median Sale Price	\$340,000	\$228,000	49.1%
Foreclosure/REO	Closed Sales	0	0	N/A
	Median Sale Price	(No Sales)	(No Sales)	N/A
Short Sale	Closed Sales	0	0	N/A
	Median Sale Price	(No Sales)	(No Sales)	N/A



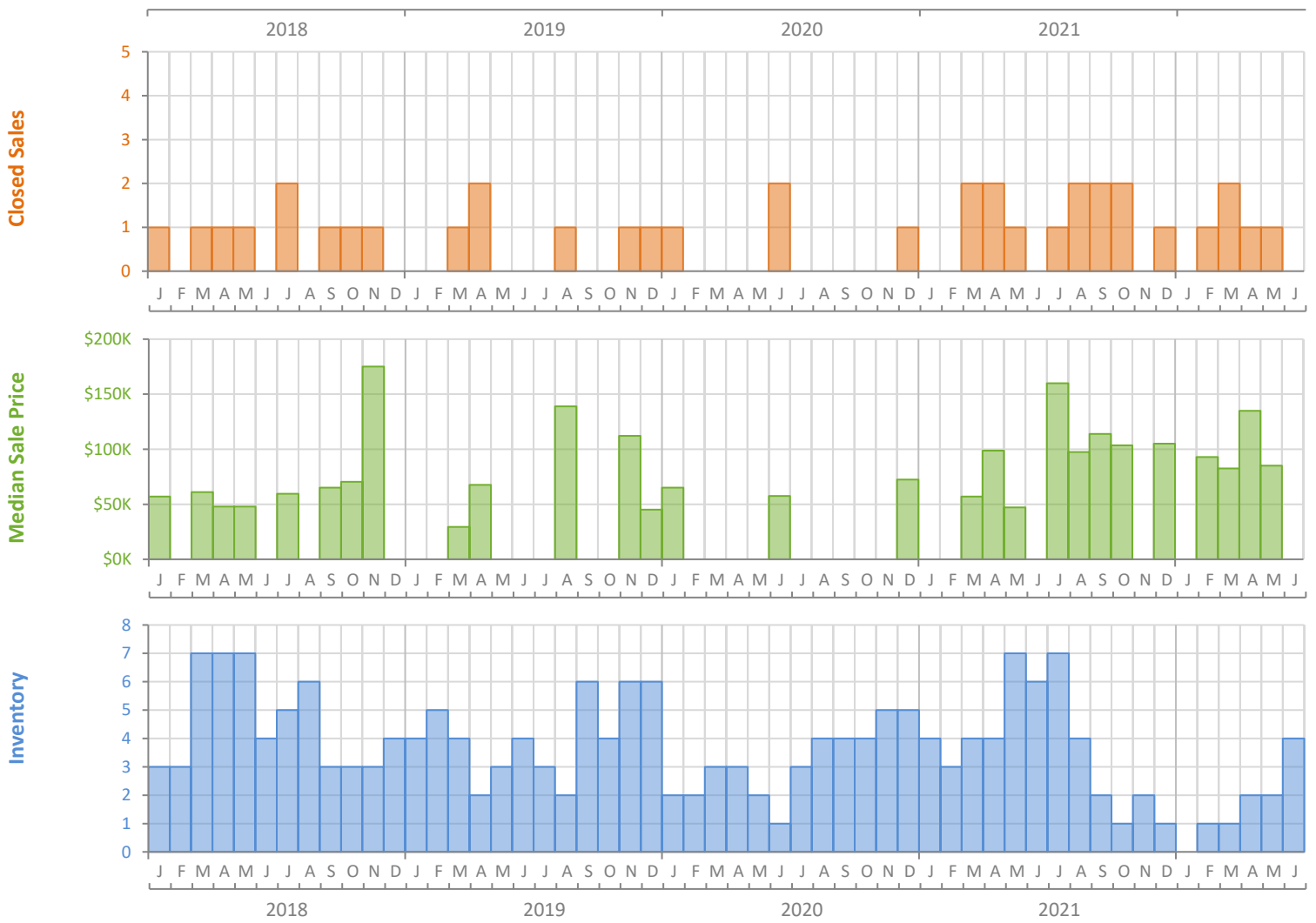
Monthly Market Summary - June 2022

Townhouses and Condos

Okeechobee County



	June 2022	June 2021	Percent Change Year-over-Year
Closed Sales	0	0	N/A
Paid in Cash	0	0	N/A
Median Sale Price	(No Sales)	(No Sales)	N/A
Average Sale Price	(No Sales)	(No Sales)	N/A
Dollar Volume	\$0	\$0	N/A
Med. Pct. of Orig. List Price Received	(No Sales)	(No Sales)	N/A
Median Time to Contract	(No Sales)	(No Sales)	N/A
Median Time to Sale	(No Sales)	(No Sales)	N/A
New Pending Sales	0	1	-100.0%
New Listings	2	0	N/A
Pending Inventory	2	1	100.0%
Inventory (Active Listings)	4	6	-33.3%
Months Supply of Inventory	3.7	14.4	-74.3%



Produced by Florida REALTORS® with data provided by Florida's multiple listing services. Statistics for each month compiled from MLS feeds on the 15th day of the following month. Data released on Wednesday, July 20, 2022. Next data release is Thursday, August 18, 2022.

Monthly Distressed Market - June 2022

Townhouses and Condos

Okeechobee County



		June 2022	June 2021	Percent Change Year-over-Year
Traditional	Closed Sales	0	0	N/A
	Median Sale Price	(No Sales)	(No Sales)	N/A
Foreclosure/REO	Closed Sales	0	0	N/A
	Median Sale Price	(No Sales)	(No Sales)	N/A
Short Sale	Closed Sales	0	0	N/A
	Median Sale Price	(No Sales)	(No Sales)	N/A

