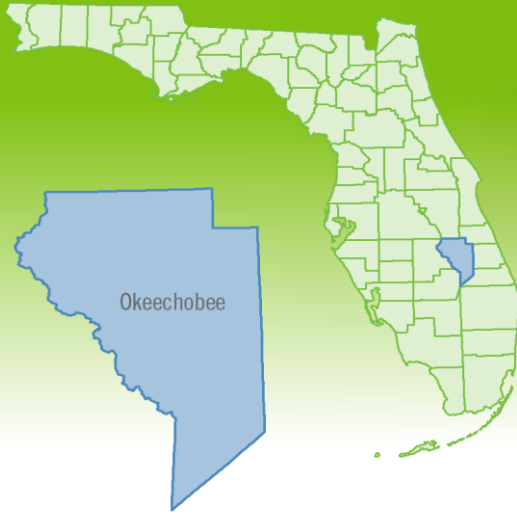


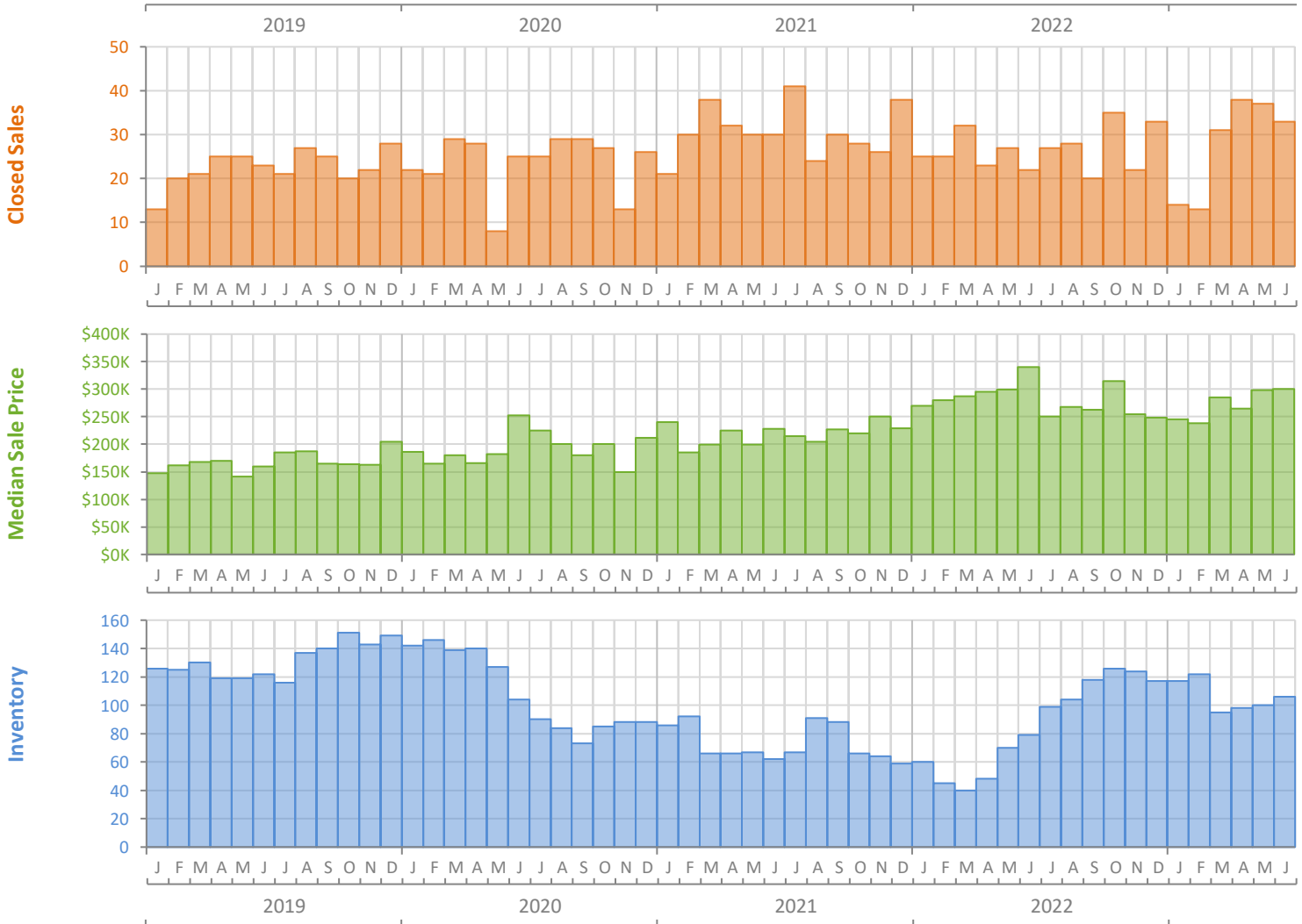
Monthly Market Summary - June 2023

Single-Family Homes

Okeechobee County



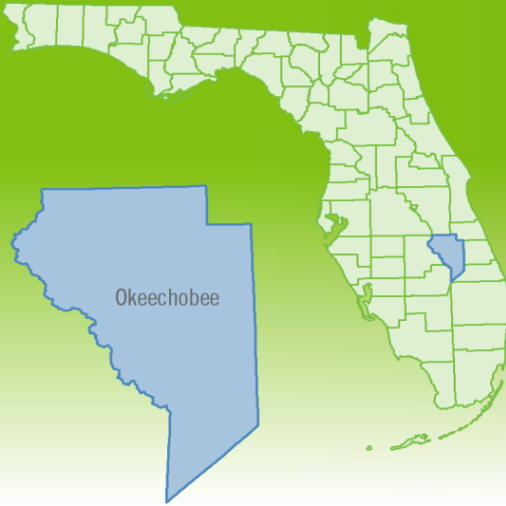
	June 2023	June 2022	Percent Change Year-over-Year
Closed Sales	33	22	50.0%
Paid in Cash	10	8	25.0%
Median Sale Price	\$300,000	\$340,000	-11.8%
Average Sale Price	\$318,500	\$428,136	-25.6%
Dollar Volume	\$10.5 Million	\$9.4 Million	11.6%
Med. Pct. of Orig. List Price Received	92.8%	96.8%	-4.1%
Median Time to Contract	40 Days	19 Days	110.5%
Median Time to Sale	73 Days	84 Days	-13.1%
New Pending Sales	28	36	-22.2%
New Listings	34	49	-30.6%
Pending Inventory	36	48	-25.0%
Inventory (Active Listings)	106	79	34.2%
Months Supply of Inventory	3.8	2.8	35.7%



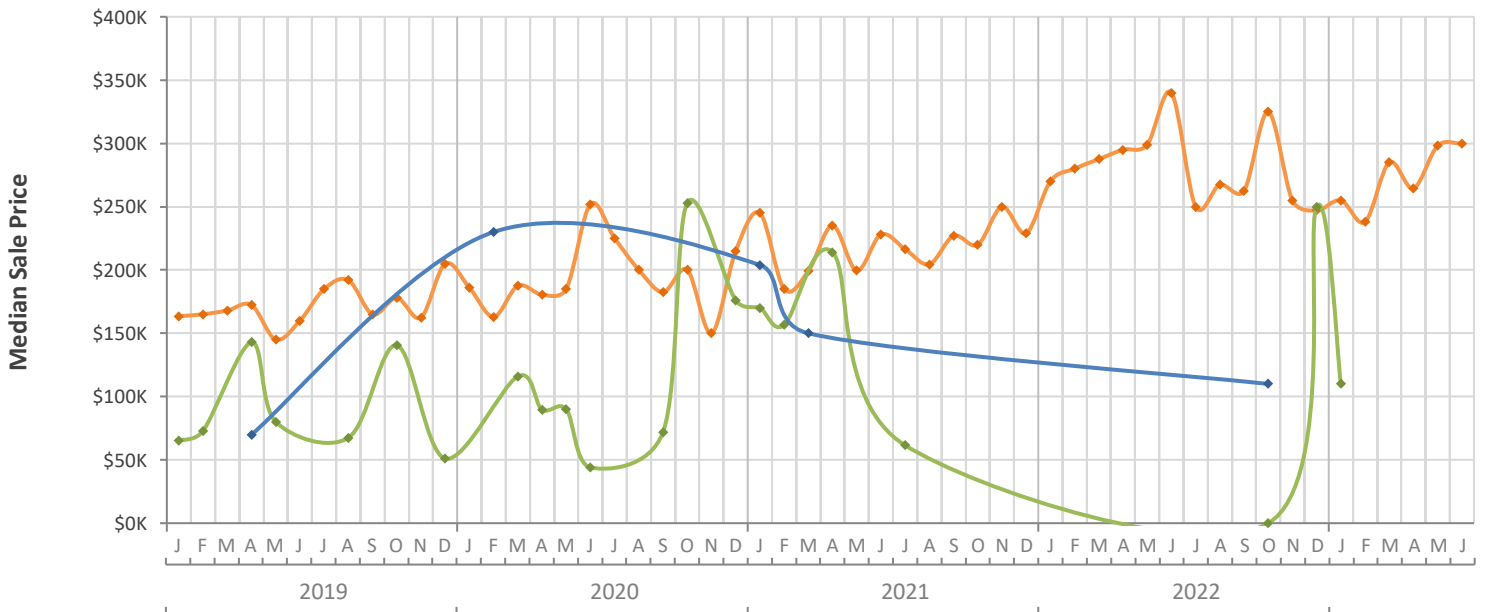
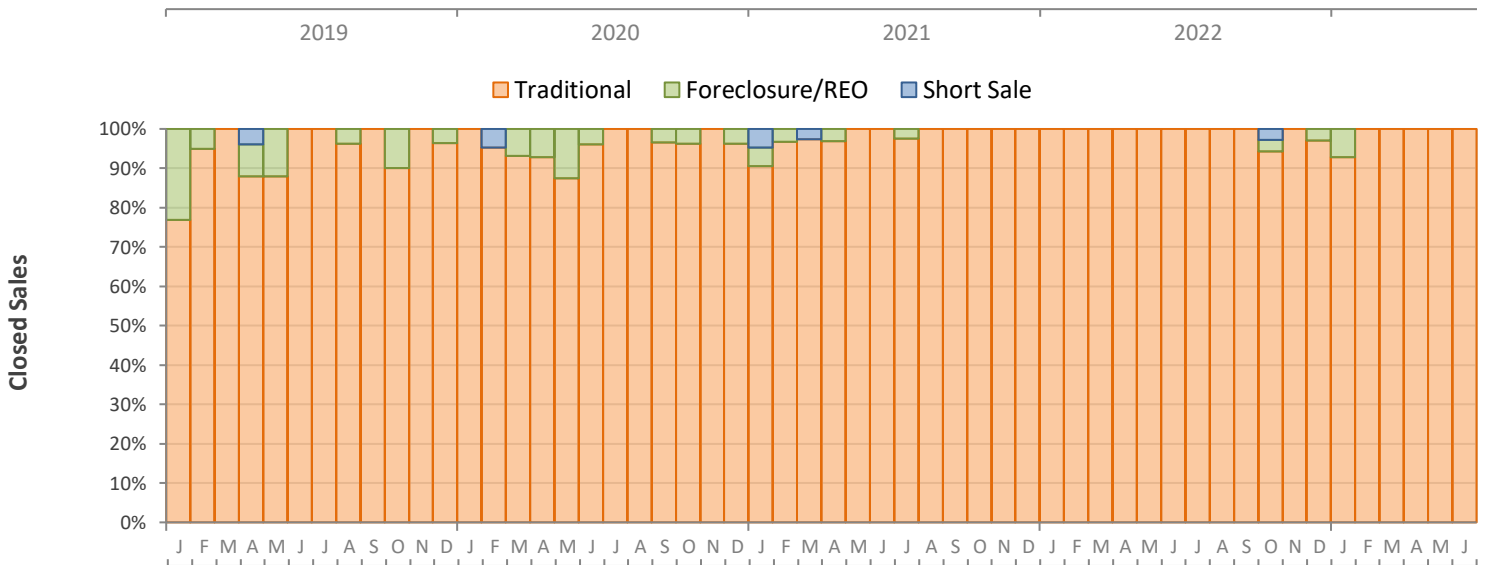
Monthly Distressed Market - June 2023

Single-Family Homes

Okeechobee County



		June 2023	June 2022	Percent Change Year-over-Year
Traditional	Closed Sales	33	22	50.0%
	Median Sale Price	\$300,000	\$340,000	-11.8%
Foreclosure/REO	Closed Sales	0	0	N/A
	Median Sale Price	(No Sales)	(No Sales)	N/A
Short Sale	Closed Sales	0	0	N/A
	Median Sale Price	(No Sales)	(No Sales)	N/A



Produced by Florida REALTORS® with data provided by Florida's multiple listing services. Statistics for each month compiled from MLS feeds on the 15th day of the following month. Data released on Thursday, July 20, 2023. Next data release is Tuesday, August 22, 2023.

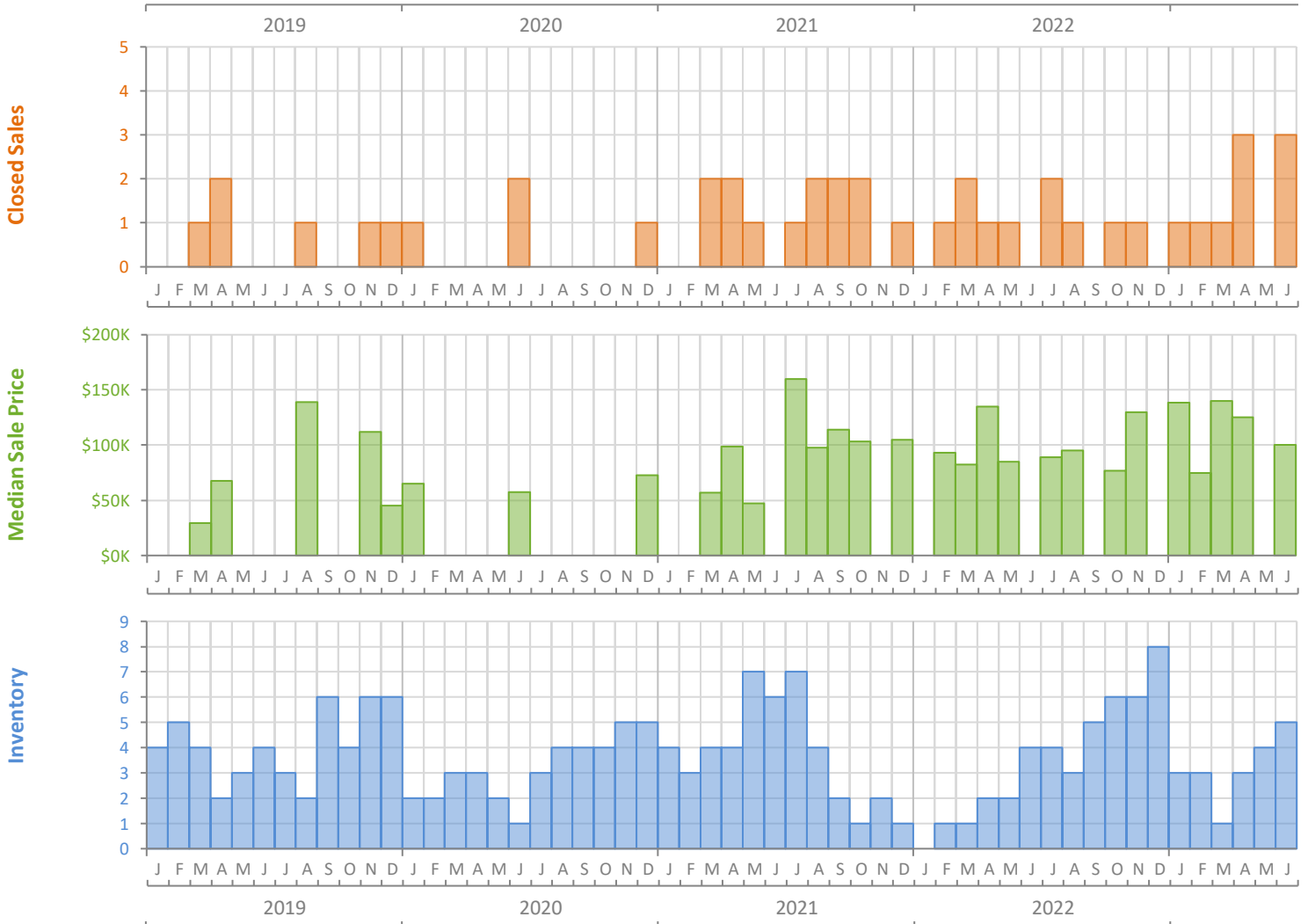
Monthly Market Summary - June 2023

Townhouses and Condos

Okeechobee County



	June 2023	June 2022	Percent Change Year-over-Year
Closed Sales	3	0	N/A
Paid in Cash	2	0	N/A
Median Sale Price	\$100,000	(No Sales)	N/A
Average Sale Price	\$110,000	(No Sales)	N/A
Dollar Volume	\$330,000	\$0	N/A
Med. Pct. of Orig. List Price Received	100.0%	(No Sales)	N/A
Median Time to Contract	8 Days	(No Sales)	N/A
Median Time to Sale	64 Days	(No Sales)	N/A
New Pending Sales	2	0	N/A
New Listings	3	2	50.0%
Pending Inventory	1	2	-50.0%
Inventory (Active Listings)	5	4	25.0%
Months Supply of Inventory	4.3	3.7	16.2%



Monthly Distressed Market - June 2023

Townhouses and Condos

Okeechobee County



		June 2023	June 2022	Percent Change Year-over-Year
Traditional	Closed Sales	3	0	N/A
	Median Sale Price	\$100,000	(No Sales)	N/A
Foreclosure/REO	Closed Sales	0	0	N/A
	Median Sale Price	(No Sales)	(No Sales)	N/A
Short Sale	Closed Sales	0	0	N/A
	Median Sale Price	(No Sales)	(No Sales)	N/A

