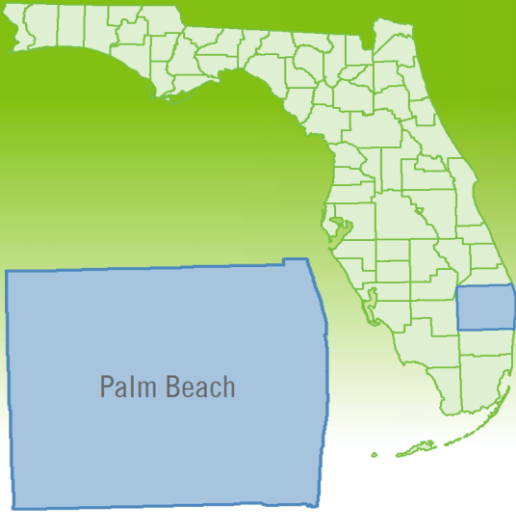


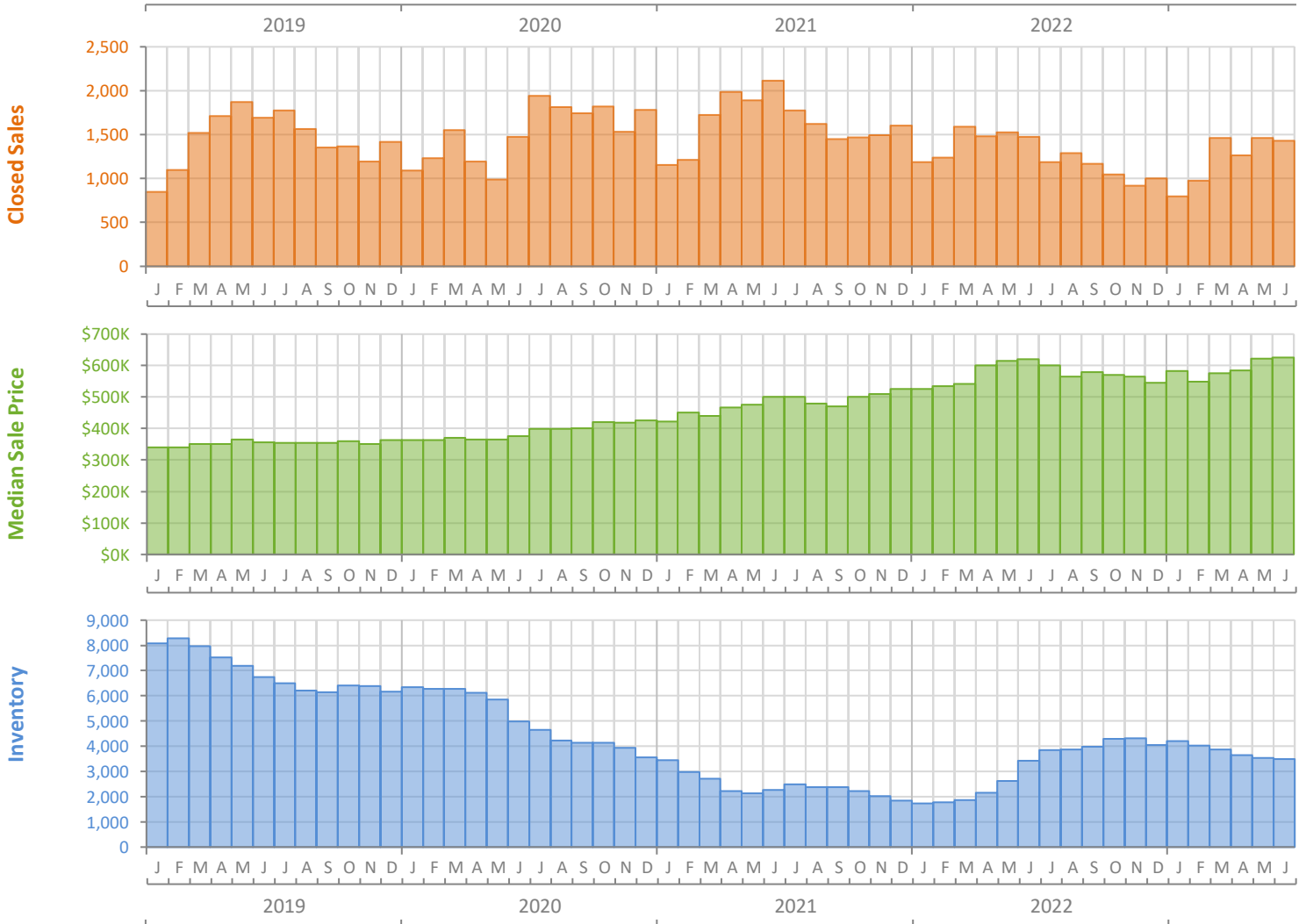
Monthly Market Summary - June 2023

Single-Family Homes

Palm Beach County



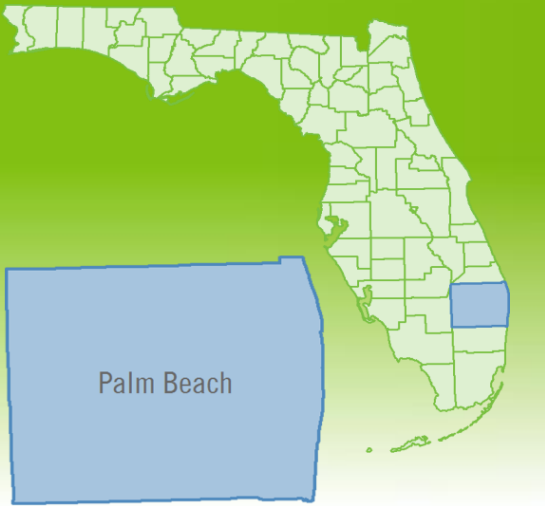
| | June 2023 | June 2022 | Percent Change Year-over-Year |
|----------------------------------------|---------------|---------------|-------------------------------|
| Closed Sales | 1,428 | 1,472 | -3.0% |
| Paid in Cash | 613 | 689 | -11.0% |
| Median Sale Price | \$625,000 | \$620,000 | 0.8% |
| Average Sale Price | \$1,066,235 | \$1,182,748 | -9.9% |
| Dollar Volume | \$1.5 Billion | \$1.7 Billion | -12.5% |
| Med. Pct. of Orig. List Price Received | 95.5% | 100.0% | -4.5% |
| Median Time to Contract | 26 Days | 12 Days | 116.7% |
| Median Time to Sale | 73 Days | 55 Days | 32.7% |
| New Pending Sales | 1,277 | 1,251 | 2.1% |
| New Listings | 1,555 | 2,286 | -32.0% |
| Pending Inventory | 1,925 | 2,151 | -10.5% |
| Inventory (Active Listings) | 3,497 | 3,421 | 2.2% |
| Months Supply of Inventory | 3.0 | 2.3 | 30.4% |



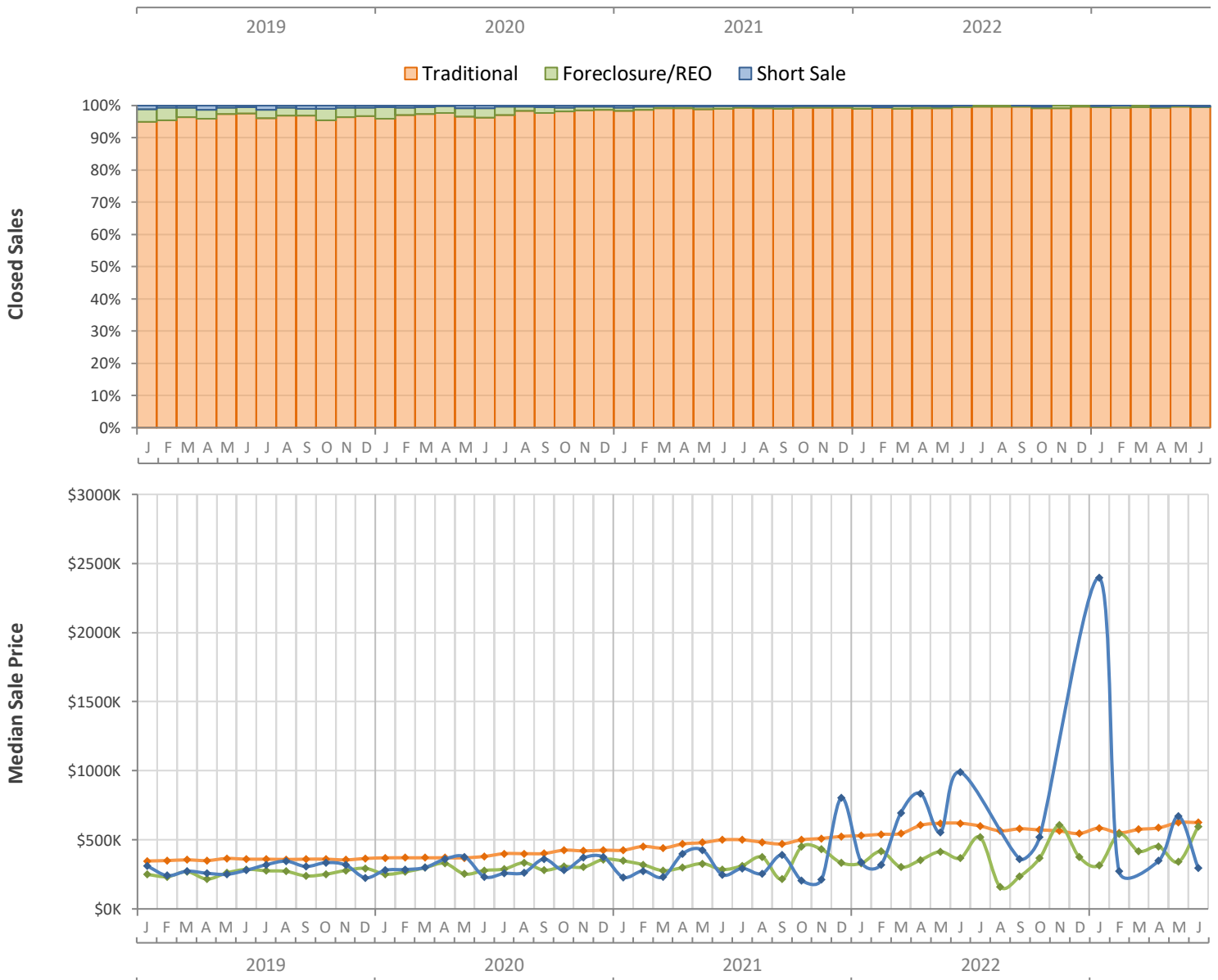
Monthly Distressed Market - June 2023

Single-Family Homes

Palm Beach County



| | | June 2023 | June 2022 | Percent Change Year-over-Year |
|-----------------|-------------------|-----------|-----------|-------------------------------|
| Traditional | Closed Sales | 1,420 | 1,465 | -3.1% |
| | Median Sale Price | \$625,000 | \$620,000 | 0.8% |
| Foreclosure/REO | Closed Sales | 4 | 6 | -33.3% |
| | Median Sale Price | \$596,250 | \$367,500 | 62.2% |
| Short Sale | Closed Sales | 4 | 1 | 300.0% |
| | Median Sale Price | \$294,500 | \$989,900 | -70.2% |



Produced by Florida REALTORS® with data provided by Florida's multiple listing services. Statistics for each month compiled from MLS feeds on the 15th day of the following month. Data released on Thursday, July 20, 2023. Next data release is Tuesday, August 22, 2023.

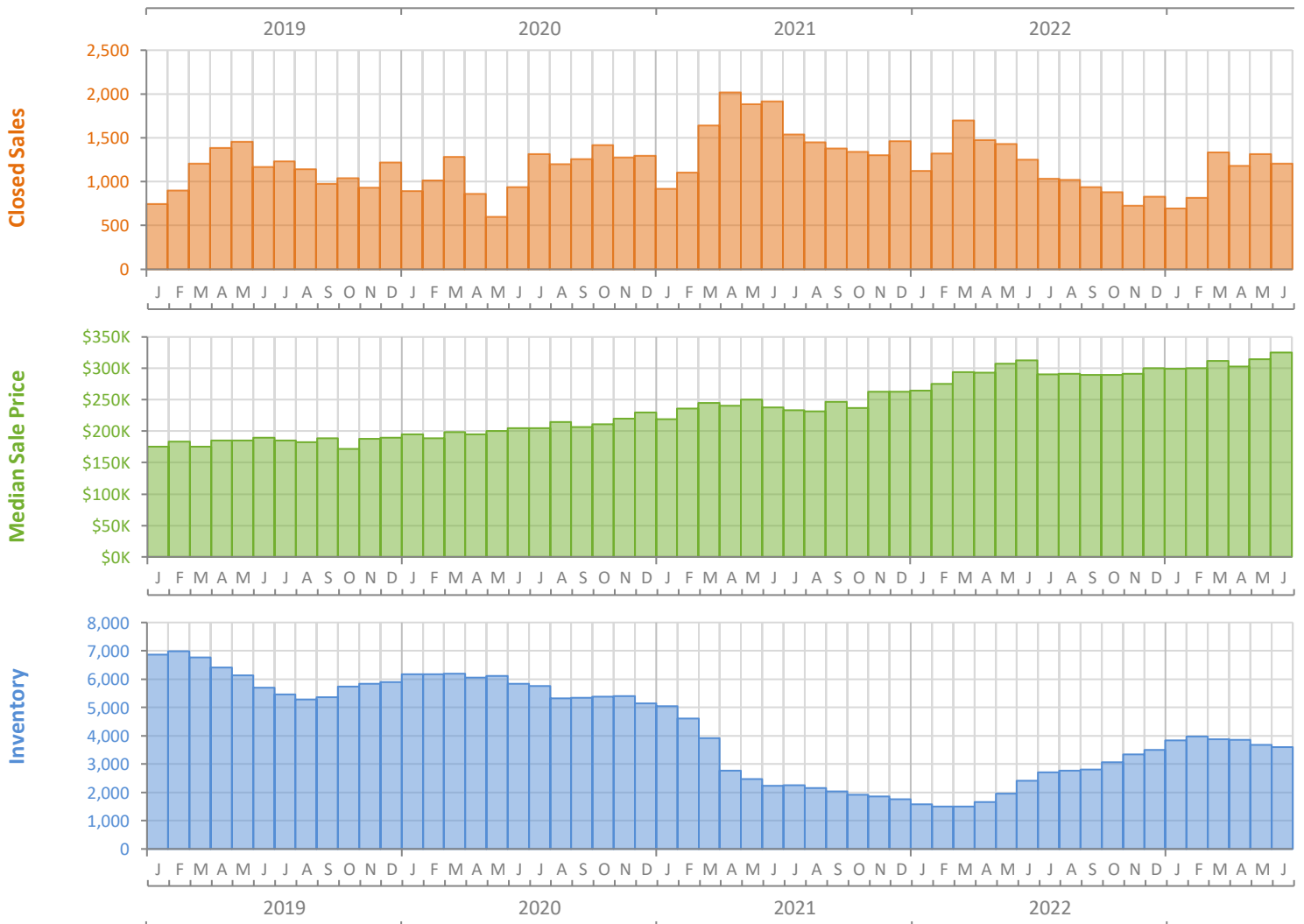
Monthly Market Summary - June 2023

Townhouses and Condos

Palm Beach County



| | June 2023 | June 2022 | Percent Change Year-over-Year |
|----------------------------------------|-----------------|-----------------|-------------------------------|
| Closed Sales | 1,204 | 1,252 | -3.8% |
| Paid in Cash | 739 | 791 | -6.6% |
| Median Sale Price | \$325,000 | \$312,500 | 4.0% |
| Average Sale Price | \$550,437 | \$484,709 | 13.6% |
| Dollar Volume | \$662.7 Million | \$606.9 Million | 9.2% |
| Med. Pct. of Orig. List Price Received | 95.5% | 100.0% | -4.5% |
| Median Time to Contract | 26 Days | 11 Days | 136.4% |
| Median Time to Sale | 71 Days | 51 Days | 39.2% |
| New Pending Sales | 1,083 | 1,152 | -6.0% |
| New Listings | 1,331 | 1,707 | -22.0% |
| Pending Inventory | 1,698 | 1,927 | -11.9% |
| Inventory (Active Listings) | 3,592 | 2,408 | 49.2% |
| Months Supply of Inventory | 3.6 | 1.7 | 111.8% |



Monthly Distressed Market - June 2023

Townhouses and Condos

Palm Beach County



| | | June 2023 | June 2022 | Percent Change Year-over-Year |
|-----------------|-------------------|------------|------------|-------------------------------|
| Traditional | Closed Sales | 1,196 | 1,249 | -4.2% |
| | Median Sale Price | \$326,625 | \$314,500 | 3.9% |
| Foreclosure/REO | Closed Sales | 8 | 3 | 166.7% |
| | Median Sale Price | \$181,250 | \$150,000 | 20.8% |
| Short Sale | Closed Sales | 0 | 0 | N/A |
| | Median Sale Price | (No Sales) | (No Sales) | N/A |

