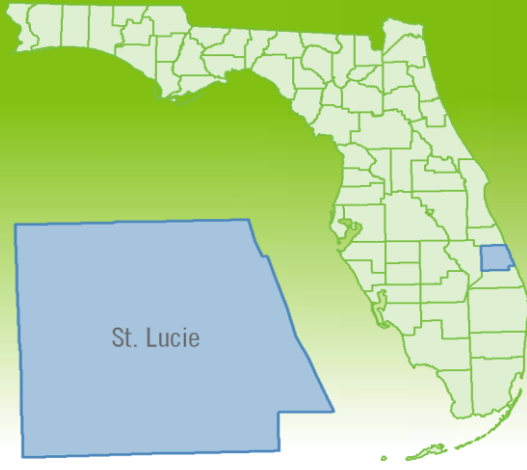


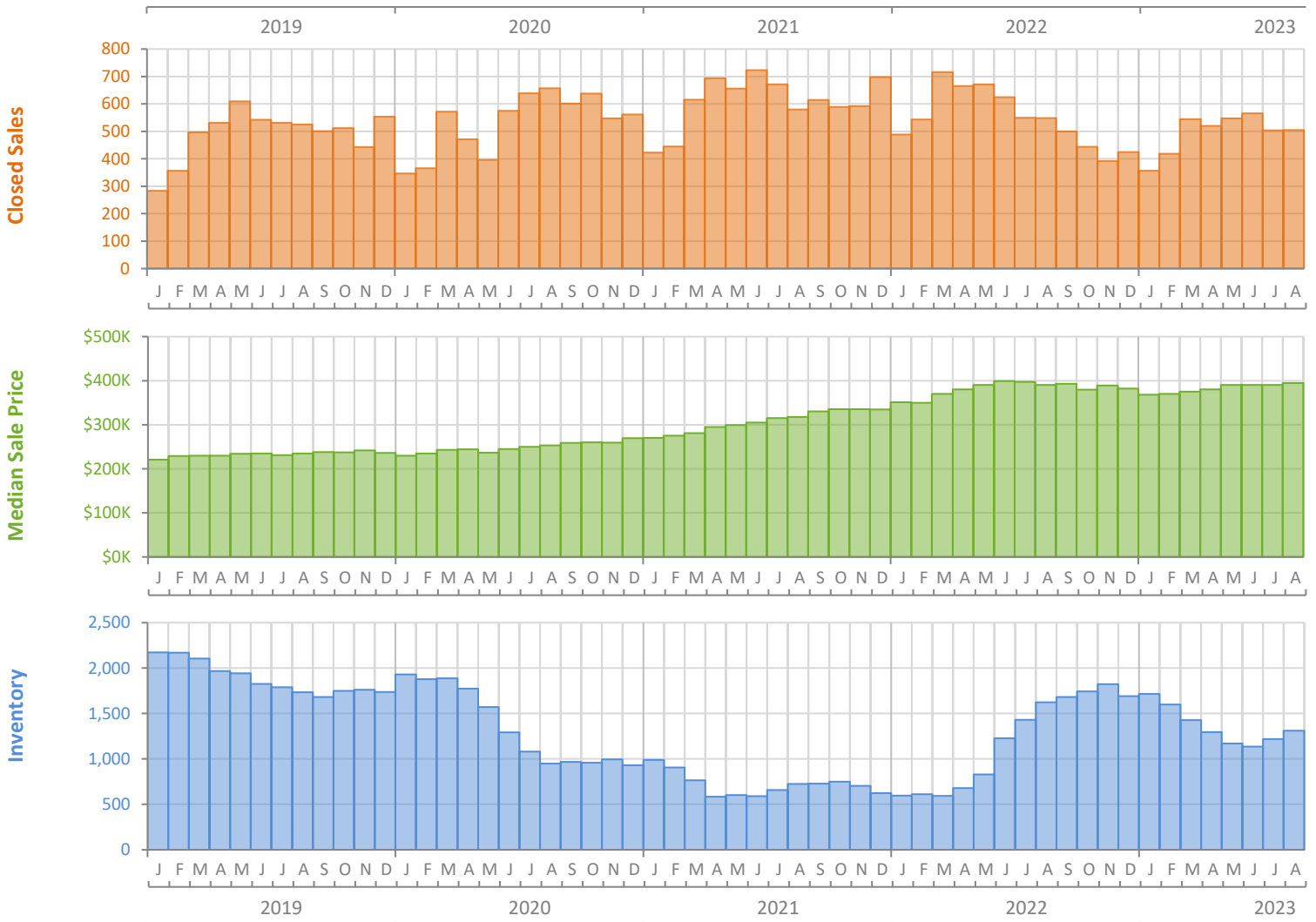
Monthly Market Summary - August 2023

Single-Family Homes

St. Lucie County



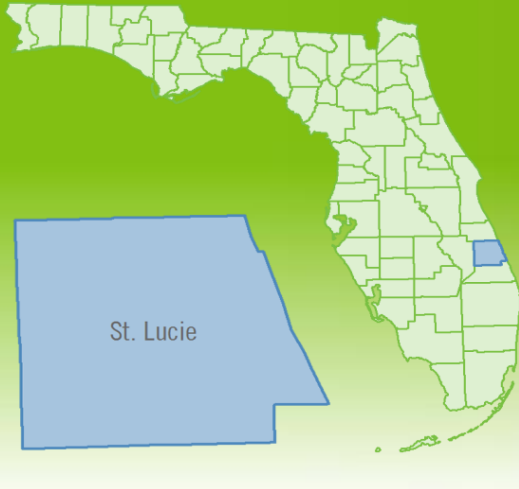
| | August 2023 | August 2022 | Percent Change Year-over-Year |
|--|-----------------|-----------------|-------------------------------|
| Closed Sales | 505 | 549 | -8.0% |
| Paid in Cash | 128 | 121 | 5.8% |
| Median Sale Price | \$395,000 | \$390,000 | 1.3% |
| Average Sale Price | \$425,018 | \$424,030 | 0.2% |
| Dollar Volume | \$214.6 Million | \$232.8 Million | -7.8% |
| Med. Pct. of Orig. List Price Received | 97.5% | 100.0% | -2.5% |
| Median Time to Contract | 29 Days | 16 Days | 81.3% |
| Median Time to Sale | 70 Days | 61 Days | 14.8% |
| New Pending Sales | 484 | 546 | -11.4% |
| New Listings | 624 | 827 | -24.5% |
| Pending Inventory | 795 | 916 | -13.2% |
| Inventory (Active Listings) | 1,311 | 1,625 | -19.3% |
| Months Supply of Inventory | 2.7 | 2.7 | 0.0% |



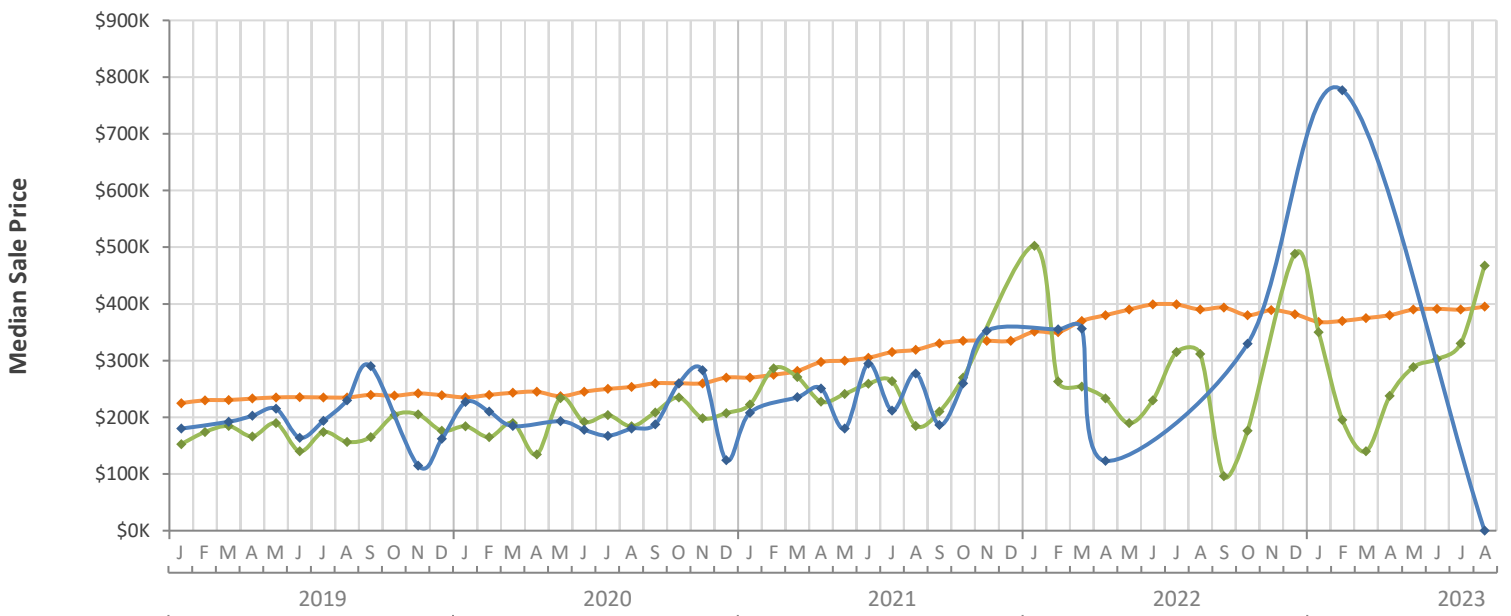
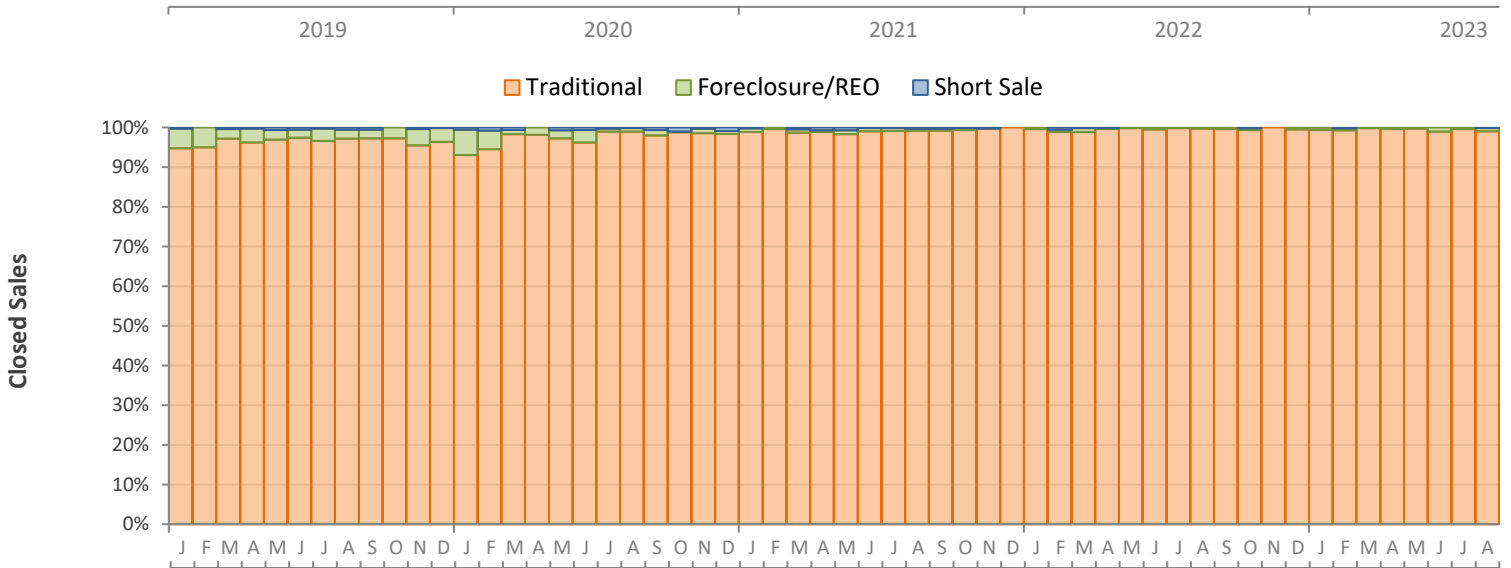
Monthly Distressed Market - August 2023

Single-Family Homes

St. Lucie County



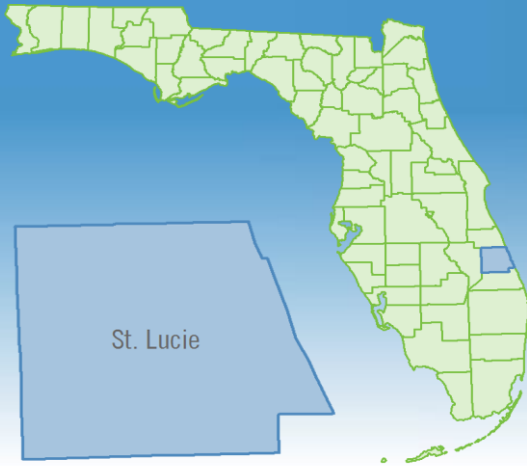
| | | August 2023 | August 2022 | Percent Change Year-over-Year |
|-----------------|-------------------|-------------|-------------|-------------------------------|
| Traditional | Closed Sales | 500 | 547 | -8.6% |
| | Median Sale Price | \$395,000 | \$390,000 | 1.3% |
| Foreclosure/REO | Closed Sales | 4 | 2 | 100.0% |
| | Median Sale Price | \$467,450 | \$311,875 | 49.9% |
| Short Sale | Closed Sales | 1 | 0 | N/A |
| | Median Sale Price | \$0 | (No Sales) | N/A |



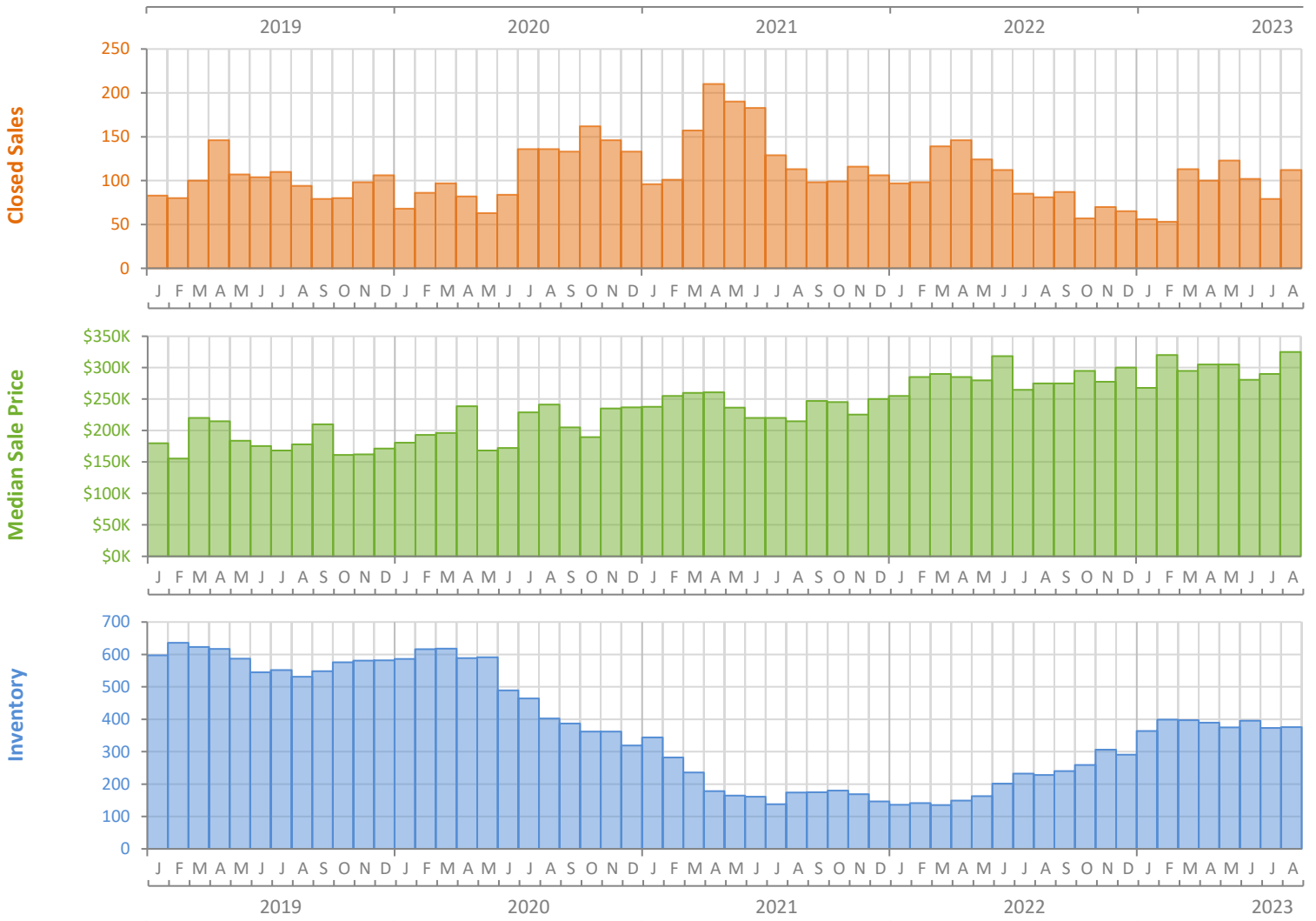
Monthly Market Summary - August 2023

Townhouses and Condos

St. Lucie County



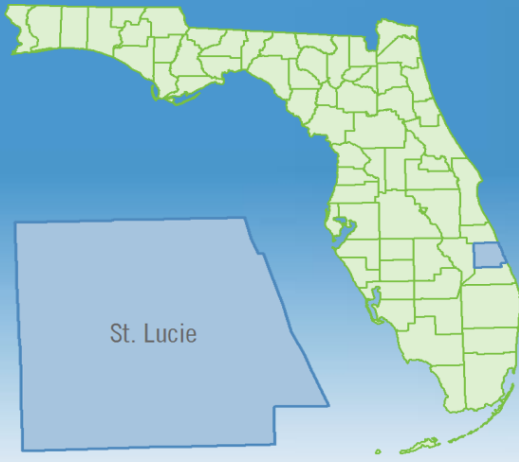
| | August 2023 | August 2022 | Percent Change Year-over-Year |
|--|----------------|----------------|-------------------------------|
| Closed Sales | 112 | 81 | 38.3% |
| Paid in Cash | 55 | 30 | 83.3% |
| Median Sale Price | \$324,950 | \$275,000 | 18.2% |
| Average Sale Price | \$386,195 | \$339,042 | 13.9% |
| Dollar Volume | \$43.3 Million | \$27.5 Million | 57.5% |
| Med. Pct. of Orig. List Price Received | 96.4% | 97.5% | -1.1% |
| Median Time to Contract | 37 Days | 18 Days | 105.6% |
| Median Time to Sale | 78 Days | 54 Days | 44.4% |
| New Pending Sales | 108 | 82 | 31.7% |
| New Listings | 119 | 103 | 15.5% |
| Pending Inventory | 150 | 123 | 22.0% |
| Inventory (Active Listings) | 376 | 228 | 64.9% |
| Months Supply of Inventory | 4.4 | 2.1 | 109.5% |



Monthly Distressed Market - August 2023

Townhouses and Condos

St. Lucie County



| | | August 2023 | August 2022 | Percent Change Year-over-Year |
|-----------------|-------------------|-------------|-------------|-------------------------------|
| Traditional | Closed Sales | 110 | 81 | 35.8% |
| | Median Sale Price | \$324,950 | \$275,000 | 18.2% |
| Foreclosure/REO | Closed Sales | 1 | 0 | N/A |
| | Median Sale Price | \$115,000 | (No Sales) | N/A |
| Short Sale | Closed Sales | 1 | 0 | N/A |
| | Median Sale Price | \$435,000 | (No Sales) | N/A |

