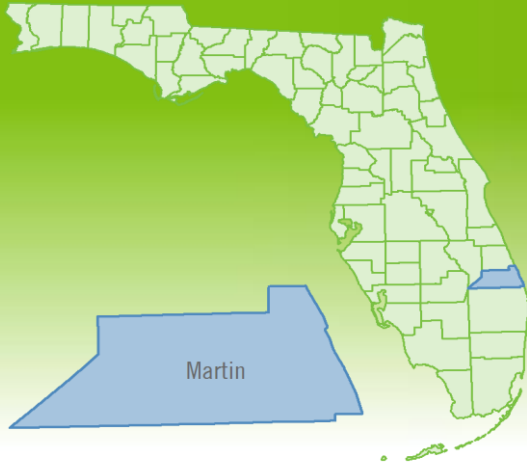


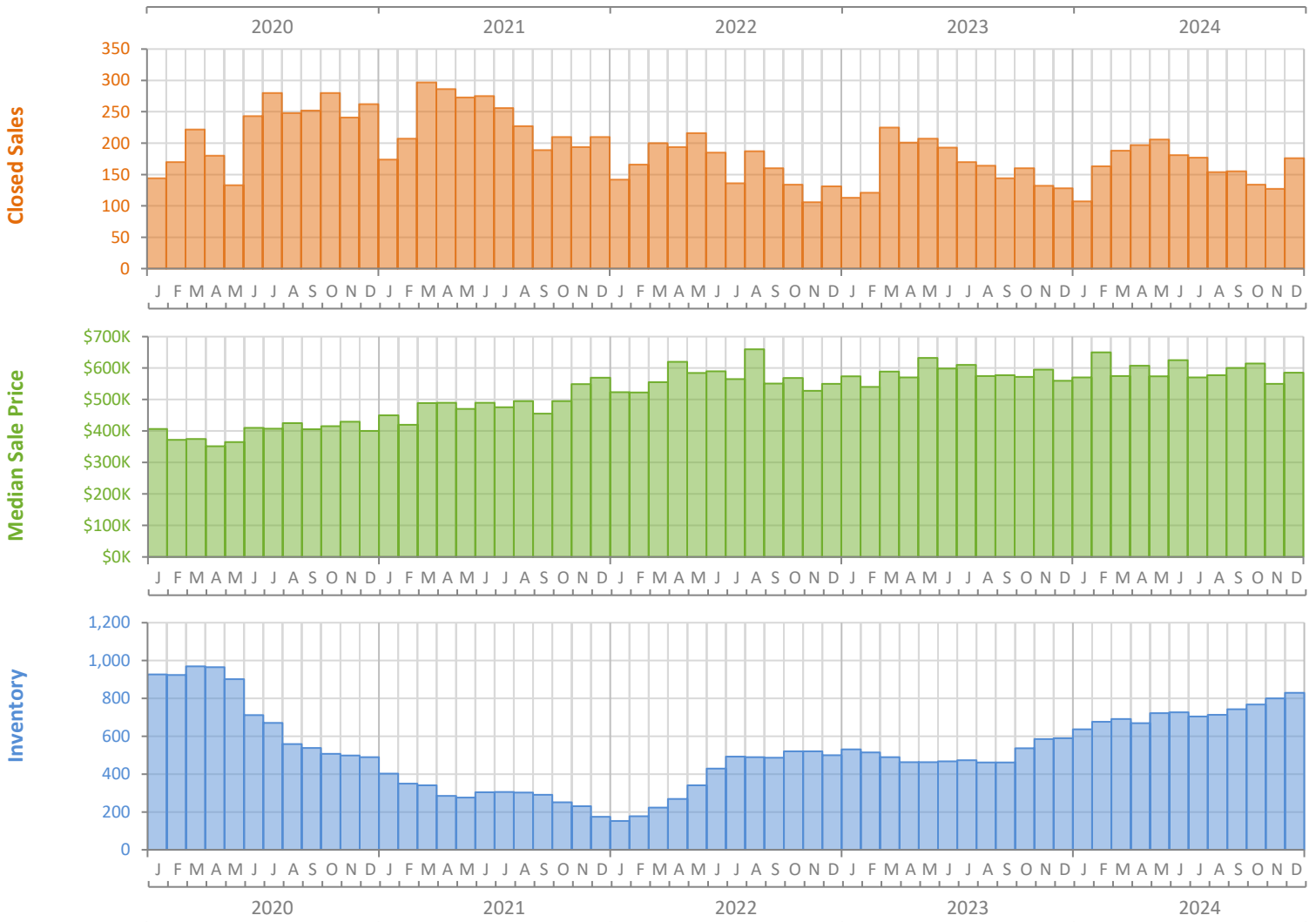
Monthly Market Summary - December 2024

Single-Family Homes

Martin County



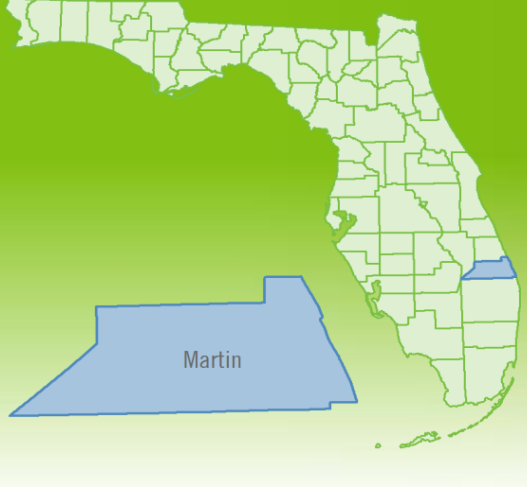
	December 2024	December 2023	Percent Change Year-over-Year
Closed Sales	176	128	37.5%
Paid in Cash	85	71	19.7%
Median Sale Price	\$585,000	\$560,000	4.5%
Average Sale Price	\$828,809	\$822,106	0.8%
Dollar Volume	\$145.9 Million	\$105.2 Million	38.6%
Med. Pct. of Orig. List Price Received	93.3%	95.4%	-2.2%
Median Time to Contract	42 Days	25 Days	68.0%
Median Time to Sale	83 Days	62 Days	33.9%
New Pending Sales	131	116	12.9%
New Listings	201	153	31.4%
Pending Inventory	166	161	3.1%
Inventory (Active Listings)	829	590	40.5%
Months Supply of Inventory	5.1	3.6	41.7%



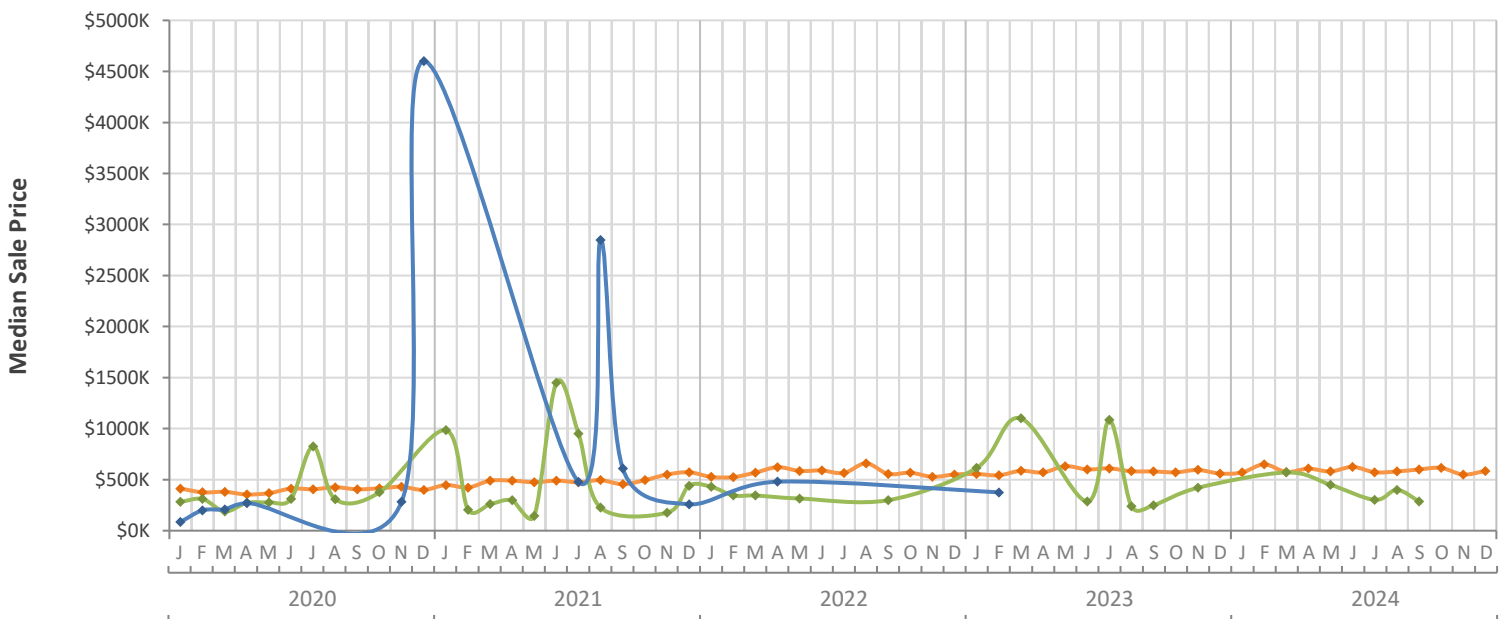
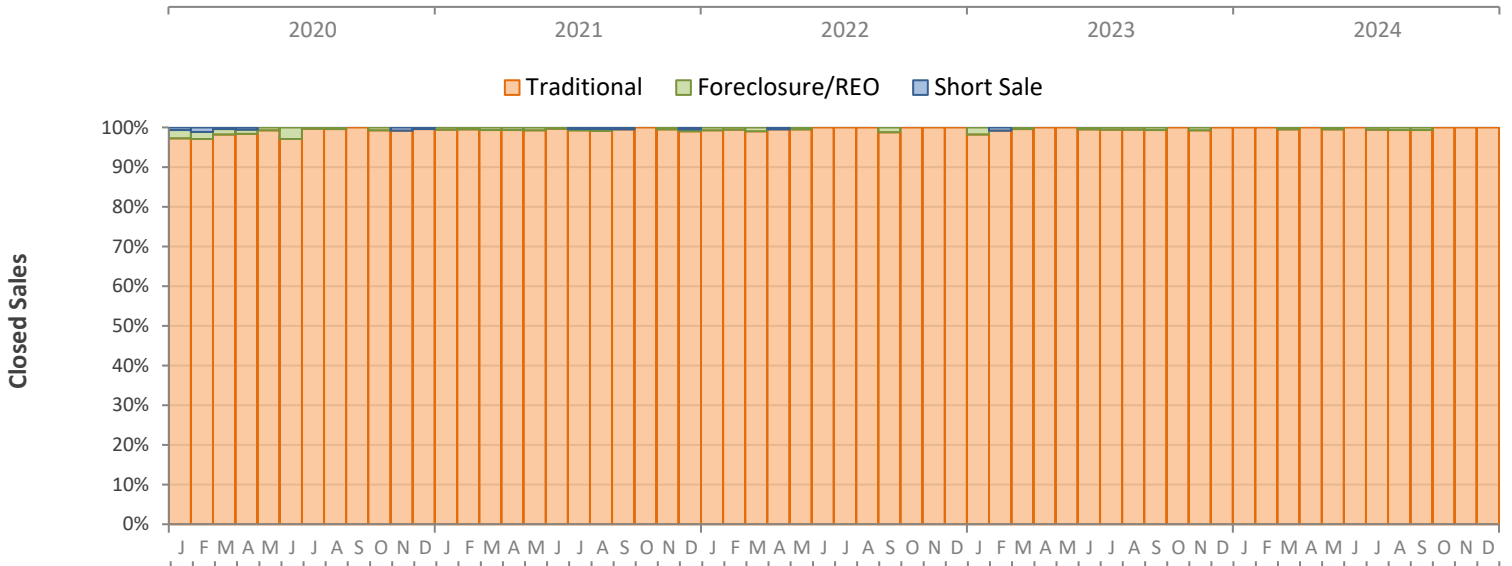
Monthly Distressed Market - December 2024

Single-Family Homes

Martin County



		December 2024	December 2023	Percent Change Year-over-Year
Traditional	Closed Sales	176	128	37.5%
	Median Sale Price	\$585,000	\$560,000	4.5%
Foreclosure/REO	Closed Sales	0	0	N/A
	Median Sale Price	(No Sales)	(No Sales)	N/A
Short Sale	Closed Sales	0	0	N/A
	Median Sale Price	(No Sales)	(No Sales)	N/A

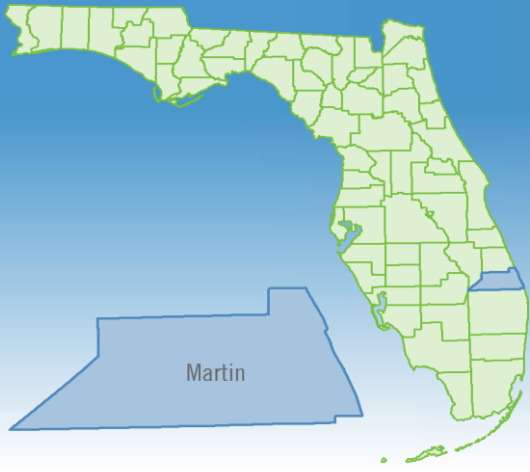


Produced by Florida REALTORS® with data provided by Florida's multiple listing services. Statistics for each month compiled from MLS feeds on the 15th day of the following month. Data released on Friday, January 24, 2025. Next data release is Friday, February 21, 2025.

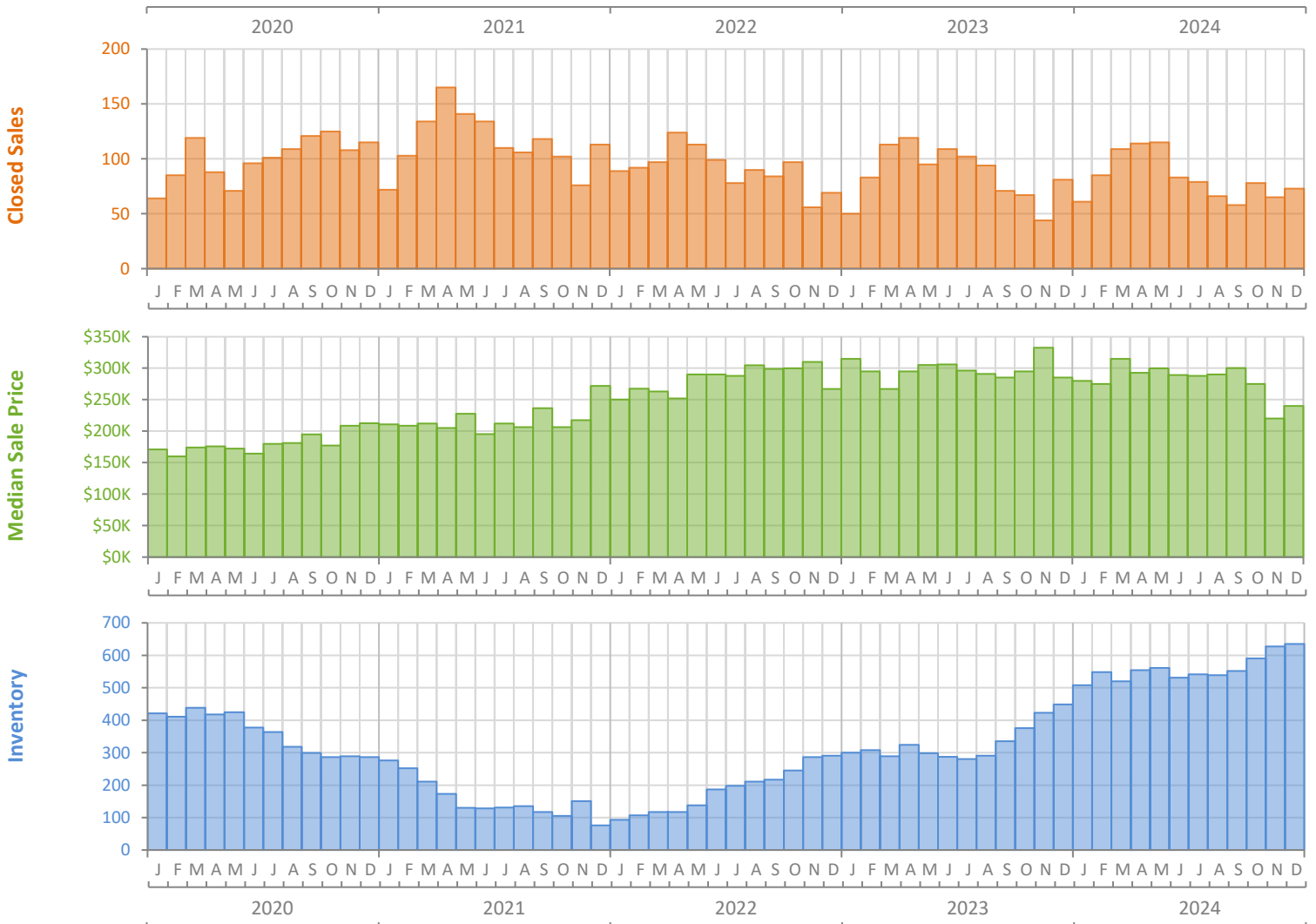
Monthly Market Summary - December 2024

Townhouses and Condos

Martin County



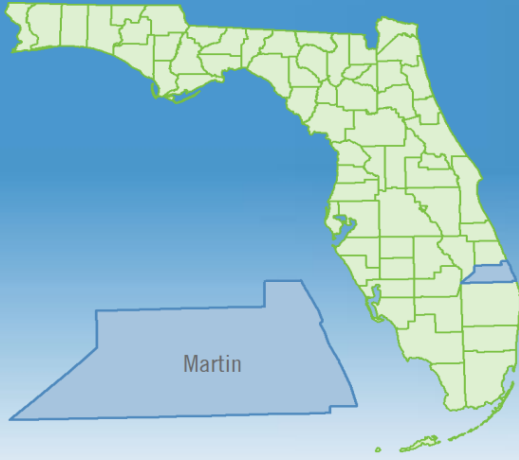
	December 2024	December 2023	Percent Change Year-over-Year
Closed Sales	73	81	-9.9%
Paid in Cash	40	50	-20.0%
Median Sale Price	\$240,000	\$285,000	-15.8%
Average Sale Price	\$318,399	\$356,590	-10.7%
Dollar Volume	\$23.2 Million	\$28.9 Million	-19.5%
Med. Pct. of Orig. List Price Received	89.7%	95.3%	-5.9%
Median Time to Contract	65 Days	34 Days	91.2%
Median Time to Sale	96 Days	69 Days	39.1%
New Pending Sales	57	73	-21.9%
New Listings	116	113	2.7%
Pending Inventory	92	122	-24.6%
Inventory (Active Listings)	635	449	41.4%
Months Supply of Inventory	7.7	5.2	48.1%



Monthly Distressed Market - December 2024

Townhouses and Condos

Martin County



		December 2024	December 2023	Percent Change Year-over-Year
Traditional	Closed Sales	72	81	-11.1%
	Median Sale Price	\$242,500	\$285,000	-14.9%
Foreclosure/REO	Closed Sales	1	0	N/A
	Median Sale Price	\$199,000	(No Sales)	N/A
Short Sale	Closed Sales	0	0	N/A
	Median Sale Price	(No Sales)	(No Sales)	N/A

