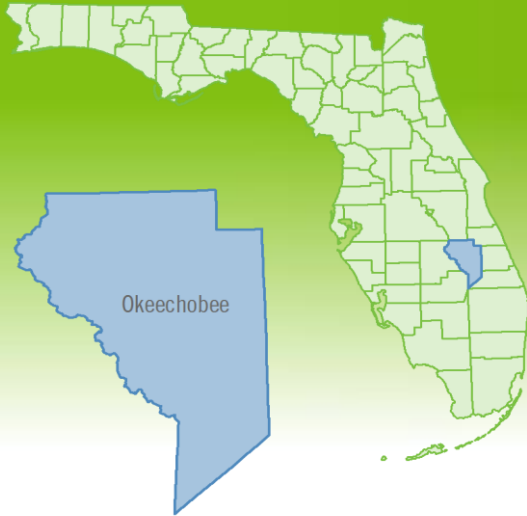


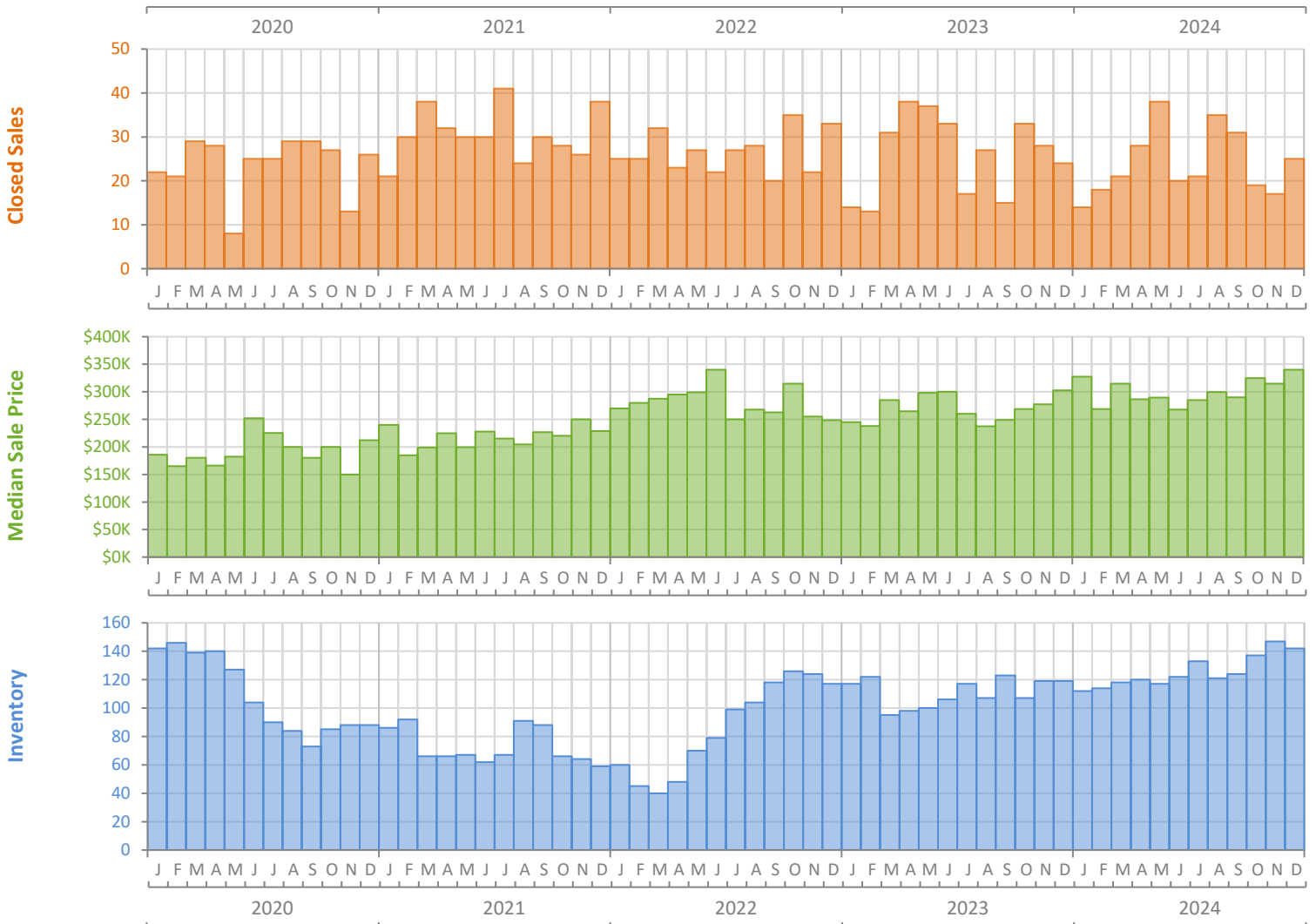
Monthly Market Summary - December 2024

Single-Family Homes

Okeechobee County



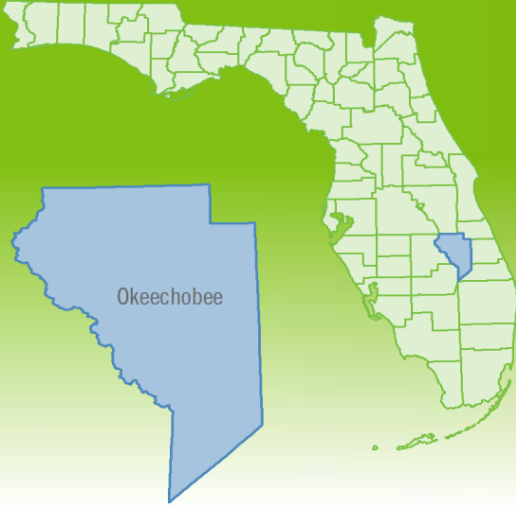
	December 2024	December 2023	Percent Change Year-over-Year
Closed Sales	25	24	4.2%
Paid in Cash	2	6	-66.7%
Median Sale Price	\$340,000	\$302,500	12.4%
Average Sale Price	\$363,220	\$339,981	6.8%
Dollar Volume	\$9.1 Million	\$8.2 Million	11.3%
Med. Pct. of Orig. List Price Received	96.2%	91.3%	5.4%
Median Time to Contract	36 Days	87 Days	-58.6%
Median Time to Sale	78 Days	115 Days	-32.2%
New Pending Sales	23	17	35.3%
New Listings	31	22	40.9%
Pending Inventory	33	27	22.2%
Inventory (Active Listings)	142	119	19.3%
Months Supply of Inventory	5.9	4.6	28.3%



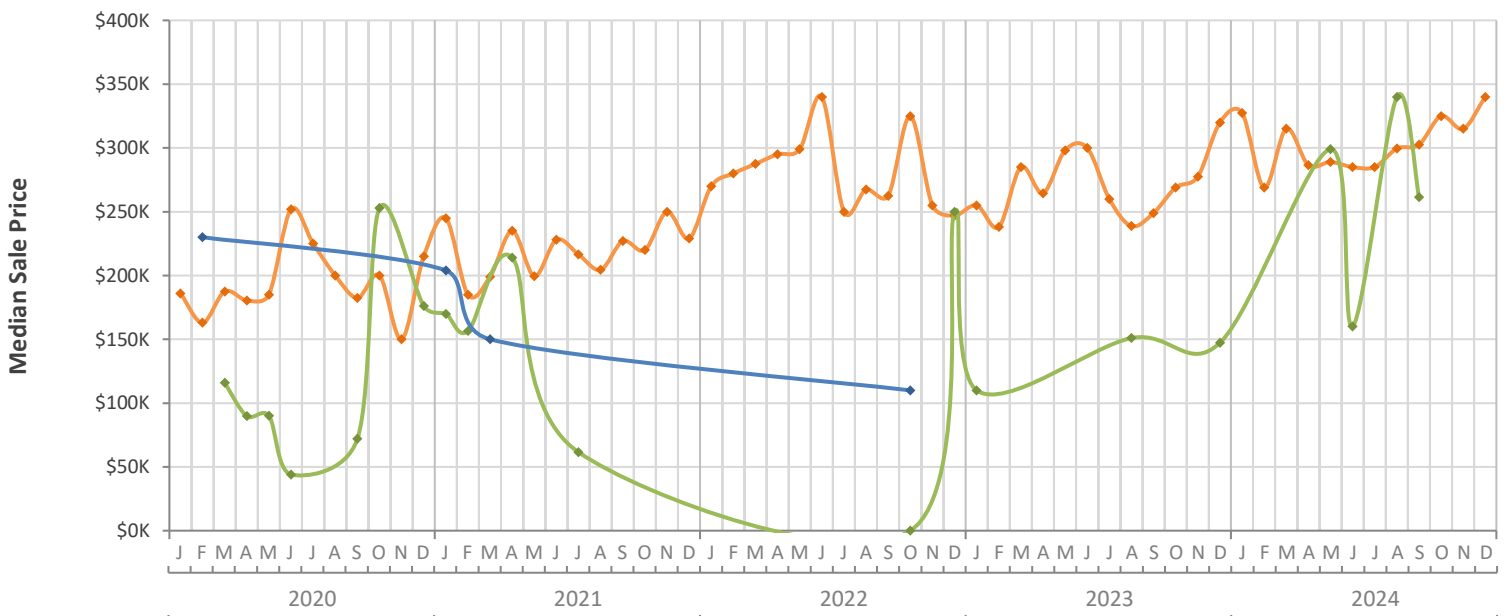
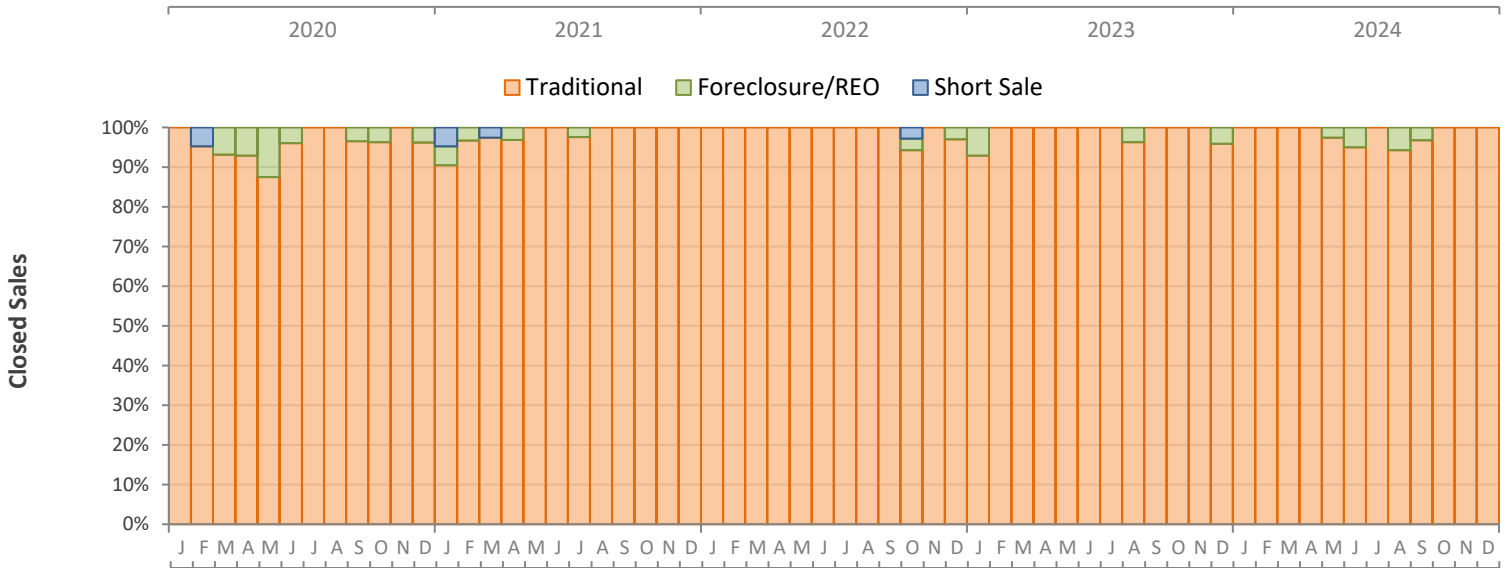
Monthly Distressed Market - December 2024

Single-Family Homes

Okeechobee County



		December 2024	December 2023	Percent Change Year-over-Year
Traditional	Closed Sales	25	23	8.7%
	Median Sale Price	\$340,000	\$320,000	6.3%
Foreclosure/REO	Closed Sales	0	1	-100.0%
	Median Sale Price	(No Sales)	\$147,250	N/A
Short Sale	Closed Sales	0	0	N/A
	Median Sale Price	(No Sales)	(No Sales)	N/A



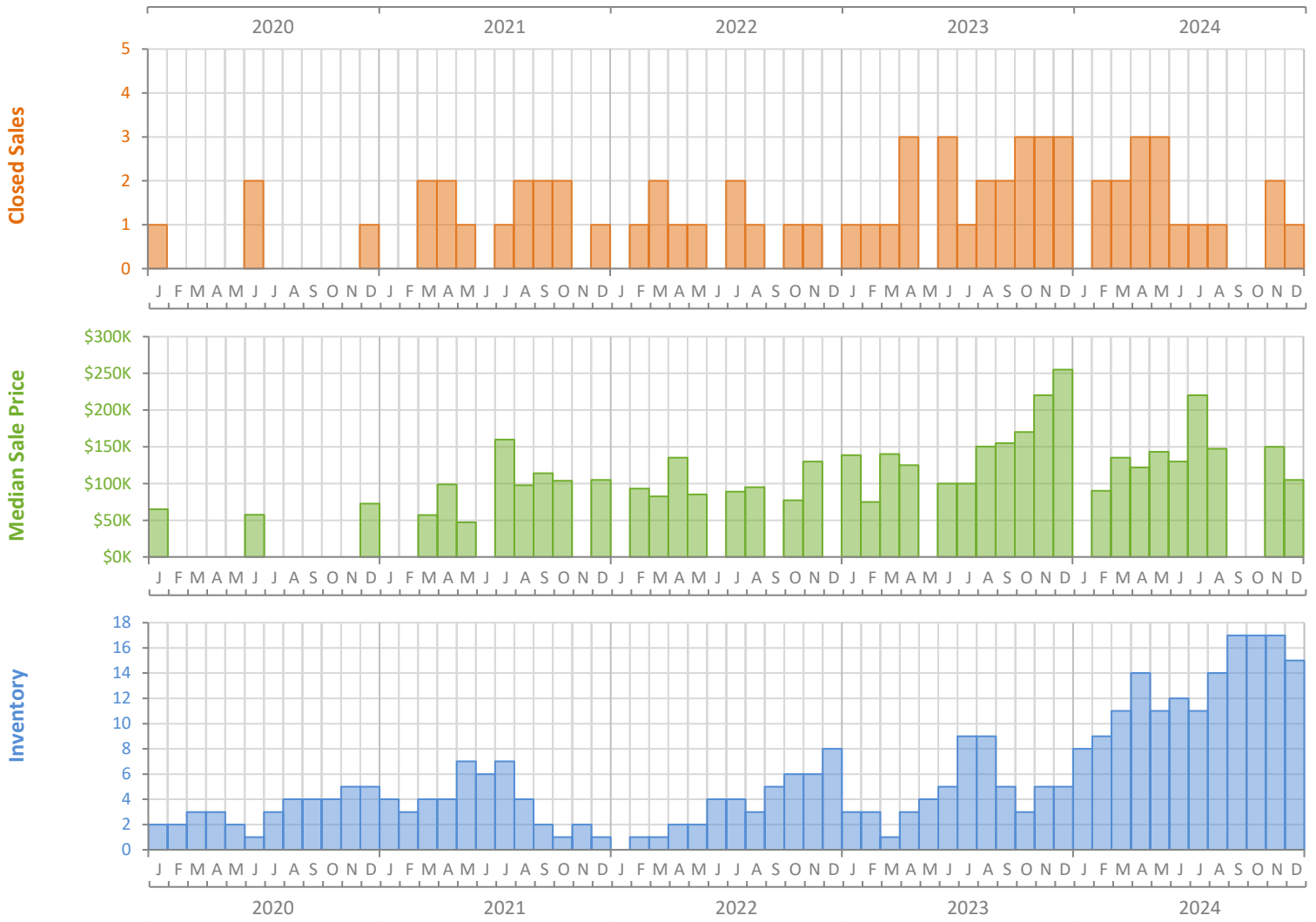
Monthly Market Summary - December 2024

Townhouses and Condos

Okeechobee County



	December 2024	December 2023	Percent Change Year-over-Year
Closed Sales	1	3	-66.7%
Paid in Cash	1	1	0.0%
Median Sale Price	\$105,000	\$255,000	-58.8%
Average Sale Price	\$105,000	\$222,167	-52.7%
Dollar Volume	\$105,000	\$666,501	-84.2%
Med. Pct. of Orig. List Price Received	87.5%	97.3%	-10.1%
Median Time to Contract	144 Days	16 Days	800.0%
Median Time to Sale	176 Days	36 Days	388.9%
New Pending Sales	0	1	-100.0%
New Listings	1	2	-50.0%
Pending Inventory	0	0	N/A
Inventory (Active Listings)	15	5	200.0%
Months Supply of Inventory	11.3	2.6	334.6%



Monthly Distressed Market - December 2024

Townhouses and Condos

Okeechobee County



		December 2024	December 2023	Percent Change Year-over-Year
Traditional	Closed Sales	1	3	-66.7%
	Median Sale Price	\$105,000	\$255,000	-58.8%
Foreclosure/REO	Closed Sales	0	0	N/A
	Median Sale Price	(No Sales)	(No Sales)	N/A
Short Sale	Closed Sales	0	0	N/A
	Median Sale Price	(No Sales)	(No Sales)	N/A

