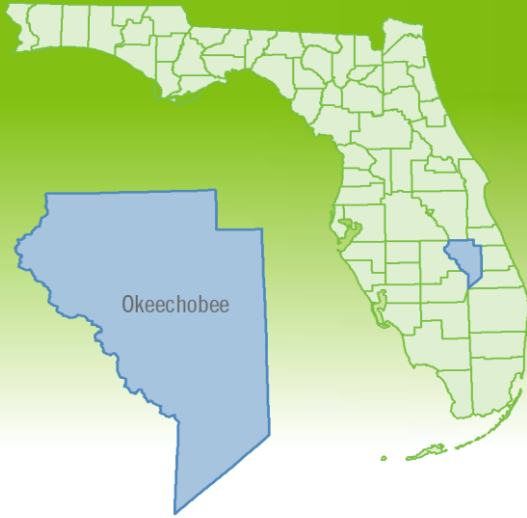


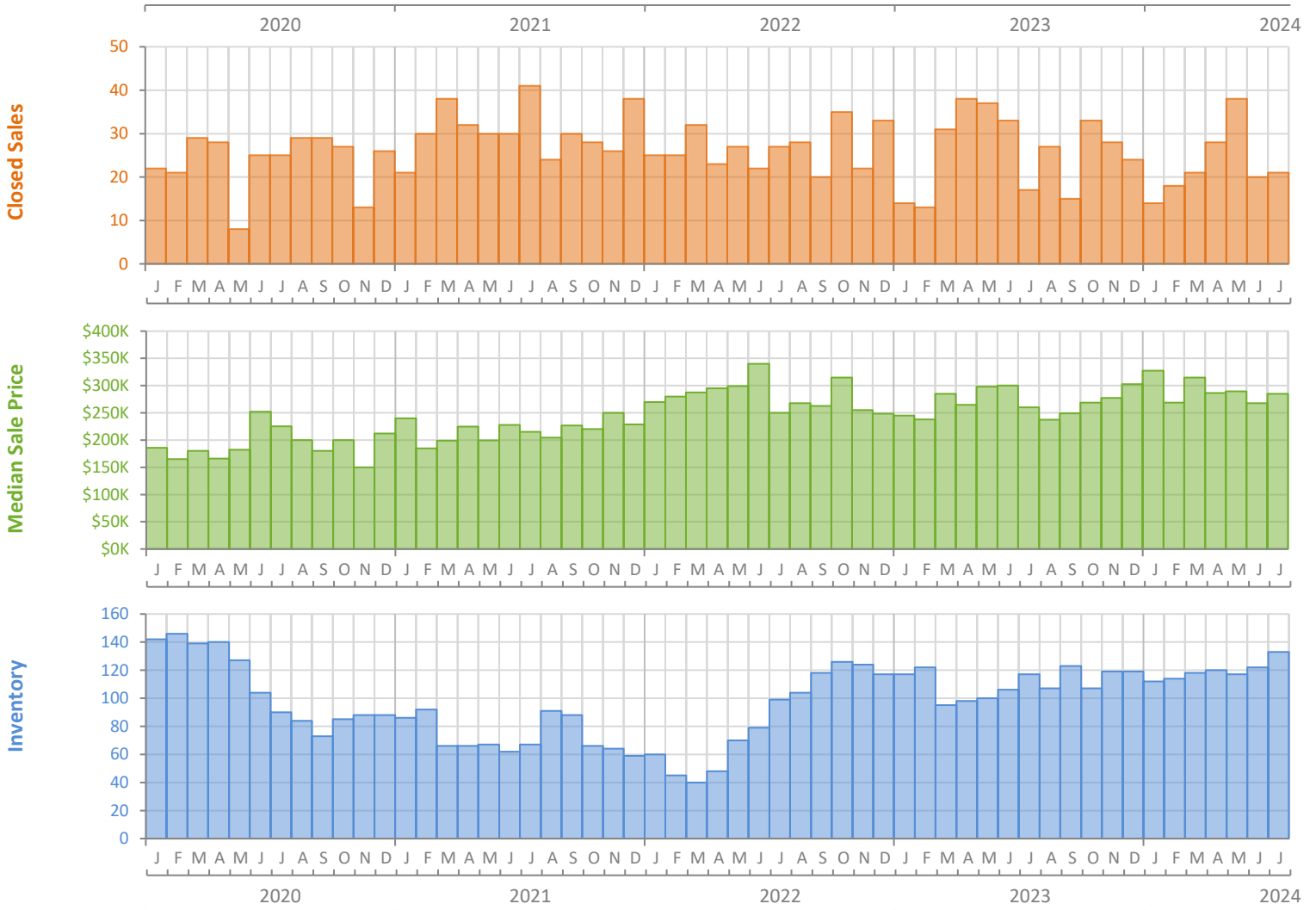
Monthly Market Summary - July 2024

Single-Family Homes

Okeechobee County



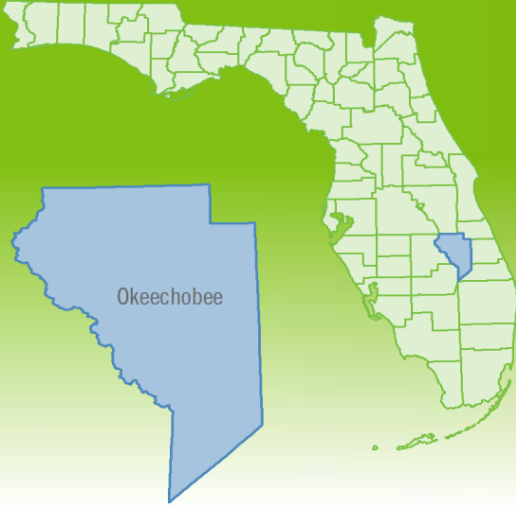
	July 2024	July 2023	Percent Change Year-over-Year
Closed Sales	21	17	23.5%
Paid in Cash	6	5	20.0%
Median Sale Price	\$285,000	\$260,000	9.6%
Average Sale Price	\$313,214	\$295,912	5.8%
Dollar Volume	\$6.6 Million	\$5.0 Million	30.8%
Med. Pct. of Orig. List Price Received	97.6%	98.4%	-0.8%
Median Time to Contract	18 Days	116 Days	-84.5%
Median Time to Sale	61 Days	153 Days	-60.1%
New Pending Sales	30	22	36.4%
New Listings	48	42	14.3%
Pending Inventory	56	37	51.4%
Inventory (Active Listings)	133	117	13.7%
Months Supply of Inventory	5.6	4.4	27.3%



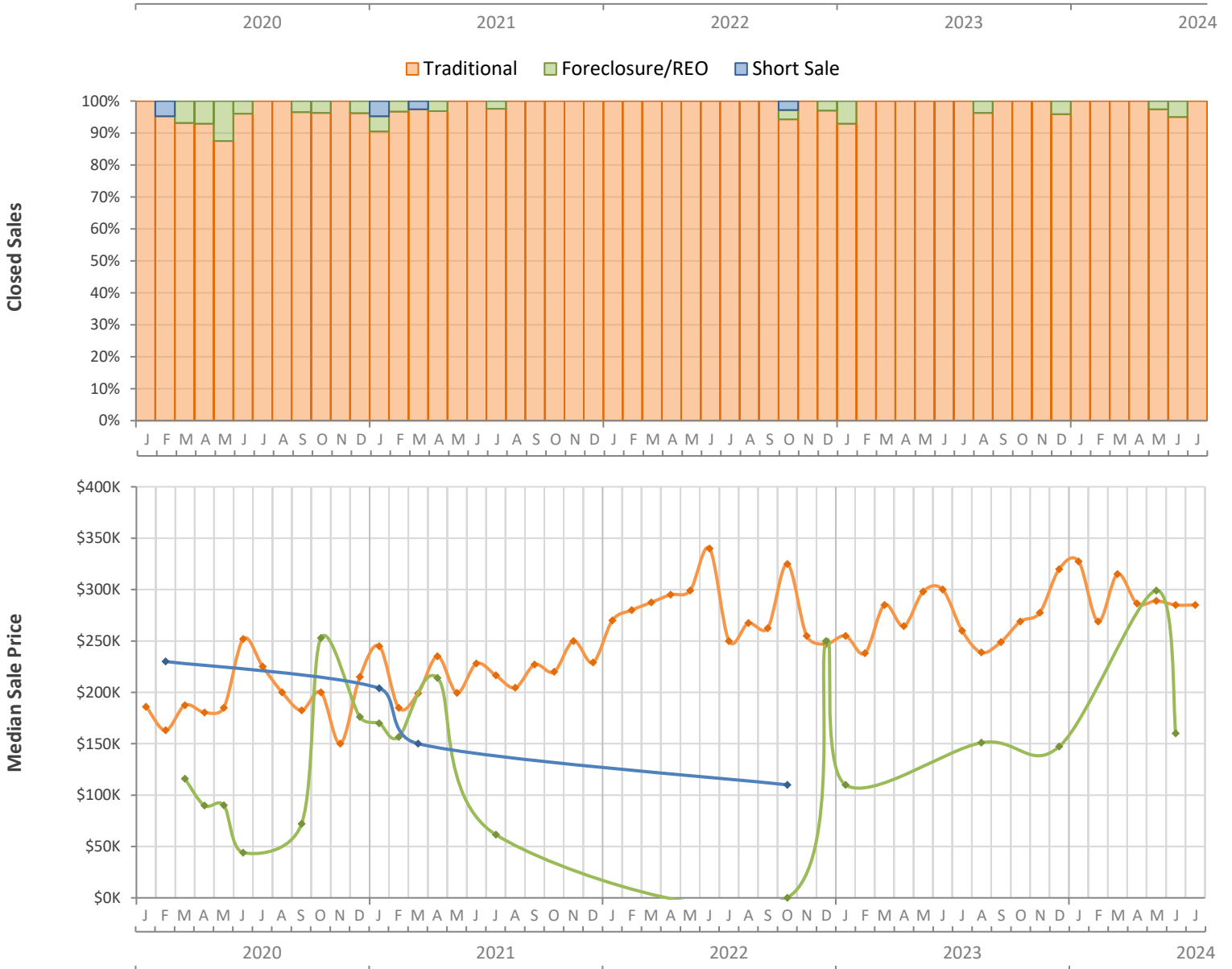
Monthly Distressed Market - July 2024

Single-Family Homes

Okeechobee County



		July 2024	July 2023	Percent Change Year-over-Year
Traditional	Closed Sales	21	17	23.5%
	Median Sale Price	\$285,000	\$260,000	9.6%
Foreclosure/REO	Closed Sales	0	0	N/A
	Median Sale Price	(No Sales)	(No Sales)	N/A
Short Sale	Closed Sales	0	0	N/A
	Median Sale Price	(No Sales)	(No Sales)	N/A



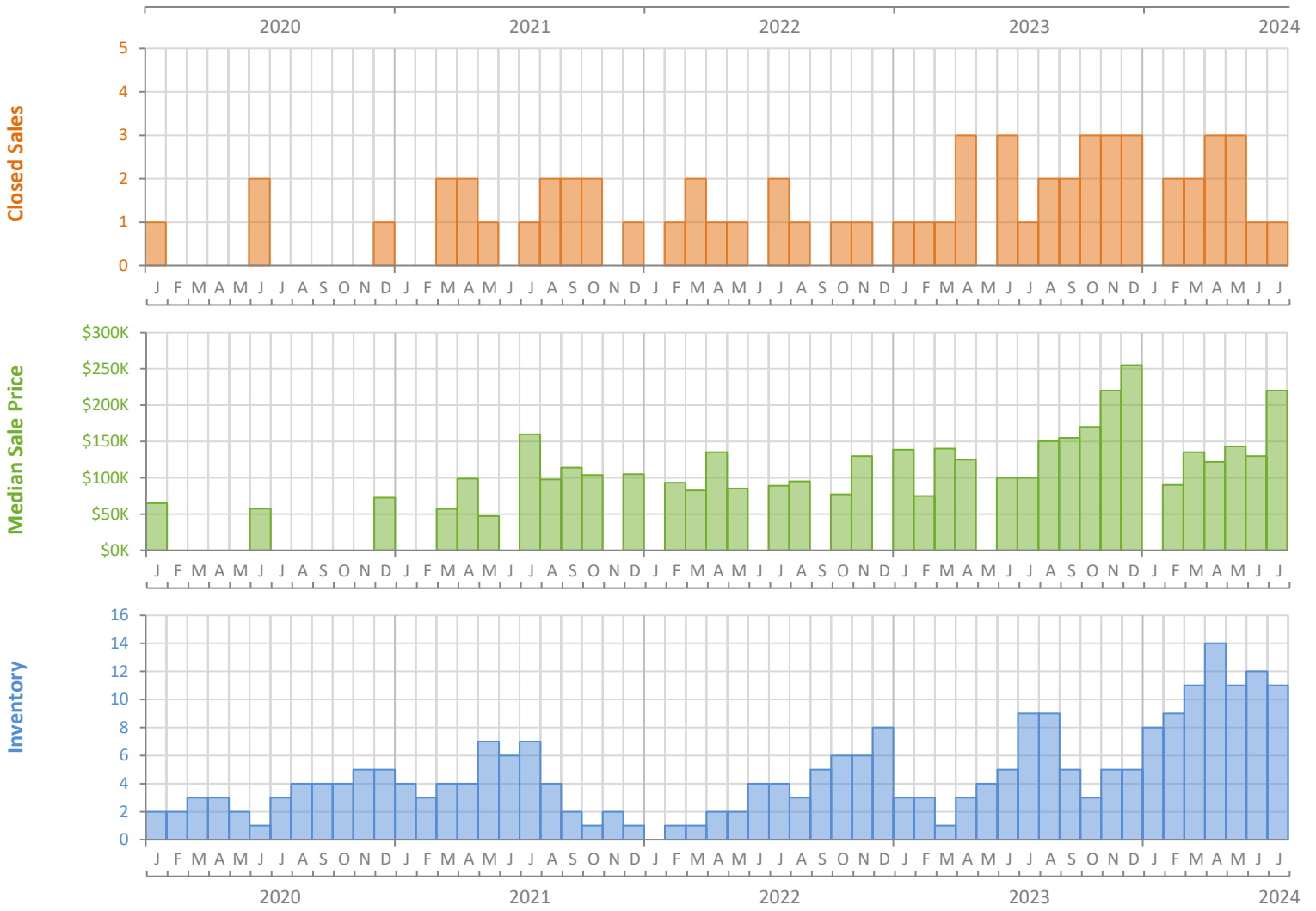
Monthly Market Summary - July 2024

Townhouses and Condos

Okeechobee County



	July 2024	July 2023	Percent Change Year-over-Year
Closed Sales	1	1	0.0%
Paid in Cash	0	1	-100.0%
Median Sale Price	\$220,000	\$100,000	120.0%
Average Sale Price	\$220,000	\$100,000	120.0%
Dollar Volume	\$220,000	\$100,000	120.0%
Med. Pct. of Orig. List Price Received	91.7%	80.3%	14.2%
Median Time to Contract	48 Days	153 Days	-68.6%
Median Time to Sale	89 Days	181 Days	-50.8%
New Pending Sales	1	3	-66.7%
New Listings	2	6	-66.7%
Pending Inventory	1	3	-66.7%
Inventory (Active Listings)	11	9	22.2%
Months Supply of Inventory	5.3	8.3	-36.1%



Monthly Distressed Market - July 2024

Townhouses and Condos

Okeechobee County



		July 2024	July 2023	Percent Change Year-over-Year
Traditional	Closed Sales	1	1	0.0%
	Median Sale Price	\$220,000	\$100,000	120.0%
Foreclosure/REO	Closed Sales	0	0	N/A
	Median Sale Price	(No Sales)	(No Sales)	N/A
Short Sale	Closed Sales	0	0	N/A
	Median Sale Price	(No Sales)	(No Sales)	N/A

