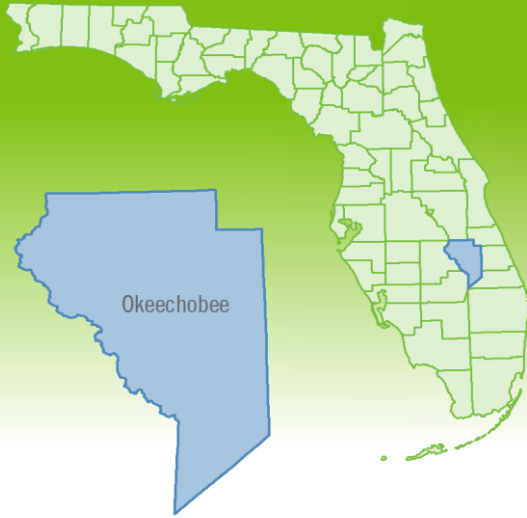


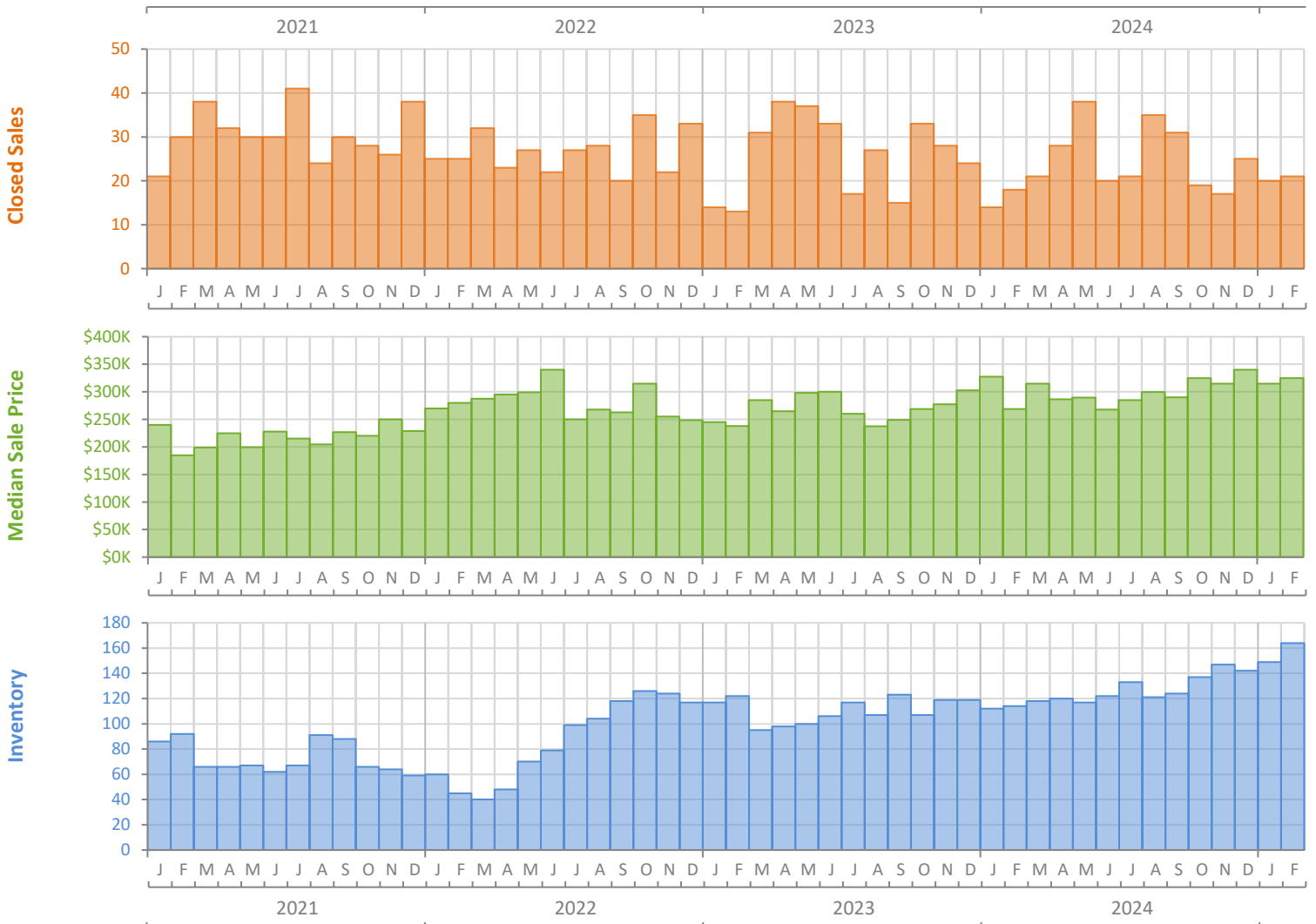
Monthly Market Summary - February 2025

Single-Family Homes

Okeechobee County



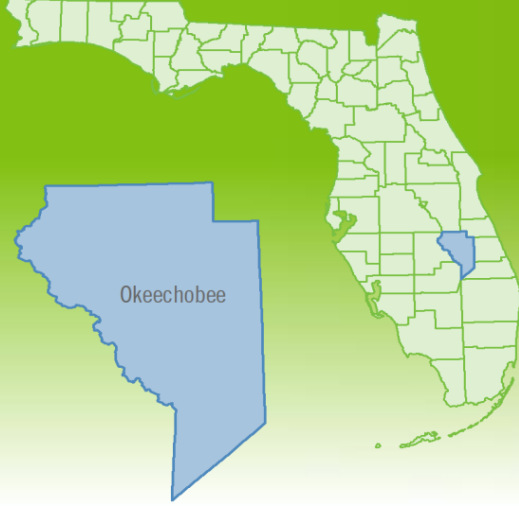
| | February 2025 | February 2024 | Percent Change Year-over-Year |
|--|---------------|---------------|-------------------------------|
| Closed Sales | 21 | 18 | 16.7% |
| Paid in Cash | 8 | 12 | -33.3% |
| Median Sale Price | \$325,000 | \$268,850 | 20.9% |
| Average Sale Price | \$332,190 | \$275,261 | 20.7% |
| Dollar Volume | \$7.0 Million | \$5.0 Million | 40.8% |
| Med. Pct. of Orig. List Price Received | 94.5% | 94.0% | 0.5% |
| Median Time to Contract | 46 Days | 50 Days | -8.0% |
| Median Time to Sale | 98 Days | 80 Days | 22.5% |
| New Pending Sales | 17 | 25 | -32.0% |
| New Listings | 41 | 33 | 24.2% |
| Pending Inventory | 37 | 41 | -9.8% |
| Inventory (Active Listings) | 164 | 114 | 43.9% |
| Months Supply of Inventory | 6.6 | 4.3 | 53.5% |



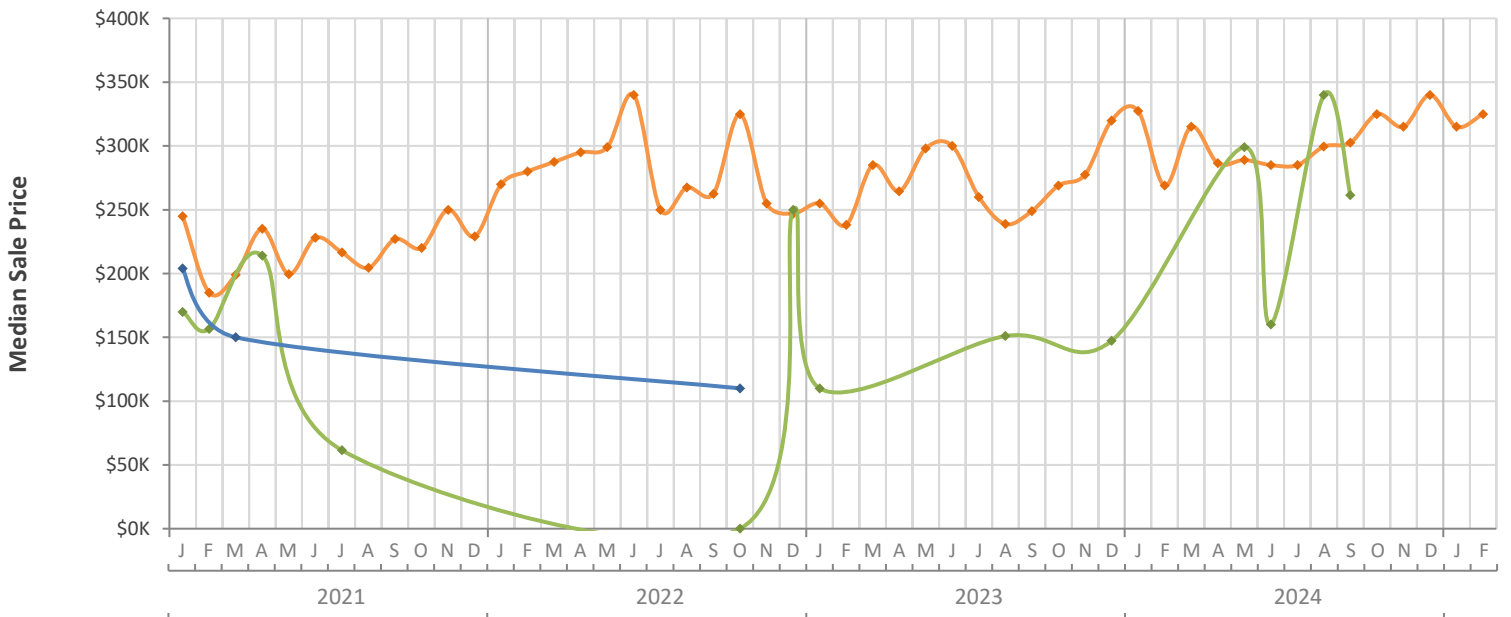
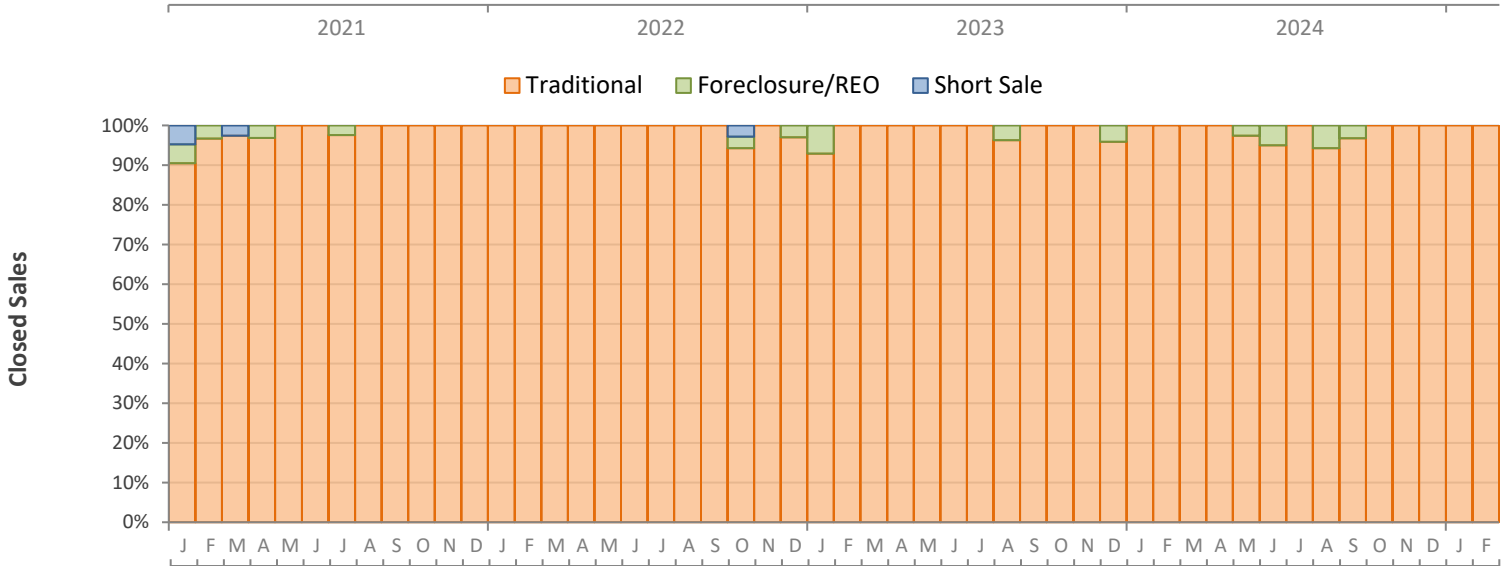
Monthly Distressed Market - February 2025

Single-Family Homes

Okeechobee County



| | | February 2025 | February 2024 | Percent Change Year-over-Year |
|-----------------|-------------------|---------------|---------------|-------------------------------|
| Traditional | Closed Sales | 21 | 18 | 16.7% |
| | Median Sale Price | \$325,000 | \$268,850 | 20.9% |
| Foreclosure/REO | Closed Sales | 0 | 0 | N/A |
| | Median Sale Price | (No Sales) | (No Sales) | N/A |
| Short Sale | Closed Sales | 0 | 0 | N/A |
| | Median Sale Price | (No Sales) | (No Sales) | N/A |



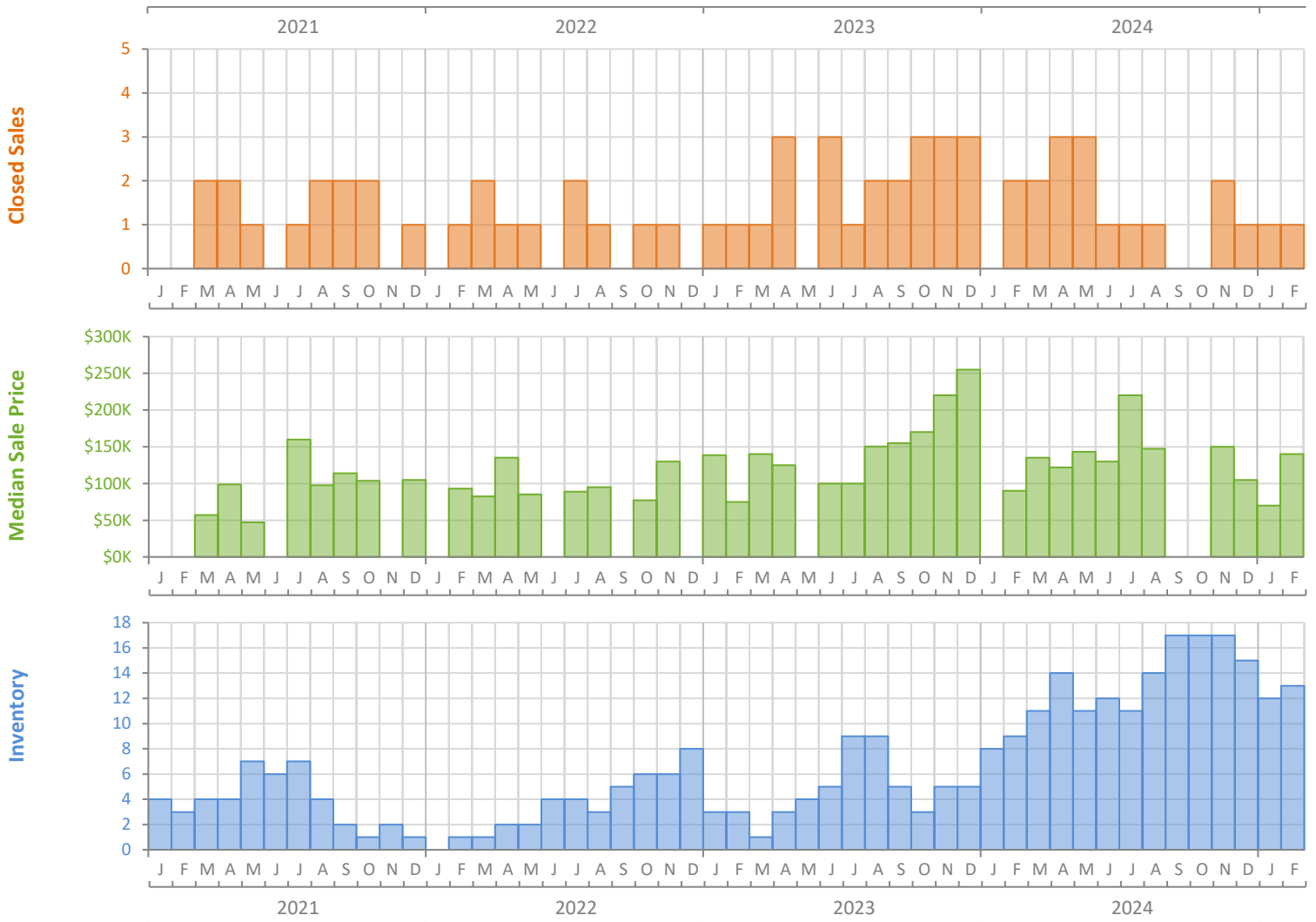
Monthly Market Summary - February 2025

Townhouses and Condos

Okeechobee County



| | February 2025 | February 2024 | Percent Change Year-over-Year |
|--|---------------|---------------|-------------------------------|
| Closed Sales | 1 | 2 | -50.0% |
| Paid in Cash | 1 | 2 | -50.0% |
| Median Sale Price | \$140,000 | \$90,000 | 55.6% |
| Average Sale Price | \$140,000 | \$90,000 | 55.6% |
| Dollar Volume | \$140,000 | \$180,000 | -22.2% |
| Med. Pct. of Orig. List Price Received | 88.1% | 87.3% | 0.9% |
| Median Time to Contract | 230 Days | 41 Days | 461.0% |
| Median Time to Sale | 262 Days | 54 Days | 385.2% |
| New Pending Sales | 2 | 2 | 0.0% |
| New Listings | 3 | 4 | -25.0% |
| Pending Inventory | 2 | 0 | N/A |
| Inventory (Active Listings) | 13 | 9 | 44.4% |
| Months Supply of Inventory | 9.8 | 4.7 | 108.5% |



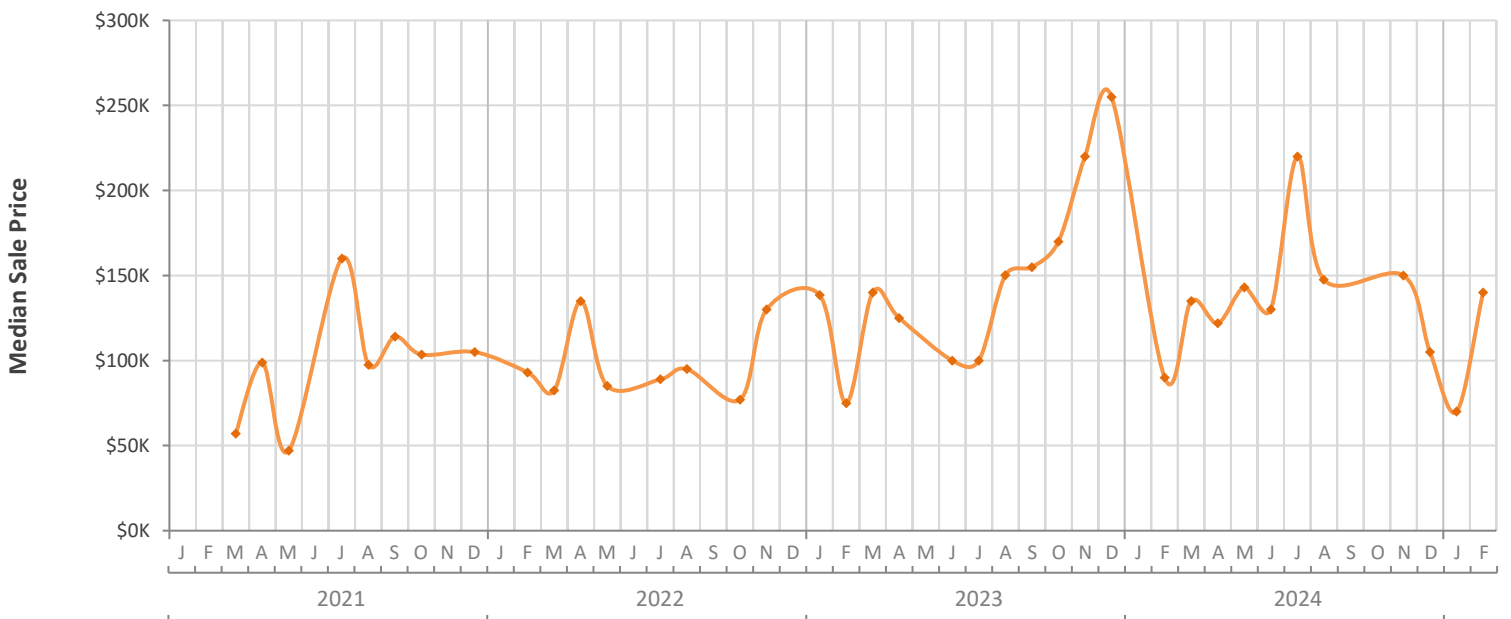
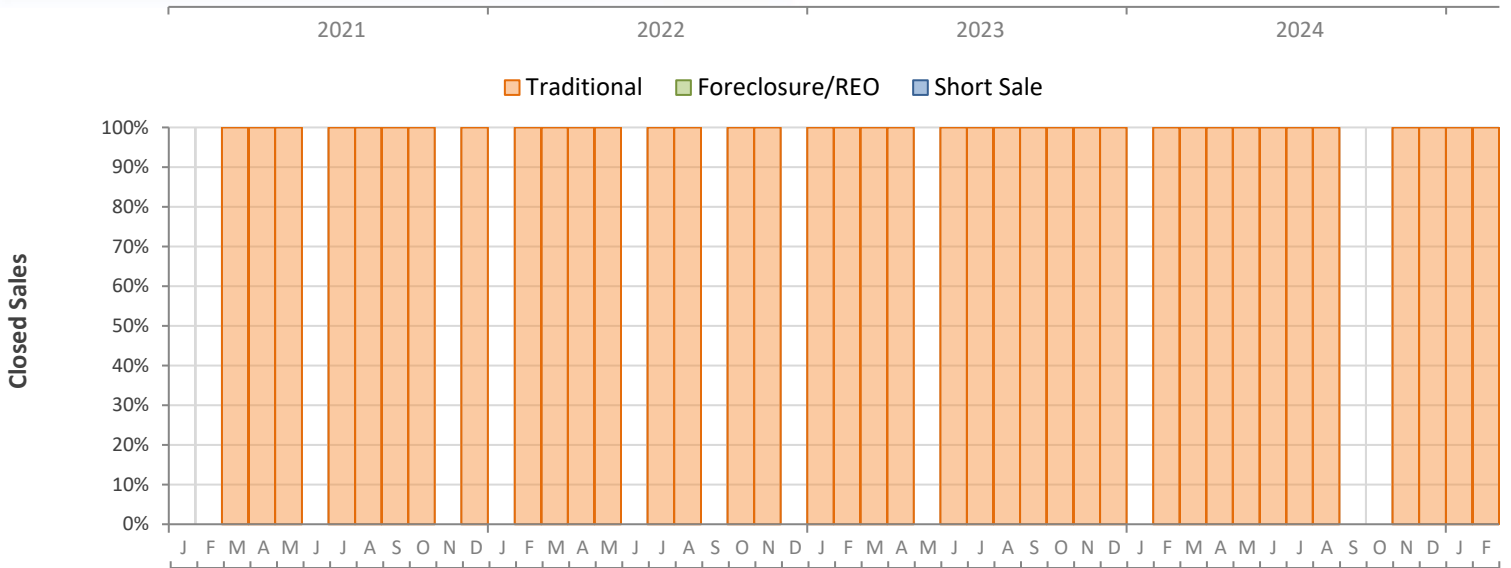
Monthly Distressed Market - February 2025

Townhouses and Condos

Okeechobee County



| | | February 2025 | February 2024 | Percent Change Year-over-Year |
|-----------------|-------------------|---------------|---------------|-------------------------------|
| Traditional | Closed Sales | 1 | 2 | -50.0% |
| | Median Sale Price | \$140,000 | \$90,000 | 55.6% |
| Foreclosure/REO | Closed Sales | 0 | 0 | N/A |
| | Median Sale Price | (No Sales) | (No Sales) | N/A |
| Short Sale | Closed Sales | 0 | 0 | N/A |
| | Median Sale Price | (No Sales) | (No Sales) | N/A |



Produced by Florida REALTORS® with data provided by Florida's multiple listing services. Statistics for each month compiled from MLS feeds on the 15th day of the following month. Data released on Thursday, March 20, 2025. Next data release is Thursday, April 24, 2025.