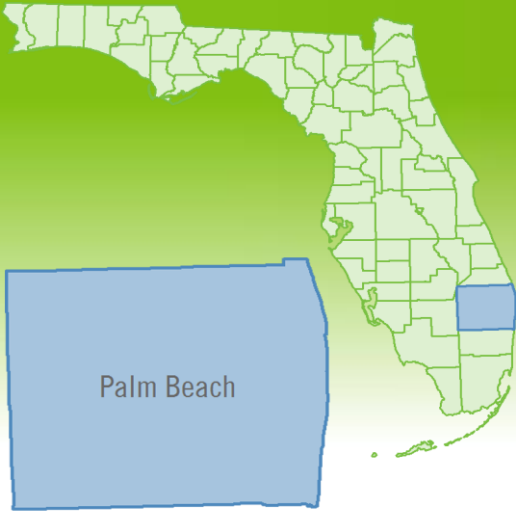


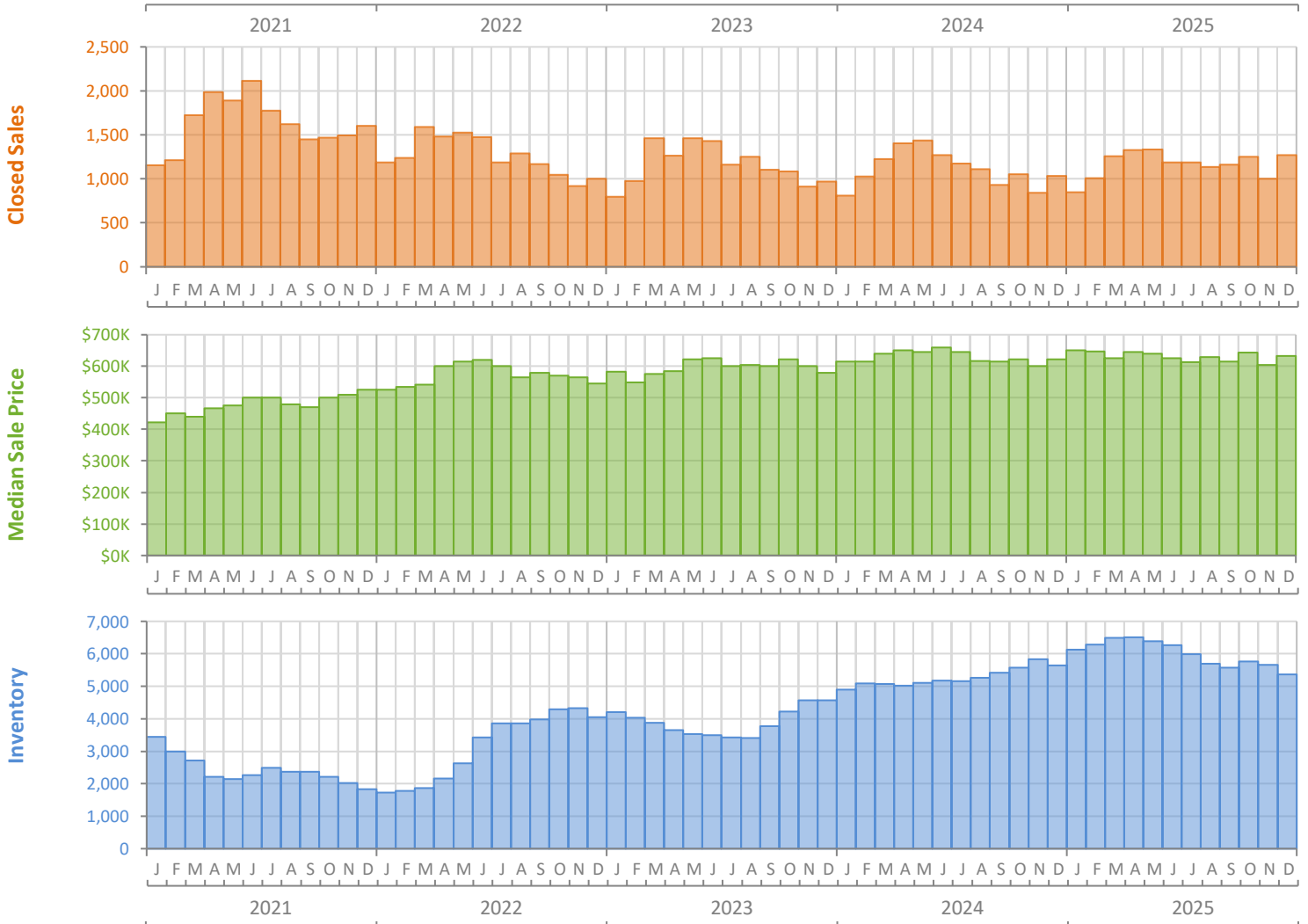
Monthly Market Summary - December 2025

Single-Family Homes

Palm Beach County



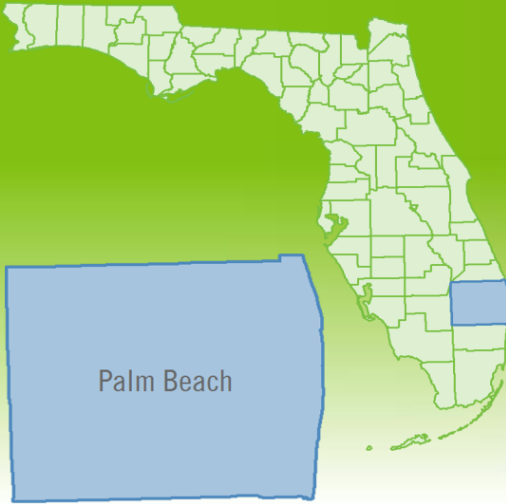
| | December 2025 | December 2024 | Percent Change Year-over-Year |
|--|---------------|---------------|-------------------------------|
| Closed Sales | 1,269 | 1,032 | 23.0% |
| Paid in Cash | 525 | 448 | 17.2% |
| Median Sale Price | \$632,500 | \$622,500 | 1.6% |
| Average Sale Price | \$1,353,599 | \$1,066,261 | 26.9% |
| Dollar Volume | \$1.7 Billion | \$1.1 Billion | 56.1% |
| Med. Pct. of Orig. List Price Received | 94.3% | 94.2% | 0.1% |
| Median Time to Contract | 45 Days | 41 Days | 9.8% |
| Median Time to Sale | 83 Days | 83 Days | 0.0% |
| New Pending Sales | 1,007 | 888 | 13.4% |
| New Listings | 1,283 | 1,295 | -0.9% |
| Pending Inventory | 1,419 | 1,260 | 12.6% |
| Inventory (Active Listings) | 5,370 | 5,637 | -4.7% |
| Months Supply of Inventory | 4.6 | 5.1 | -9.8% |



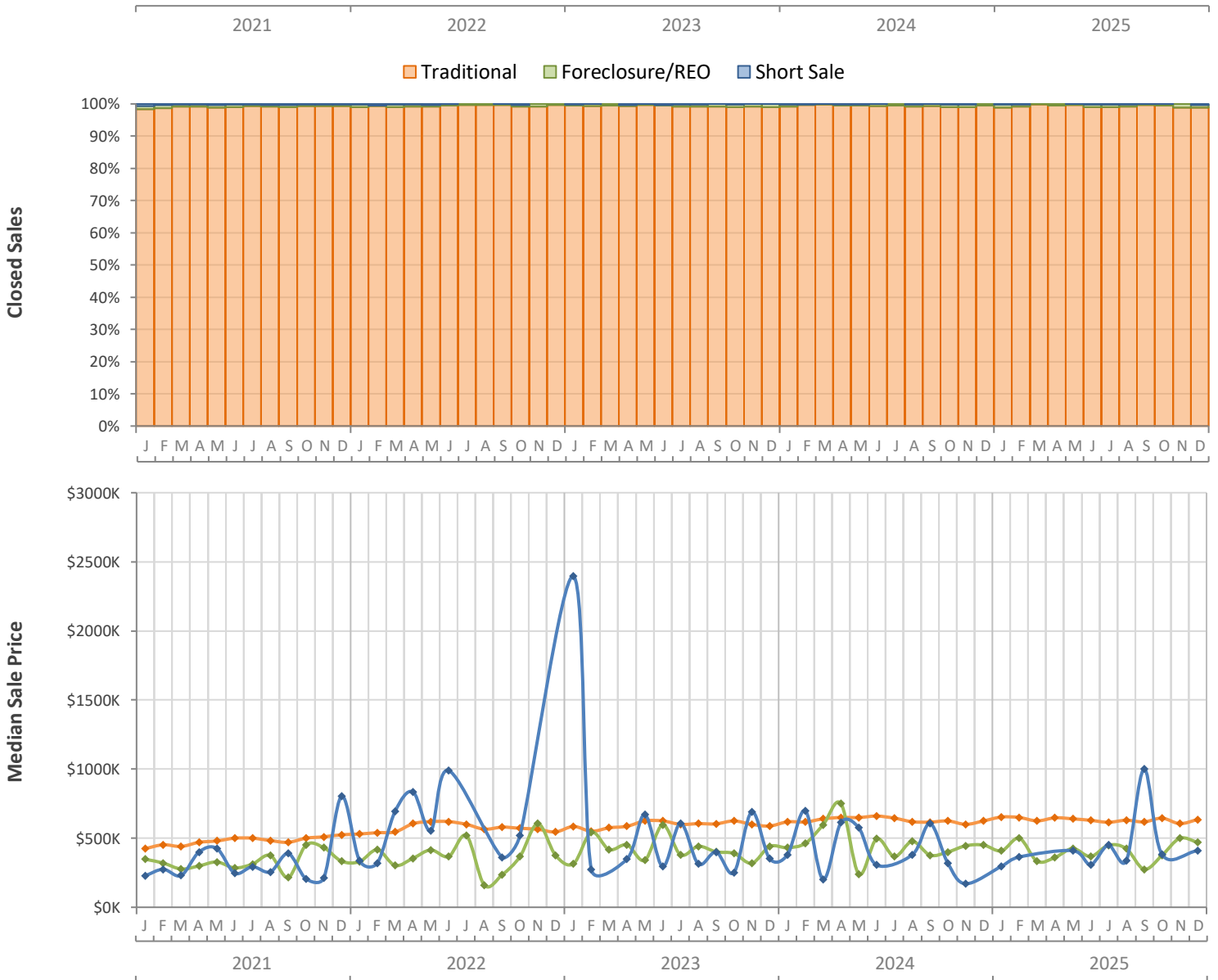
Monthly Distressed Market - December 2025

Single-Family Homes

Palm Beach County



| | | December 2025 | December 2024 | Percent Change Year-over-Year |
|-----------------|-------------------|---------------|---------------|-------------------------------|
| Traditional | Closed Sales | 1,255 | 1,027 | 22.2% |
| | Median Sale Price | \$635,000 | \$625,000 | 1.6% |
| Foreclosure/REO | Closed Sales | 9 | 5 | 80.0% |
| | Median Sale Price | \$470,000 | \$450,000 | 4.4% |
| Short Sale | Closed Sales | 5 | 0 | N/A |
| | Median Sale Price | \$410,000 | (No Sales) | N/A |



Produced by Florida REALTORS® with data provided by Florida's multiple listing services. Statistics for each month compiled from MLS feeds on the 10th day of the following month. Data released on Friday, January 16, 2026. Next data release is Tuesday, February 17, 2026.

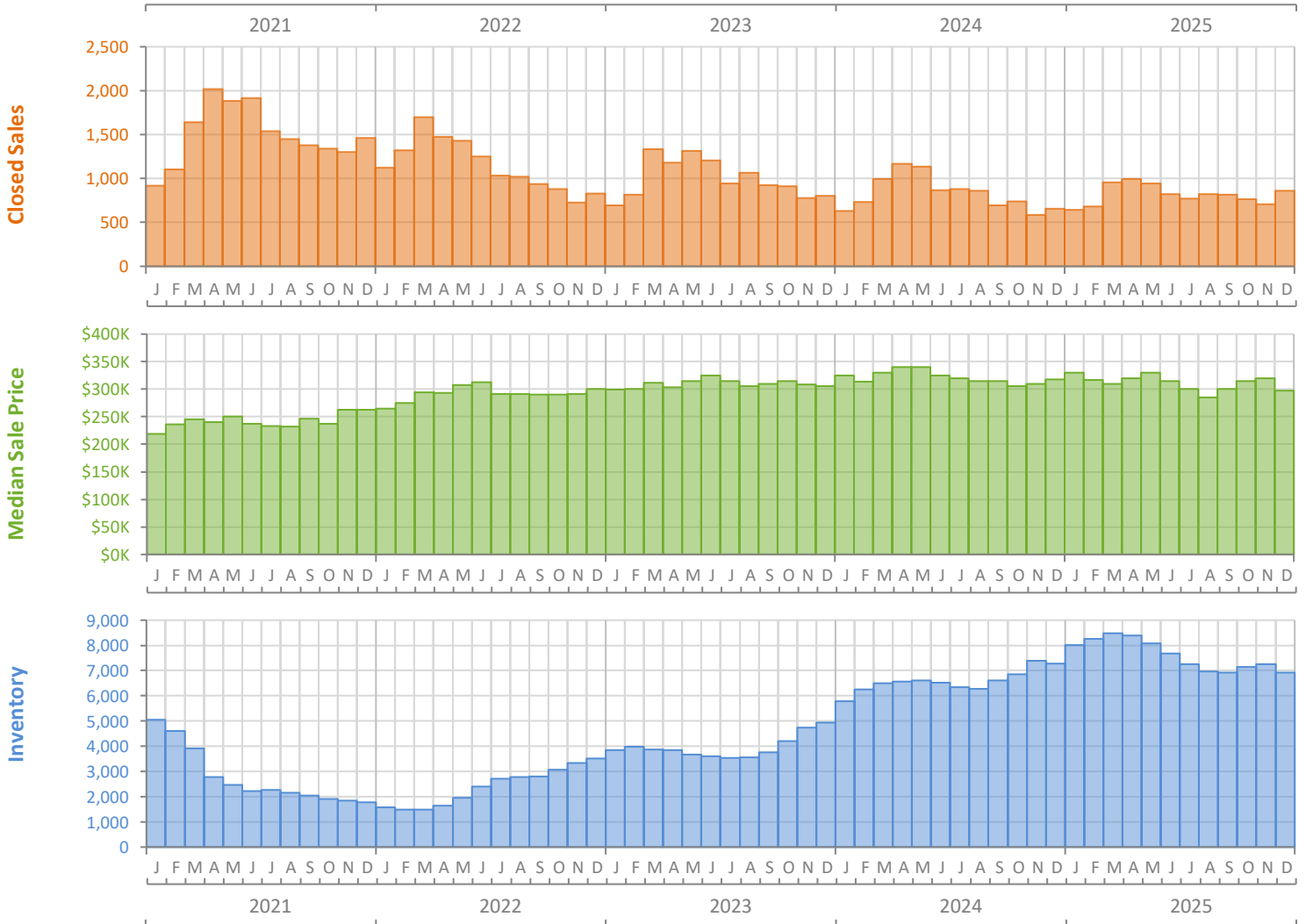
Monthly Market Summary - December 2025

Townhouses and Condos

Palm Beach County



| | December 2025 | December 2024 | Percent Change Year-over-Year |
|--|-----------------|-----------------|-------------------------------|
| Closed Sales | 858 | 654 | 31.2% |
| Paid in Cash | 538 | 387 | 39.0% |
| Median Sale Price | \$297,000 | \$317,500 | -6.5% |
| Average Sale Price | \$491,006 | \$472,486 | 3.9% |
| Dollar Volume | \$421.3 Million | \$309.0 Million | 36.3% |
| Med. Pct. of Orig. List Price Received | 91.4% | 92.5% | -1.2% |
| Median Time to Contract | 63 Days | 55 Days | 14.5% |
| Median Time to Sale | 99 Days | 91 Days | 8.8% |
| New Pending Sales | 734 | 635 | 15.6% |
| New Listings | 1,175 | 1,337 | -12.1% |
| Pending Inventory | 1,137 | 989 | 15.0% |
| Inventory (Active Listings) | 6,925 | 7,287 | -5.0% |
| Months Supply of Inventory | 8.5 | 8.8 | -3.4% |



Monthly Distressed Market - December 2025

Townhouses and Condos

Palm Beach County



| | | December 2025 | December 2024 | Percent Change Year-over-Year |
|-----------------|-------------------|---------------|---------------|-------------------------------|
| Traditional | Closed Sales | 853 | 644 | 32.5% |
| | Median Sale Price | \$299,900 | \$320,000 | -6.3% |
| Foreclosure/REO | Closed Sales | 5 | 8 | -37.5% |
| | Median Sale Price | \$137,000 | \$182,500 | -24.9% |
| Short Sale | Closed Sales | 0 | 2 | -100.0% |
| | Median Sale Price | (No Sales) | \$117,500 | N/A |

