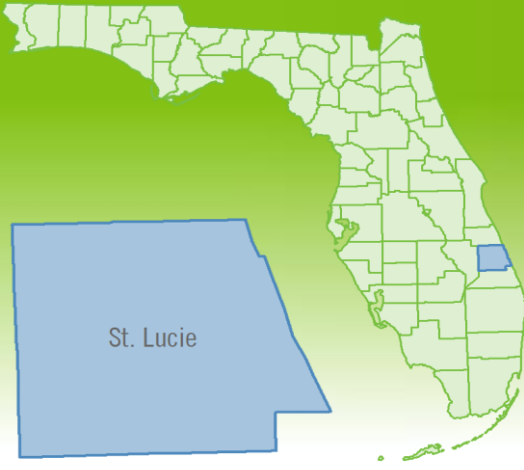


Yearly Market Summary - 2025

Single-Family Homes

St. Lucie County



	2025	2024	Percent Change Year-over-Year
Closed Sales	5,500	5,389	2.1%
Paid in Cash	1,432	1,423	0.6%
Median Sale Price	\$395,000	\$400,000	-1.3%
Average Sale Price	\$436,863	\$434,327	0.6%
Dollar Volume	\$2.4 Billion	\$2.3 Billion	2.7%
Med. Pct. of Orig. List Price Received	95.1%	96.2%	-1.1%
Median Time to Contract	59 Days	48 Days	22.9%
Median Time to Sale	100 Days	92 Days	8.7%
New Pending Sales	5,997	5,935	1.0%
New Listings	7,951	7,973	-0.3%
Pending Inventory	509	500	1.8%
Inventory (Active Listings)	2,284	2,293	-0.4%
Months Supply of Inventory	5.0	5.1	-2.0%

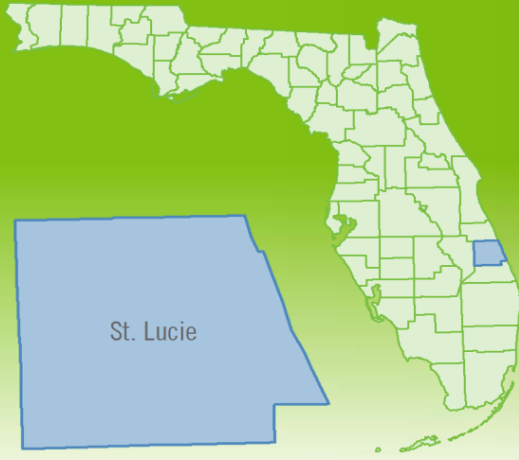


Produced by Florida REALTORS® with data provided by Florida's multiple listing services. Statistics for each month compiled from MLS feeds on the 10th day of the following month. Data released on Friday, January 16, 2026. Next yearly data release is TBD.

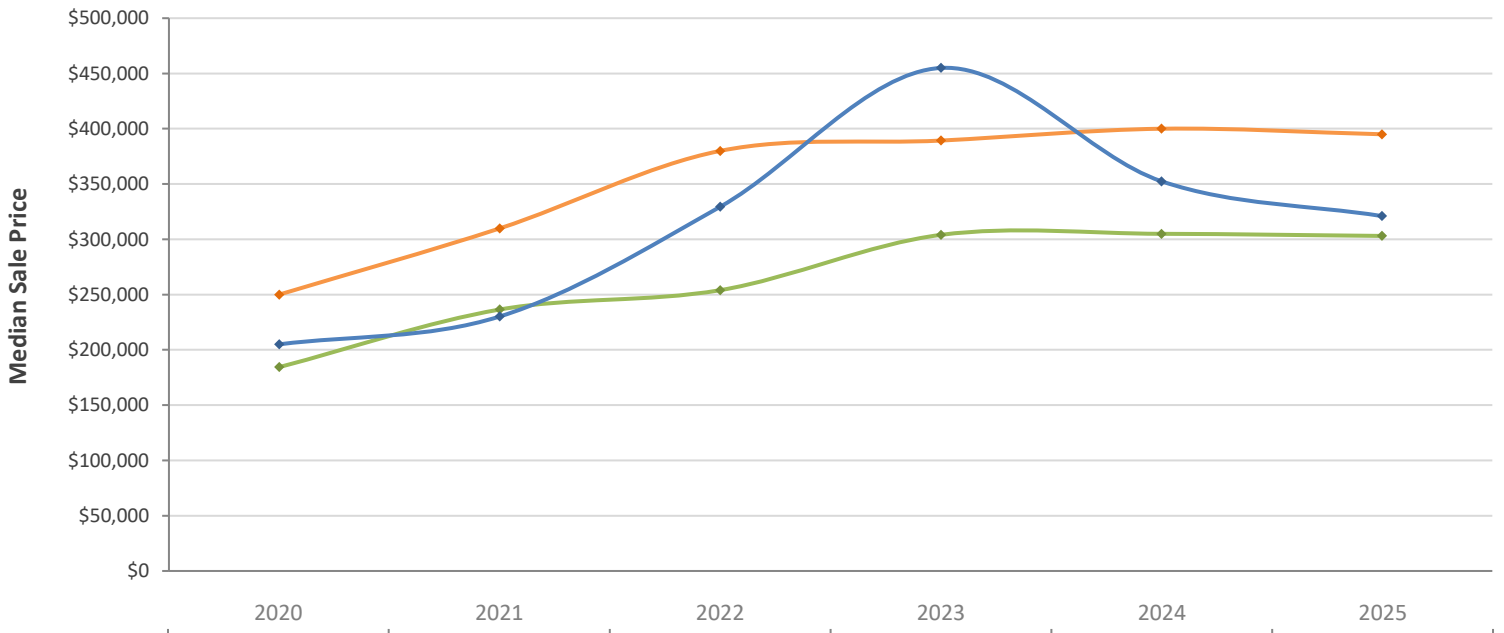
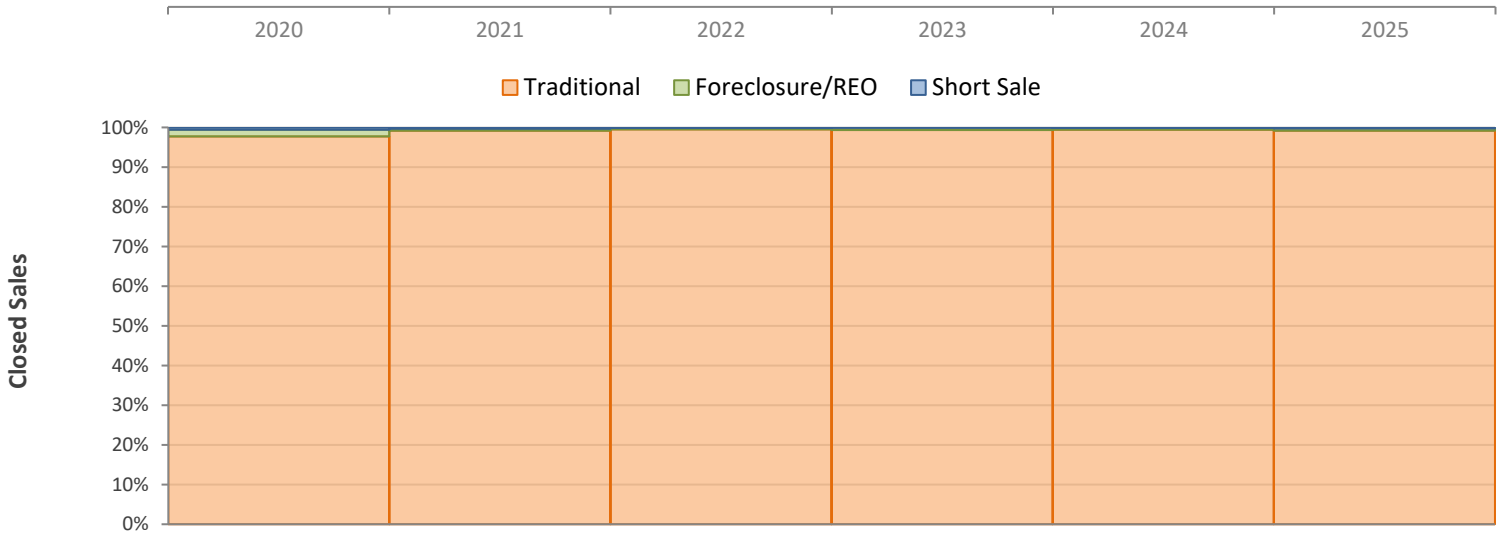
Yearly Distressed Market - 2025

Single-Family Homes

St. Lucie County



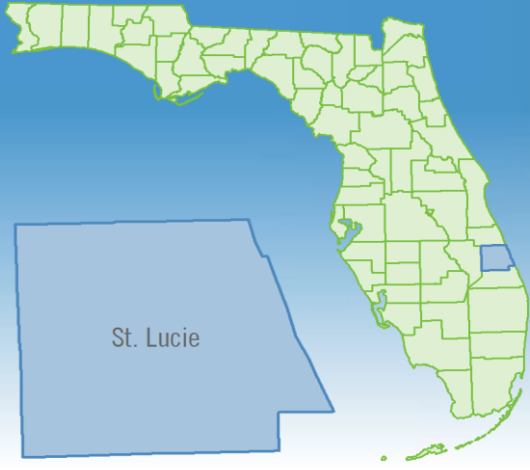
		2025	2024	Percent Change Year-over-Year
Traditional	Closed Sales	5,456	5,357	1.8%
	Median Sale Price	\$395,000	\$400,000	-1.3%
Foreclosure/REO	Closed Sales	32	25	28.0%
	Median Sale Price	\$303,050	\$304,950	-0.6%
Short Sale	Closed Sales	12	7	71.4%
	Median Sale Price	\$320,990	\$352,500	-8.9%



Yearly Market Summary - 2025

Townhouses and Condos

St. Lucie County



	2025	2024	Percent Change Year-over-Year
Closed Sales	942	939	0.3%
Paid in Cash	500	491	1.8%
Median Sale Price	\$305,000	\$309,000	-1.3%
Average Sale Price	\$345,015	\$369,616	-6.7%
Dollar Volume	\$325.0 Million	\$347.1 Million	-6.4%
Med. Pct. of Orig. List Price Received	91.6%	94.2%	-2.8%
Median Time to Contract	90 Days	64 Days	40.6%
Median Time to Sale	126 Days	107 Days	17.8%
New Pending Sales	1,046	1,006	4.0%
New Listings	1,700	1,744	-2.5%
Pending Inventory	79	76	3.9%
Inventory (Active Listings)	718	764	-6.0%
Months Supply of Inventory	9.1	9.8	-7.1%

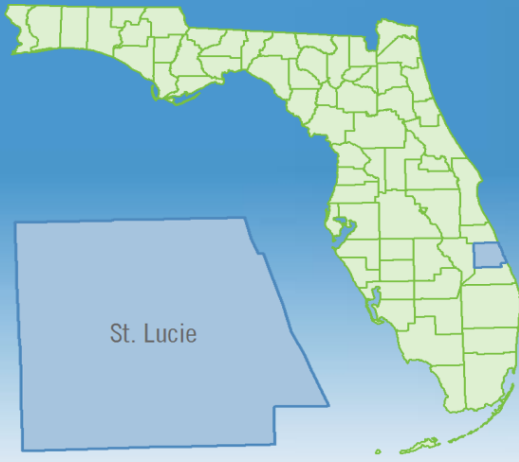


Produced by Florida REALTORS® with data provided by Florida's multiple listing services. Statistics for each month compiled from MLS feeds on the 10th day of the following month. Data released on Friday, January 16, 2026. Next yearly data release is TBD.

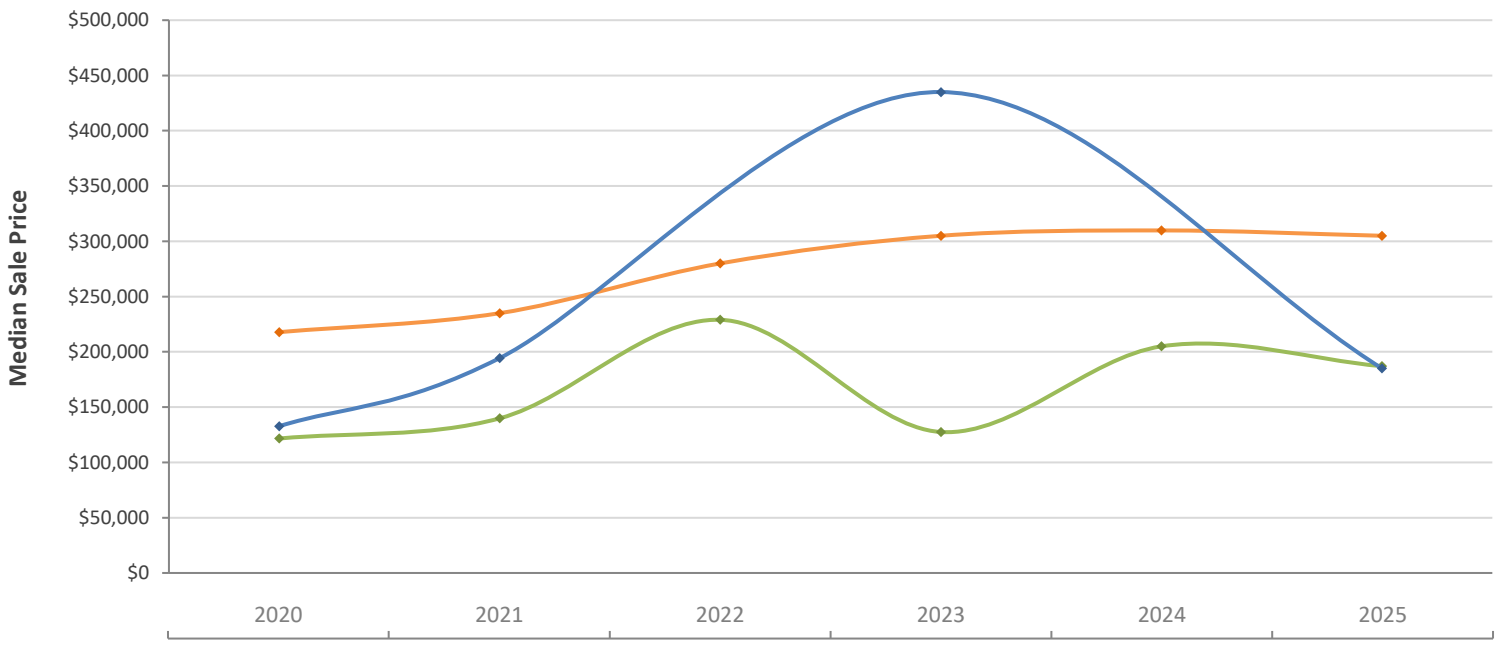
Yearly Distressed Market - 2025

Townhouses and Condos

St. Lucie County



		2025	2024	Percent Change Year-over-Year
Traditional	Closed Sales	936	933	0.3%
	Median Sale Price	\$305,000	\$309,830	-1.6%
Foreclosure/REO	Closed Sales	4	6	-33.3%
	Median Sale Price	\$187,000	\$205,000	-8.8%
Short Sale	Closed Sales	2	0	N/A
	Median Sale Price	\$185,000	(No Sales)	N/A



Produced by Florida REALTORS® with data provided by Florida's multiple listing services. Statistics for each month compiled from MLS feeds on the 10th day of the following month. Data released on Friday, January 16, 2026. Next yearly data release is TBD.